



03/November/2008

IN THIS ISSUE

[HERITAGE TRAIL STATUS](#)

[NEW MEMBERSHIP FORMAT](#)

[2009 TRIATHLON](#)

[CITY COORDINATOR](#)

[DIGGING & PLANTING](#)

[TRAIL GRANT RECEIVED](#)

QUICK LINKS

[CONTACT US](#)

[NEWS](#)

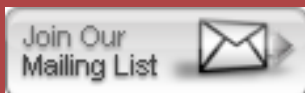
[MORE ON FRIENDS OF THE RIVERFRONT](#)

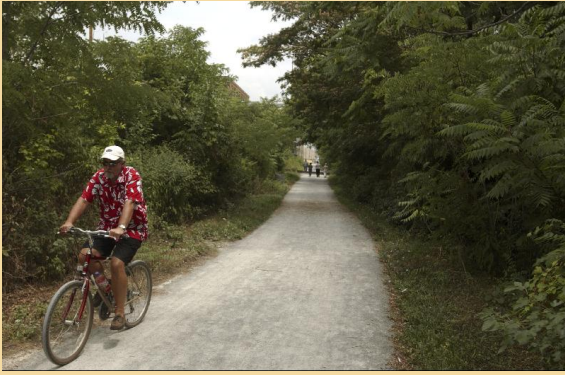
[SUPPORT OUR MISSION](#)

## FRIENDS OF THE RIVERFRONT



Through intense collaboration with community partners, government officials, and a diverse volunteer base, our rivers and riverfronts have been transformed from industrial wastelands to international examples of environmental renewal. Whether you bike, hike, rollerblade, or paddle along our beautiful shores, we encourage everyone to take advantage of these assets.



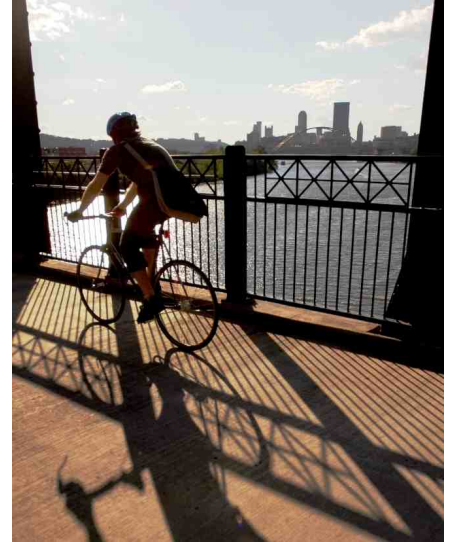


## HERITAGE TRAIL STATUS

The expansion of the Three Rivers Heritage Trail throughout the Pittsburgh region continues to be a top priority for Friends of the Riverfront and our partners. We'd like to keep our members and supporters informed on important developments including new trail construction, temporary closures, improvements and detours. Please click [HERE](#) to visit the Friends of the Riverfront website and see the updates made to keep information flowing.

## NEW MEMBERSHIP FORMAT

Friends of the Riverfront has taken on a new form of recruiting members. After careful deliberation, it has been decided that there will be 3 levels of membership; Friends, Student/Senior, and Family. Beyond these set levels of commitment, all are given the option to contribute towards a number of set projects FOR will be working on. These range from funding new garbage cans on the trail to the 2010 version of the Three Rivers Heritage Trail Map. Click [HERE](#) to check out the new format for yourself and become an active member!

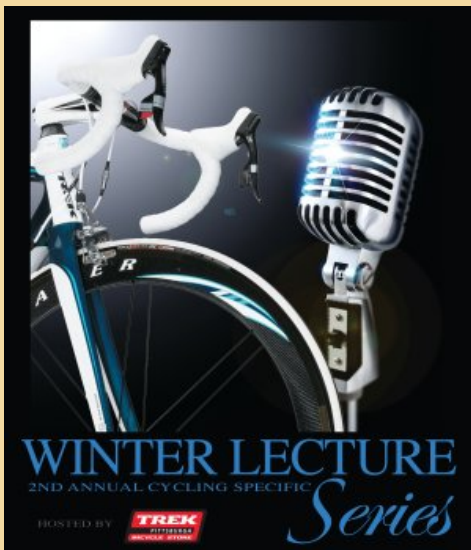
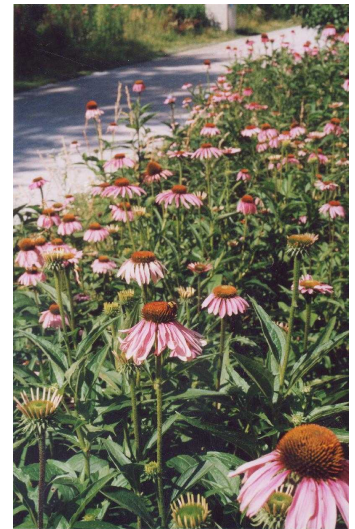


## 2009 PITTSBURGH TRI/SPRINT/ADVENTURE RACE

Save the date for the 2009 Pittsburgh Triathlon and Adventure Race. This year the event will take place on July 25-26, and include a new category - the Sprint! Triathletes and Adventure Racers will find themselves on a very similar course as in past years but will notice some minor changes. Click [HERE](#) to visit the triathlon site to register or volunteer. All details are there!

## GREEN CITY COORDINATOR

Mayor Luke Ravenstahl today announced he has hired the author of the Green Government Task Force's study on how to make city government more environmentally friendly as the city's first "sustainability coordinator." Lindsay A. Baxter, who is working towards a master's degree in environmental science and management from Duquesne University, will be charged with implementing the report she wrote for the task force.



## WINTER LECTURE SERIES

This year marks the 2nd annual Winter Lecture Series, held at the Shadyside Trek store. For those of you who don't know, the Winter Lecture Series is a group of free lectures open to the public to learn more about cycling in the winter months. This year there is a list of lectures, each on a Wednesday night beginning at 7pm, starting November 5th. These lectures can motivate and educate; all with an open forum Q&A afterwards with refreshments. Please click [HERE](#) for more information!

## DIGGING AND PLANTING...TREES

Recently along the South Side Trail, Friends of the Riverfront took part in a large tree-planting in order to help revitalize the riverfronts in Pittsburgh. Native trees such as Red Maple, Pin Oak, Hackberry, Honey Locust, Swamp White Oak & Thorn-less Hawthorn trees were all laid in along a new stretch of trail adjacent to 10th Street. Volunteers were from [NRG Energy Center Pittsburgh](#).

Stay tuned for 2009 volunteer opportunities along the Three Rivers Heritage Trail!





## TRAIL GRANT RECEIVED

Friends of the Riverfront is pleased to be the recipient of a Trail Stewardship Grant from [They-Working](#) fund through the Pittsburgh Foundation. The award will help support volunteer efforts along the Three Rivers Heritage Trail to monitor and remove graffiti on Interpretive Signage and site furniture including park benches and rubbish receptacles. Click [Here](#) for details on the Heritage Trail Monitor Program. As always we'd like to hear from you. Please click [Here](#) to tell us

about an issue or idea you

may have for the Heritage

Trail.

Increase awareness and engagement with the Pittsburgh region's rivers and riverfronts through activities, stewardship and expansion of water and land trails.

Sincerely,  
Friends of the Riverfront

[Forward email](#)

 [SafeUnsubscribe](#)®

This email was sent to thomas@friendsoftheriverfront.org by [friends@friendsoftheriverfront.org](mailto:friends@friendsoftheriverfront.org).

[Update Profile/Email Address](#) | Instant removal with [SafeUnsubscribe](#)™ | [Privacy Policy](#).

Email Marketing by



Friends of the Riverfront | 33 Terminal Way | Pittsburgh | PA | 15219