

BIKE TRAIL B CURVE DATA
 PI STA 1+97.49
 $\Delta = 13^\circ 25' 20'' \text{RT}$
 $D = 57^\circ 17' 45''$
 $T = 11.77'$
 $L = 23.43'$
 $R = 100.00'$
 $E = 0.69'$
 PC STA 1+85.72
 PT STA 2+09.15

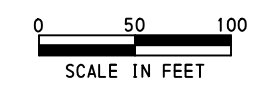
BIKE TRAIL B CURVE DATA
 PI STA 3+15.02
 $\Delta = 15^\circ 51' 50'' \text{LT}$
 $D = 11^\circ 27' 33''$
 $T = 69.67'$
 $L = 138.44'$
 $R = 500.00'$
 $E = 4.83'$
 PC STA 2+45.36
 PT STA 3+83.80

BIKE TRAIL B CURVE DATA
 PI STA 8+06.93
 $\Delta = 5^\circ 35' 42'' \text{LT}$
 $D = 4^\circ 46' 29''$
 $T = 58.64'$
 $L = 117.18'$
 $R = 1200.00'$
 $E = 1.43'$
 PC STA 7+48.29
 PT STA 8+65.47

BIKE TRAIL B CURVE DATA
 PI STA 10+07.35
 $\Delta = 4^\circ 14' 43'' \text{LT}$
 $D = 7^\circ 09' 43''$
 $T = 29.65'$
 $L = 59.28'$
 $R = 800.00'$
 $E = 0.55'$
 PC STA 9+77.70
 PT STA 10+36.97



**ALMONO BIKE TRAIL
 PLAN**



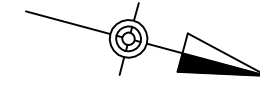
DATE: 7-27-11

LEGEND

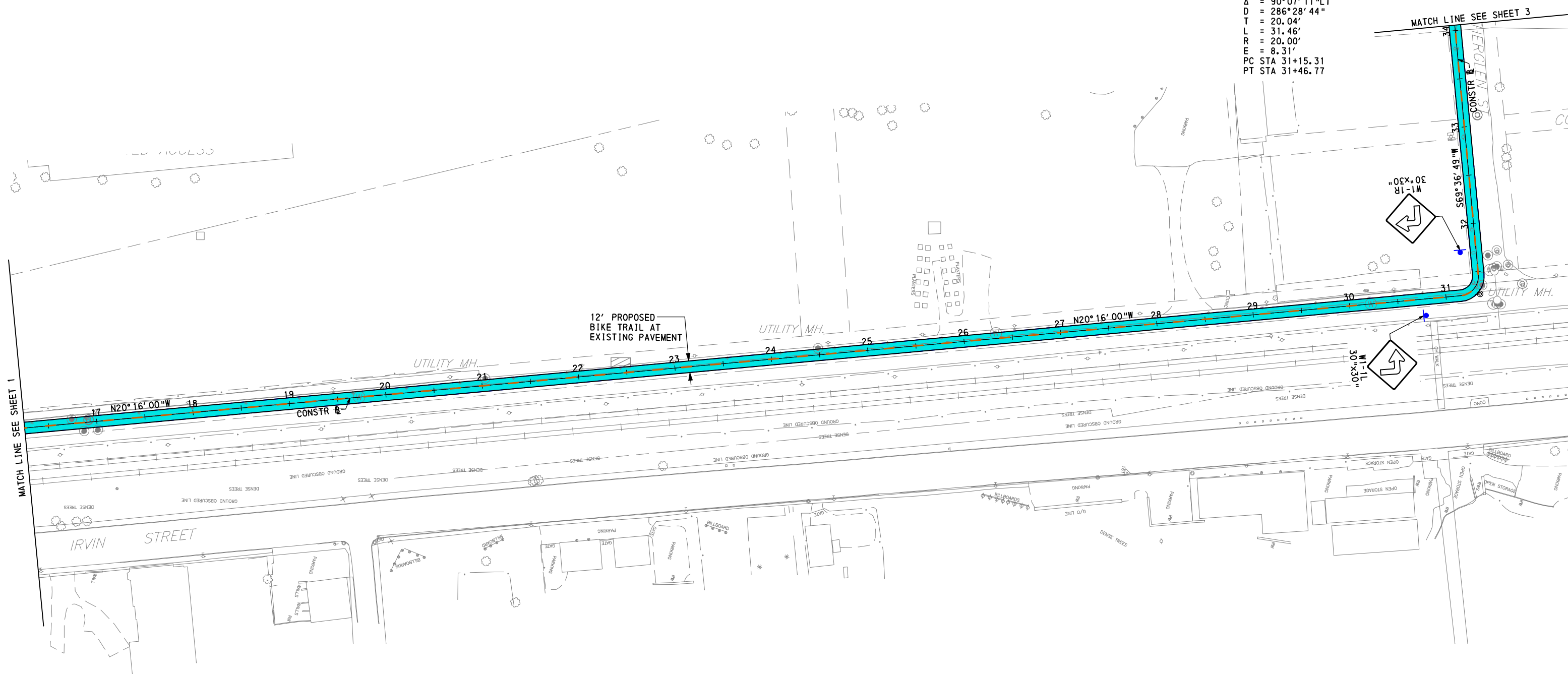
- PROPOSED AGGREGATE BIKE TRAIL
 (STA 1+76.32 TO STA 1+88.89, STA 37+19.22 TO STA 86+63.38)
- PROPOSED BIKE TRAIL AT EXISTING PAVEMENT
 (STA 0+29.06 TO STA 1+76.32, STA 1+88.89 TO STA 37+19.22)
- PROPOSED BIKE TRAIL PARKING AREA
 (STA 0+29.06 TO STA 1+29.06)
- PROPOSED FENCE

SEE SHEET 6

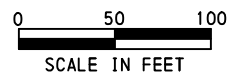
MATCH LINE SEE SHEET 2



BIKE TRAIL B CURVE DATA
 PI STA 31+35.35
 $\Delta = 90^{\circ}07'11''$ LT
 $D = 286^{\circ}28'44''$
 $T = 20.04'$
 $L = 31.46'$
 $R = 20.00'$
 $E = 8.31'$
 PC STA 31+15.31
 PT STA 31+46.77



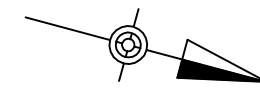
**ALMONO BIKE TRAIL
 PLAN**



DATE: 7-27-11

LEGEND

- PROPOSED AGGREGATE BIKE TRAIL
 (STA 1+76.32 TO STA 1+88.89, STA 37+19.22 TO STA 86+63.38)
- PROPOSED BIKE TRAIL AT EXISTING PAVEMENT
 (STA 0+29.06 TO STA 1+76.32, STA 1+88.89 TO STA 37+19.22)
- PROPOSED BIKE TRAIL PARKING AREA
 (STA 0+29.06 TO STA 1+29.06)
- PROPOSED FENCE



BIKE TRAIL & CURVE DATA

PI STA	37+11.18
Δ	= 82°09'24"RT
D	= 57°17'45"
T	= 87.17'
L	= 143.39'
R	= 100.00'
E	= 32.66'
PC STA	36+24.01
PT STA	37+67.40

BIKE TRAIL & CURVE DATA

PI STA	40+11.87
Δ	= 10°01'49"RT
D	= 11°27'33"
T	= 43.88'
L	= 87.53'
R	= 500.00'
E	= 1.92'
PC STA	39+67.99
PT STA	40+55.52

BIKE TRAIL & CURVE DATA

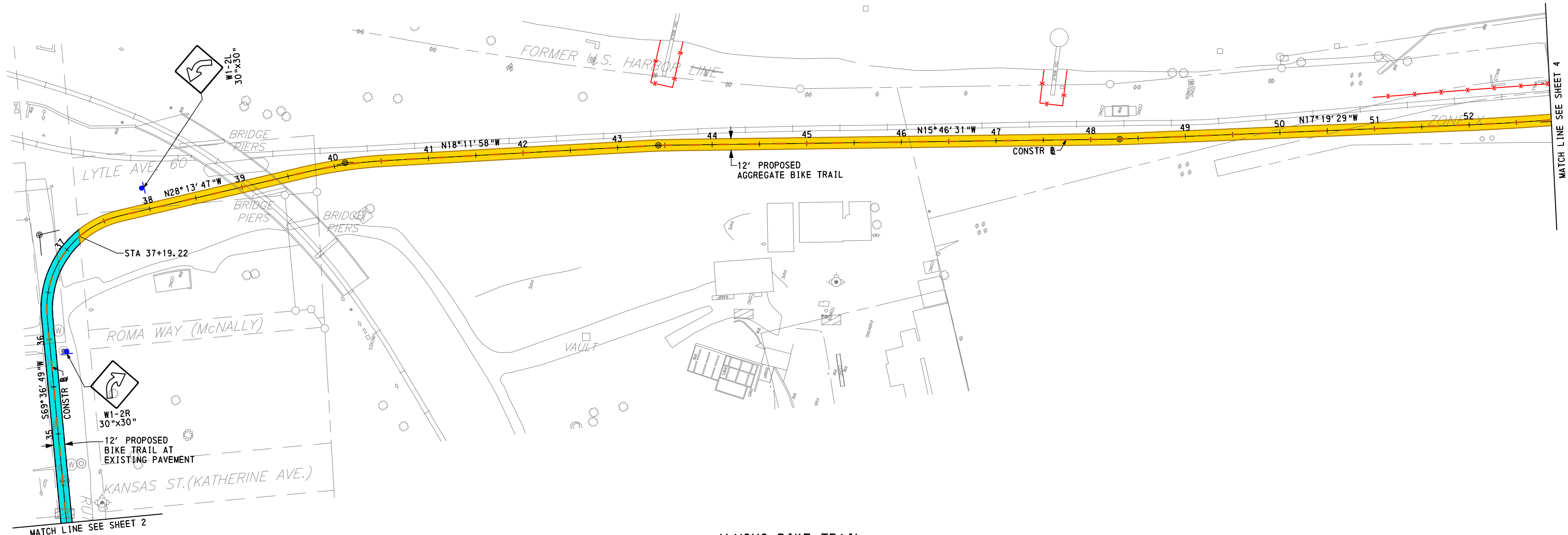
PI STA	43+43.16
Δ	= 2°25'27"RT
D	= 9°32'57"
T	= 12.69'
L	= 25.39'
R	= 600.00'
E	= 0.13'
PC STA	43+30.46
PT STA	43+55.85

BIKE TRAIL & CURVE DATA

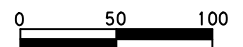
PI STA	48+30.53
Δ	= 1°32'58"LT
D	= 4°46'29"
T	= 16.23'
L	= 32.45'
R	= 1200.00'
E	= 0.11'
PC STA	48+14.31
PT STA	48+46.76

BIKE TRAIL & CURVE DATA

PI STA	52+99.95
Δ	= 4°52'25"LT
D	= 2°17'31"
T	= 106.39'
L	= 212.65'
R	= 2500.00'
E	= 2.26'
PC STA	51+93.57
PT STA	54+06.21



**ALMONO BIKE TRAIL
PLAN**



SCALE IN FEET

DATE: 7-27-11

LEGEND

- PROPOSED AGGREGATE BIKE TRAIL
(STA 1+76.32 TO STA 1+88.89, STA 37+19.22 TO STA 86+63.38)
- PROPOSED BIKE TRAIL AT EXISTING PAVEMENT
(STA 0+29.06 TO STA 1+76.32, STA 1+88.89 TO STA 37+19.22)
- PROPOSED BIKE TRAIL PARKING AREA
(STA 0+29.06 TO STA 1+29.06)
- PROPOSED FENCE

BIKE TRAIL CURVE DATA

PI STA 52+99.95
Δ = 4°52'25"LT
D = 2°17'31"
T = 106.39'
L = 212.65'
R = 2500.00'
E = 2.26'
PC STA 51+93.57
PT STA 54+06.21

BIKE TRAIL CURVE DATA

PI STA 57+33.93
Δ = 7°49'26"LT
D = 4°46'29"
T = 82.06'
L = 163.86'
R = 1200.00'
E = 2.80'
PC STA 56+51.87
PT STA 58+15.74

BIKE TRAIL CURVE DATA

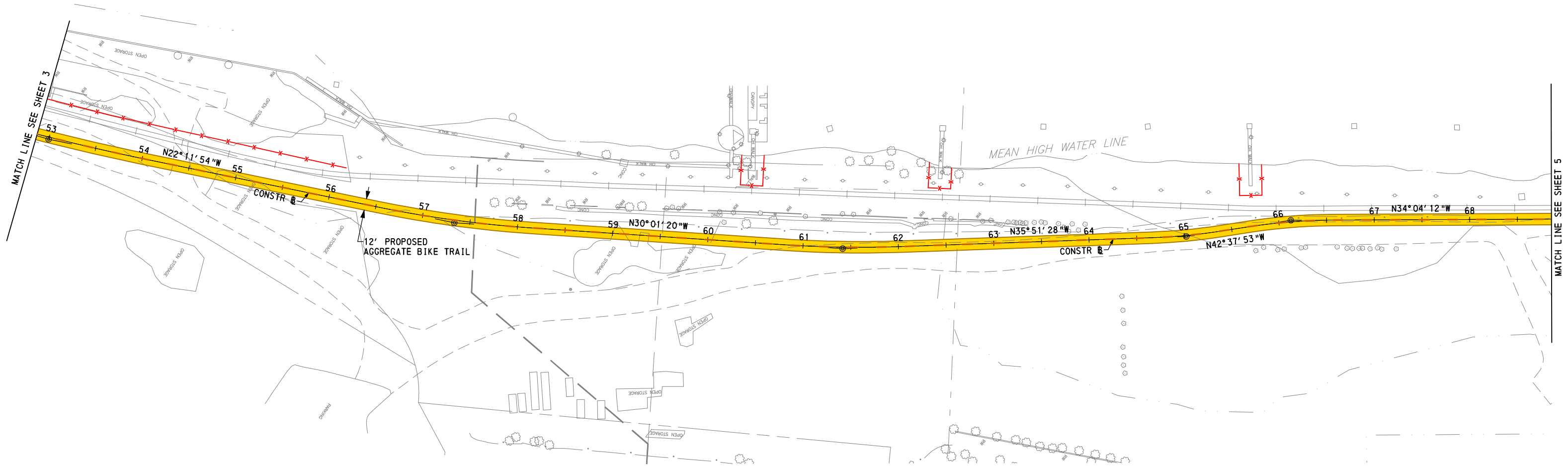
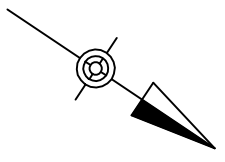
PI STA 61+41.64
Δ = 5°50'09"LT
D = 4°46'29"
T = 61.16'
L = 122.22'
R = 1200.00'
E = 1.56'
PC STA 60+80.48
PT STA 62+02.70

BIKE TRAIL CURVE DATA

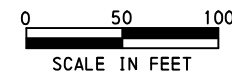
PI STA 65+01.86
Δ = 6°46'25"LT
D = 9°32'57"
T = 35.51'
L = 70.93'
R = 600.00'
E = 1.05'
PC STA 64+66.35
PT STA 65+37.28

BIKE TRAIL CURVE DATA

PI STA 66+12.69
Δ = 8°33'41"RT
D = 9°32'57"
T = 44.91'
L = 89.65'
R = 600.00'
E = 1.68'
PC STA 65+67.78
PT STA 66+57.43


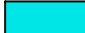




**ALMONO BIKE TRAIL
PLAN**



DATE: 7-27-11

LEGEND

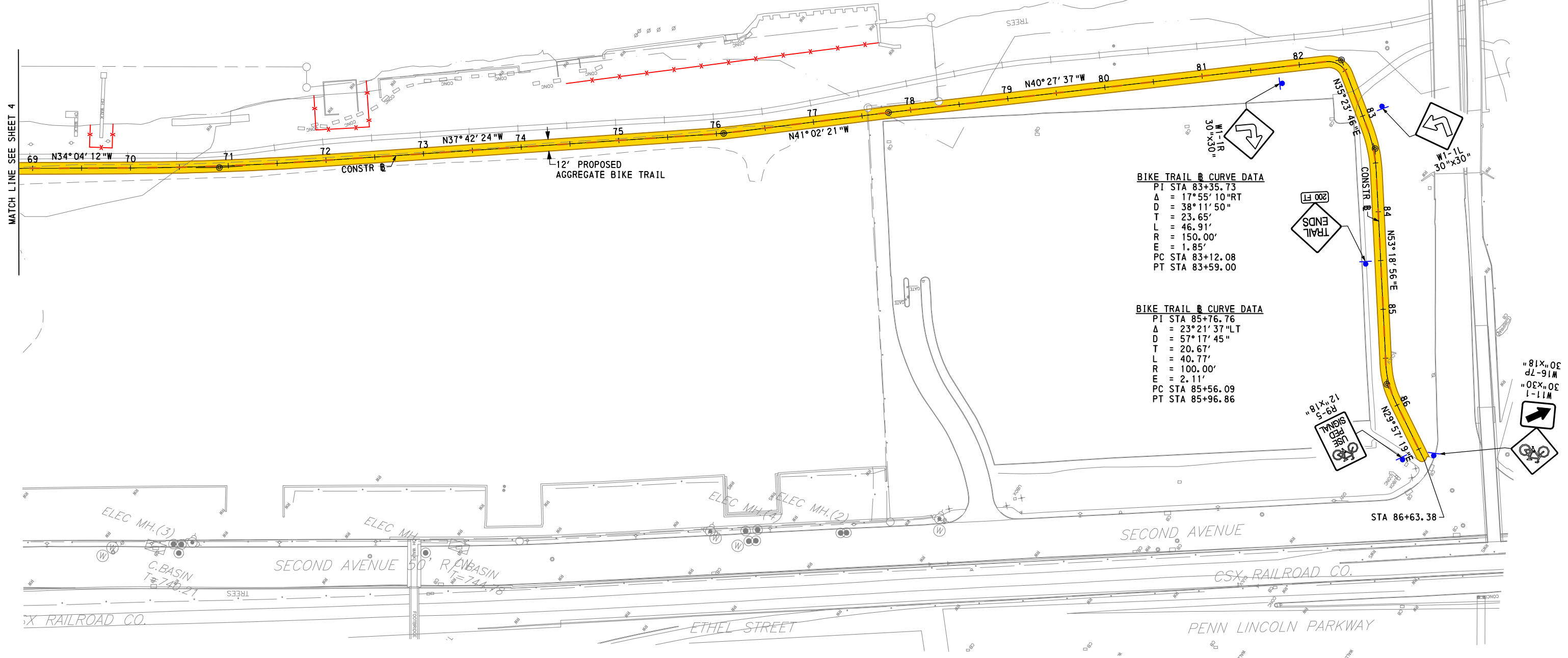
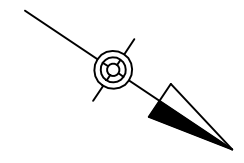
-  PROPOSED AGGREGATE BIKE TRAIL
(STA 1+76.32 TO STA 1+88.89, STA 37+19.22 TO STA 86+63.38)
-  PROPOSED BIKE TRAIL AT EXISTING PAVEMENT
(STA 0+29.06 TO STA 1+76.32, STA 1+88.89 TO STA 37+19.22)
-  PROPOSED BIKE TRAIL PARKING AREA
(STA 0+29.06 TO STA 1+29.06)
-  PROPOSED FENCE

BIKE TRAIL B CURVE DATA
 PI STA 70+90.80
 $\Delta = 3^{\circ}38'12''$ LT
 $D = 1^{\circ}54'35''$
 $T = 95.24'$
 $L = 190.41'$
 $R = 3000.00'$
 $E = 1.51'$
 PC STA 69+95.57
 PT STA 71+85.98

BIKE TRAIL B CURVE DATA
 PI STA 76+07.47
 $\Delta = 3^{\circ}19'57''$ LT
 $D = 7^{\circ}09'43''$
 $T = 23.27'$
 $L = 46.53'$
 $R = 800.00'$
 $E = 0.34'$
 PC STA 75+84.20
 PT STA 76+30.73

BIKE TRAIL B CURVE DATA
 PI STA 77+77.27
 $\Delta = 0^{\circ}34'45''$ RT
 $D = 4^{\circ}46'29''$
 $T = 6.06'$
 $L = 12.13'$
 $R = 1200.00'$
 $E = 0.02'$
 PC STA 77+71.20
 PT STA 77+83.33

BIKE TRAIL B CURVE DATA
 PI STA 82+43.38
 $\Delta = 75^{\circ}51'22''$ RT
 $D = 286^{\circ}28'44''$
 $T = 15.59'$
 $L = 26.48'$
 $R = 20.00'$
 $E = 5.36'$
 PC STA 82+27.79
 PT STA 82+54.27

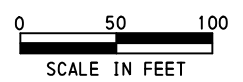


BIKE TRAIL B CURVE DATA
 PI STA 83+35.73
 $\Delta = 17^{\circ}55'10''$ RT
 $D = 38^{\circ}11'50''$
 $T = 23.65'$
 $L = 46.91'$
 $R = 150.00'$
 $E = 1.85'$
 PC STA 83+12.08
 PT STA 83+59.00

BIKE TRAIL B CURVE DATA
 PI STA 85+76.76
 $\Delta = 23^{\circ}21'37''$ LT
 $D = 57^{\circ}17'45''$
 $T = 20.67'$
 $L = 40.77'$
 $R = 100.00'$
 $E = 2.11'$
 PC STA 85+56.09
 PT STA 85+96.86

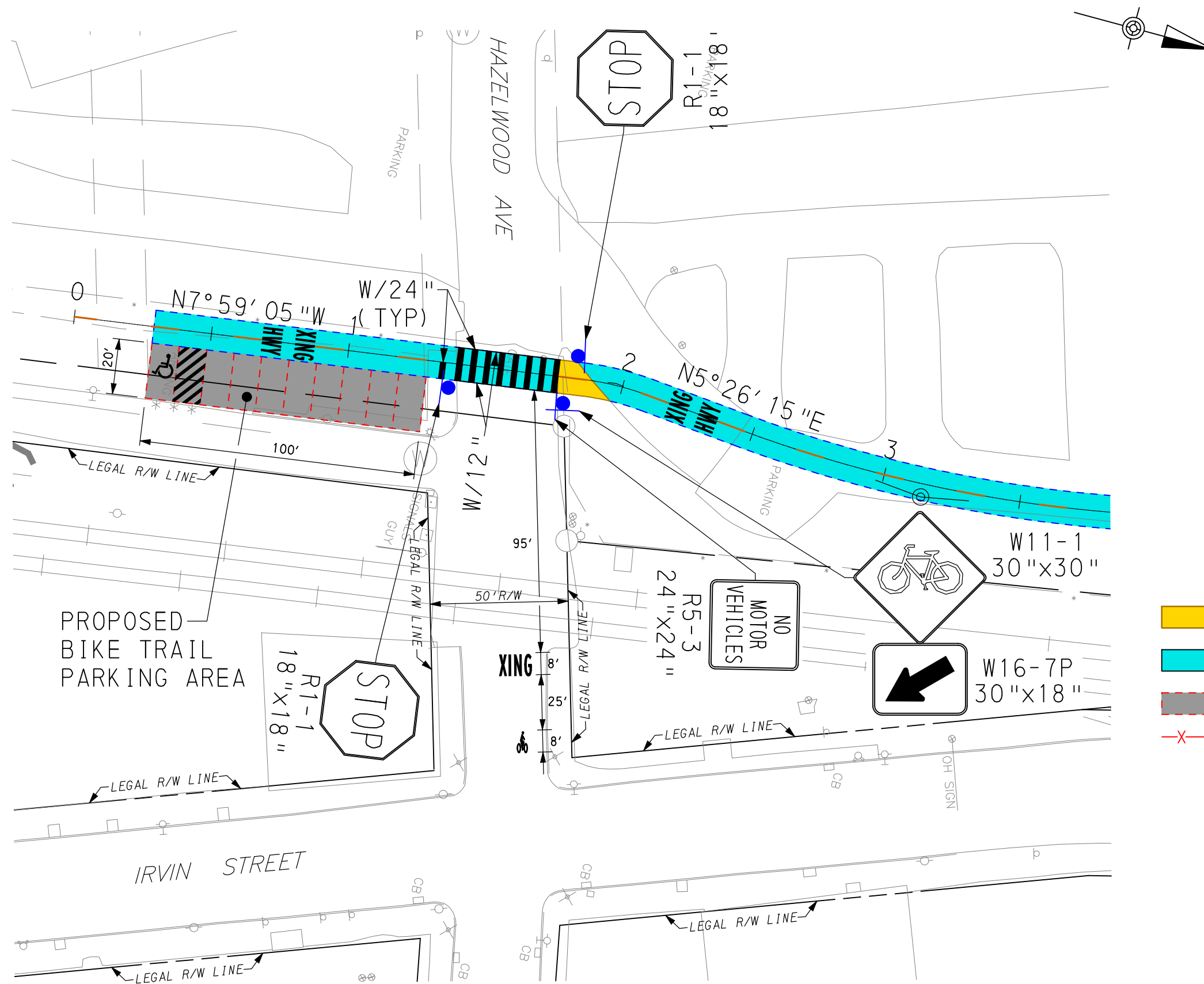
- LEGEND**
- PROPOSED AGGREGATE BIKE TRAIL
(STA 1+76.32 TO STA 1+88.89, STA 37+19.22 TO STA 86+63.38)
 - PROPOSED BIKE TRAIL AT EXISTING PAVEMENT
(STA 0+29.06 TO STA 1+76.32, STA 1+88.89 TO STA 37+19.22)
 - PROPOSED BIKE TRAIL PARKING AREA
(STA 0+29.06 TO STA 1+29.06)
 - PROPOSED FENCE

ALMONO BIKE TRAIL PLAN



DATE: 7-27-11

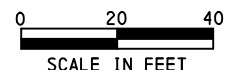
NOTE:
 PLACE ONE R9-5 ON EACH SIDE OF PEDESTRIAN CROSS WALK ON HOT METAL STREET.



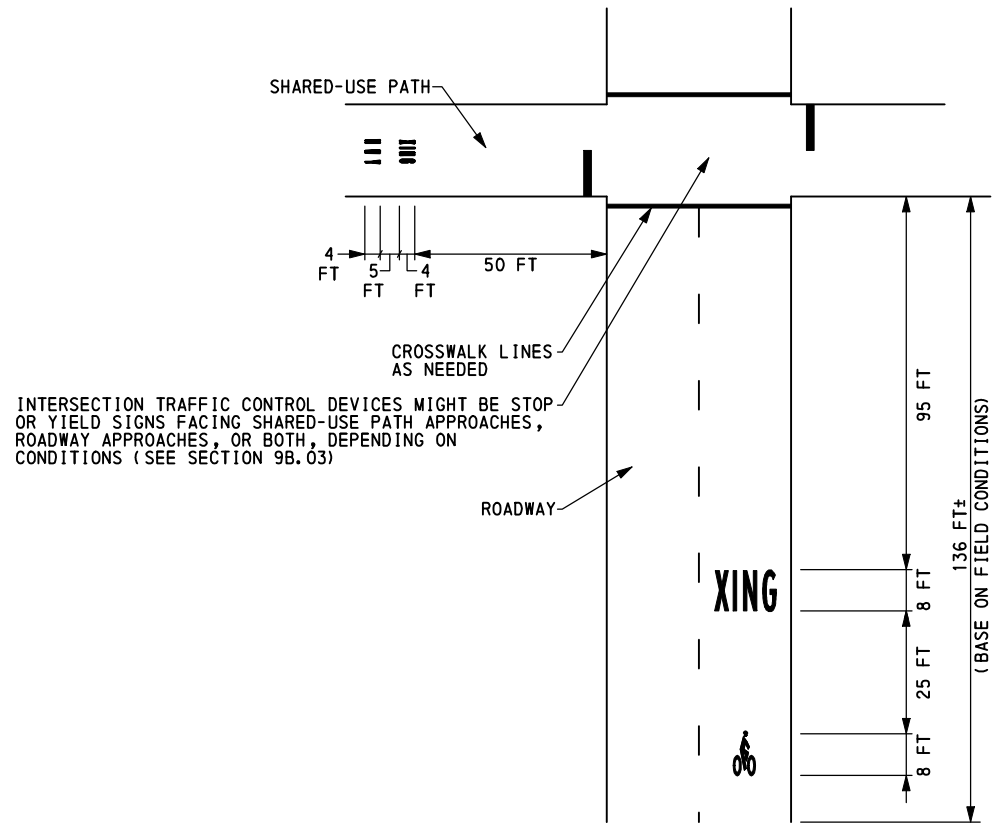
LEGEND

- PROPOSED AGGREGATE BIKE TRAIL
(STA 1+76.32 TO STA 1+88.89, STA 37+19.22 TO STA 86+63.38)
- PROPOSED BIKE TRAIL AT EXISTING PAVEMENT
(STA 0+29.06 TO STA 1+76.32, STA 1+88.89 TO STA 37+19.22)
- PROPOSED BIKE TRAIL PARKING AREA
(STA 0+29.06 TO STA 1+29.06)
- PROPOSED FENCE

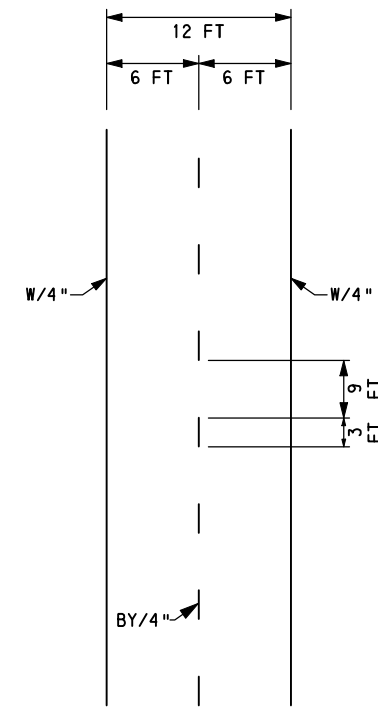
**ALMONO BIKE TRAIL
PLAN**



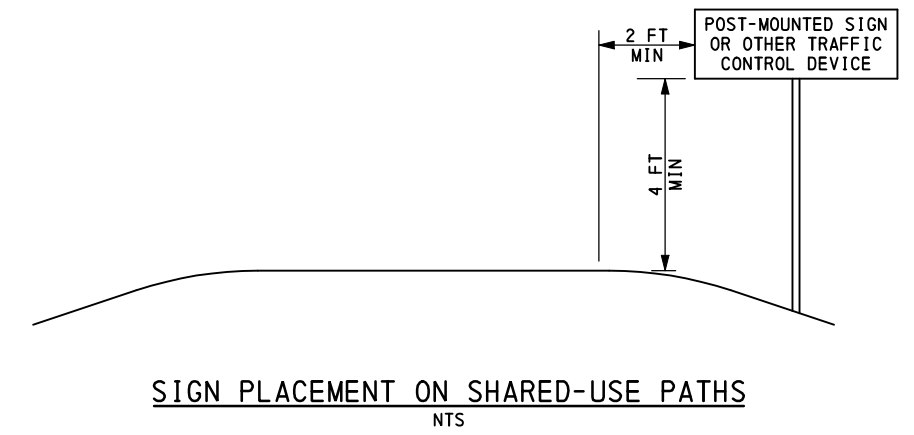
DATE: 7-27-11



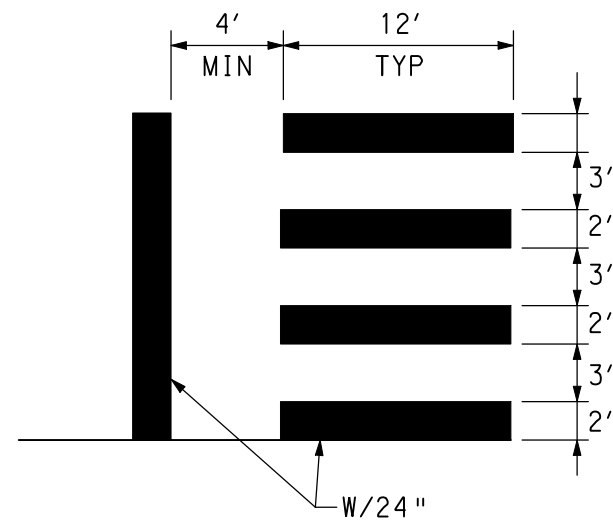
SIGNING AND MARKINGS FOR A SHARED-USE PATH CROSSING
NTS



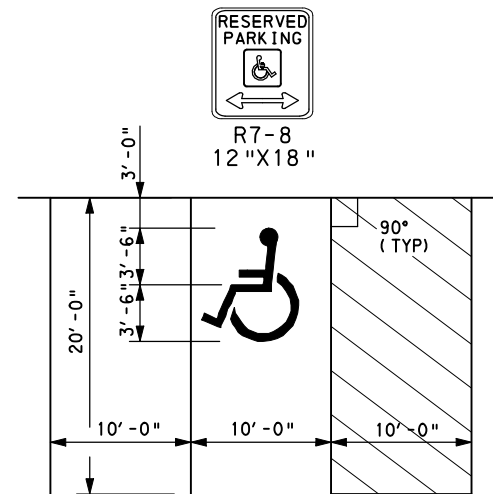
CENTER LINE MARKINGS FOR SHARED-USE PATHS
NTS



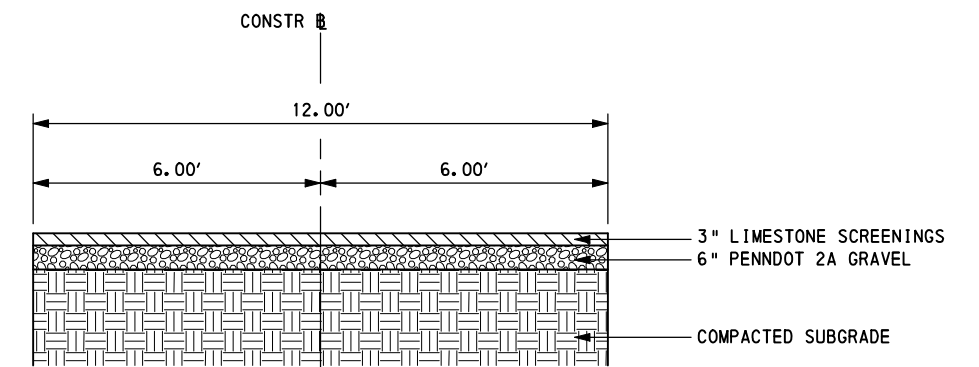
SIGN PLACEMENT ON SHARED-USE PATHS
NTS



PEDESTRIAN CROSS MARKING
NTS



HANDICAP STALL
NTS



TYPICAL BIKE PATH SECTION FROM STA 0+29.06 TO STA 1+76.32, STA 1+88.89 TO STA 37+19.22
NTS

NOTE:
PROFILE BIKE PATH SECTION DURING CONSTRUCTION,
TO ENSURE POSITIVE DRAINAGE.