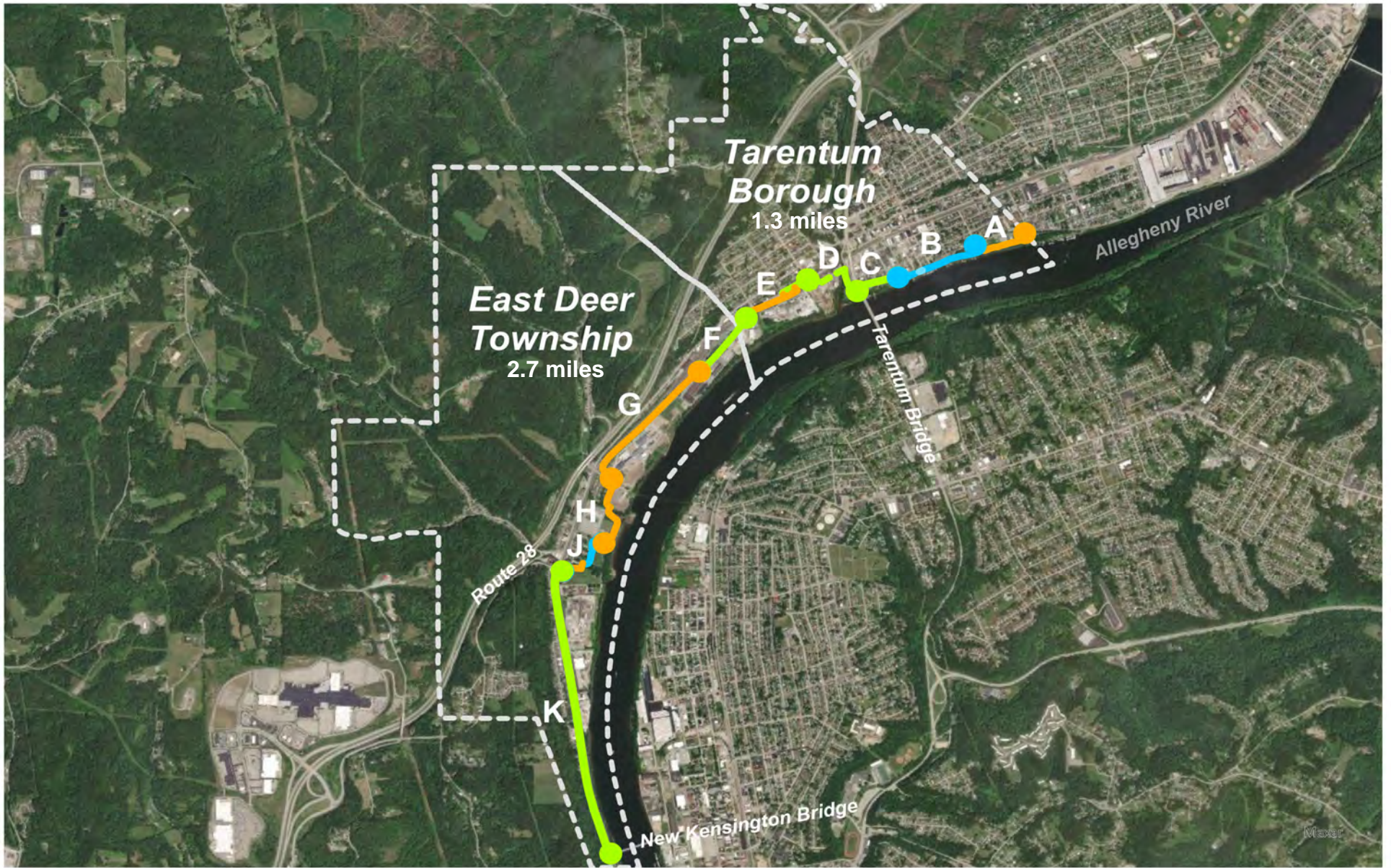


Tarentum-East Deer Three Rivers Heritage Trail

Public Meeting | April 25, 2023



- Existing path, improved
- - Existing path, improved; suggested dismount area
- New 8-10 ft wide paved trail
- On-road sharrows
- - On-road cycletrack
- Municipal boundary



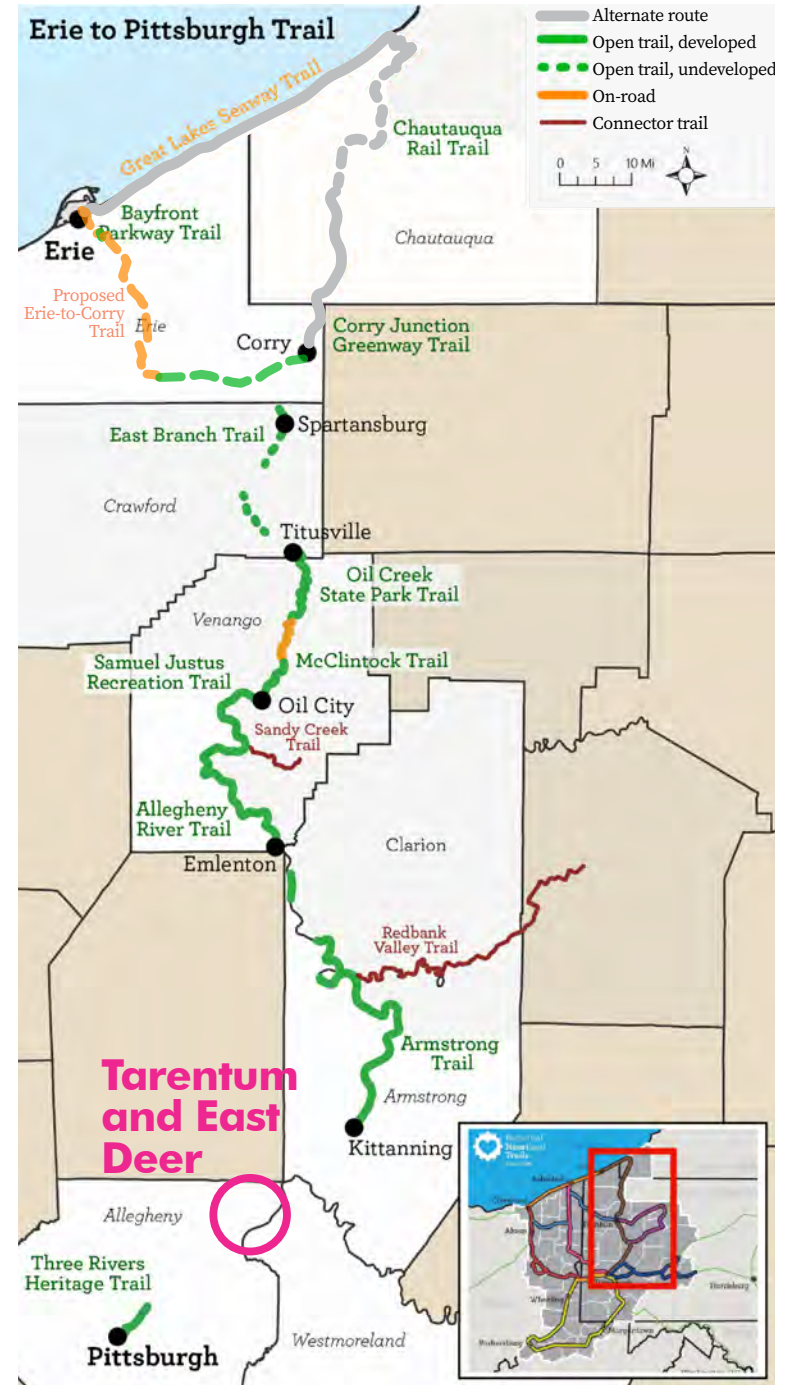
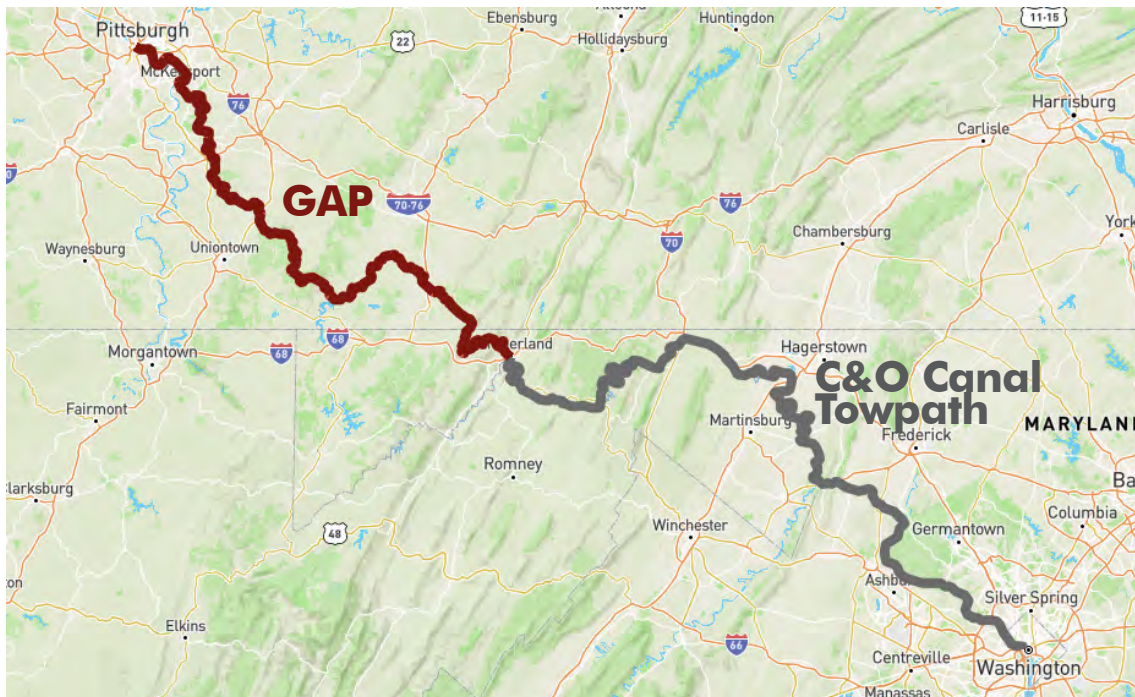
Regional Trails

Erie to Pittsburgh Trail

- Estimated length once complete is 270 miles
- Approximately 66% complete
- Connects Point State Park in Pittsburgh to the Bayfront at Centennial Town in Erie

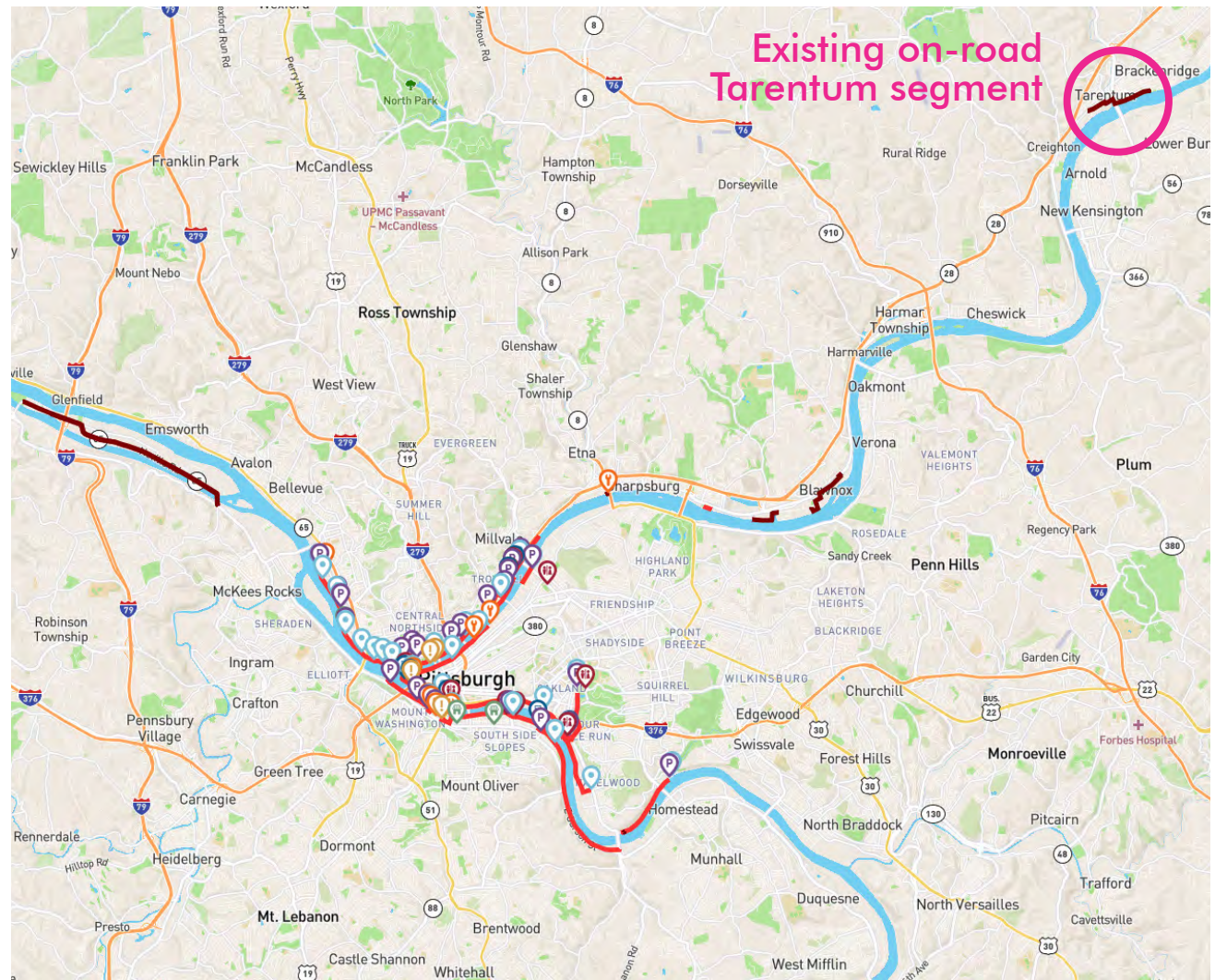
Great Allegheny Passage (GAP) and C&O Canal Towpath

- GAP 150 miles from Pittsburgh, PA to Cumberland, MD
- C&O Canal Towpath 185 miles from Cumberland, MD to Washington, D.C.



Three Rivers Heritage Trail

- Approximately 33 miles, nonlinear
- Connects to local attractions, business districts in river towns, and some regional trails



Tarentum Borough



Tarentum Borough



Tarentum Riverview Memorial Park



PAFBC Boat Launch

East Deer Township



Pittsburgh Brewing Company

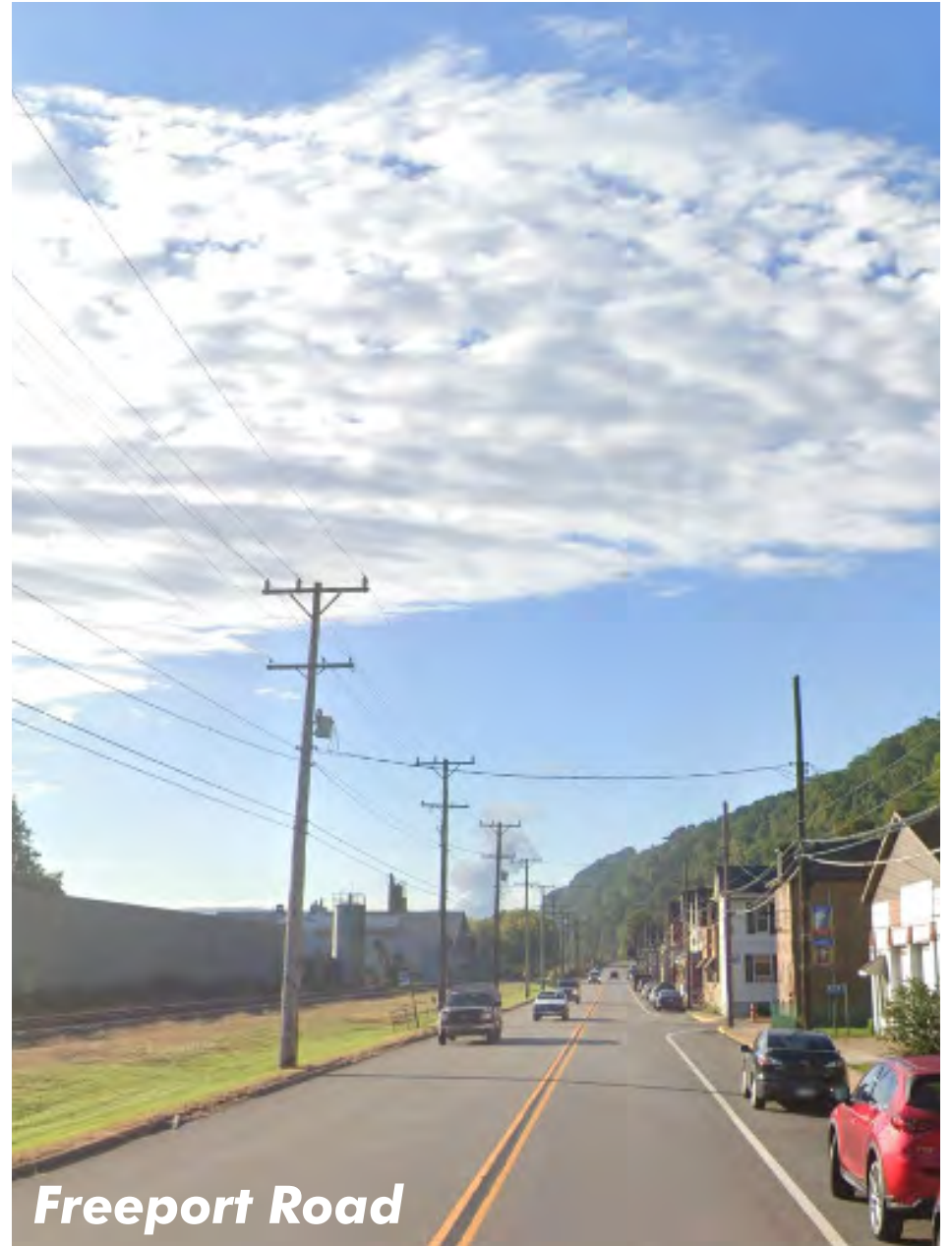


Bailey Run

East Deer Township

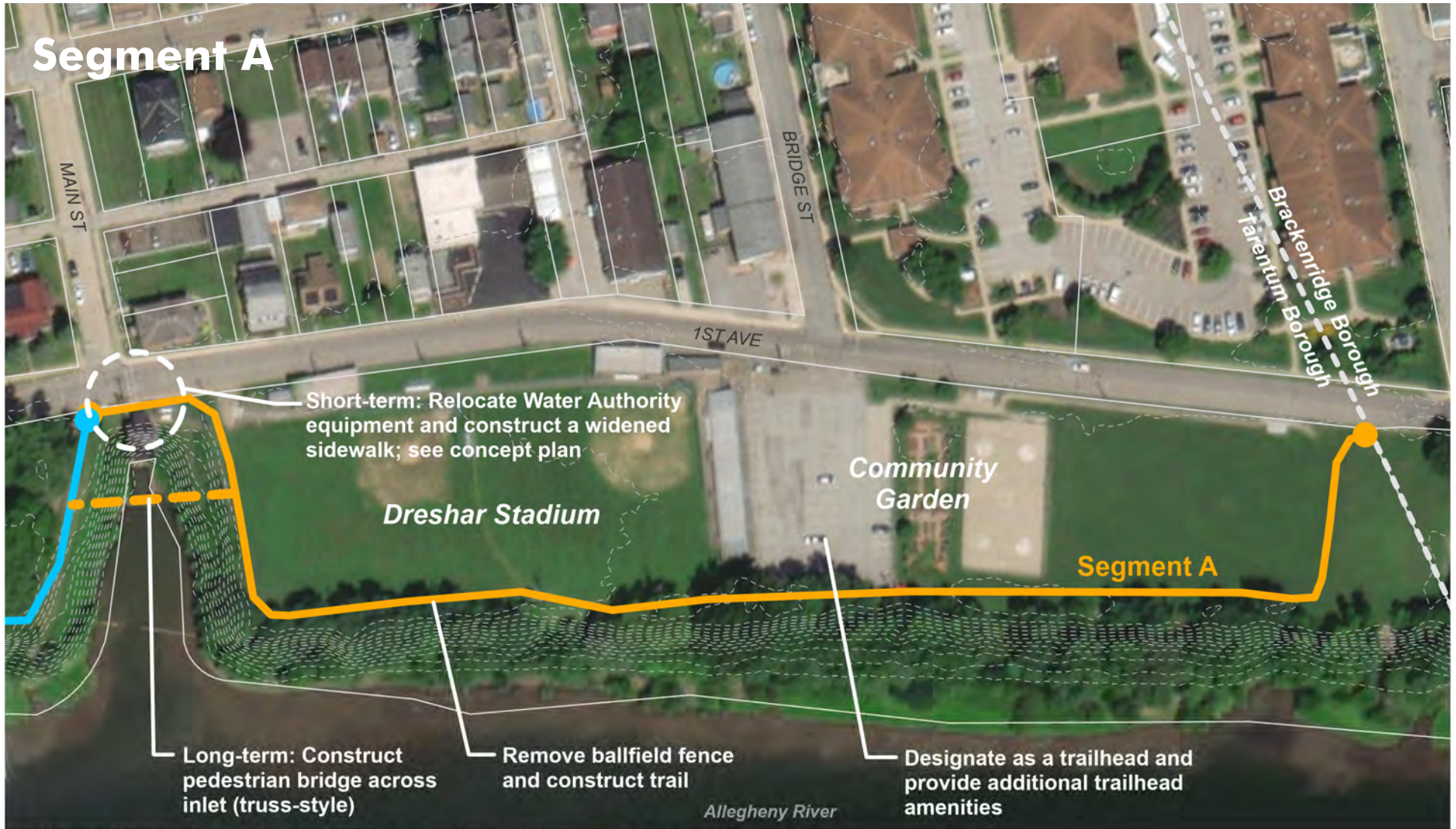


East Deer Recreational Facility

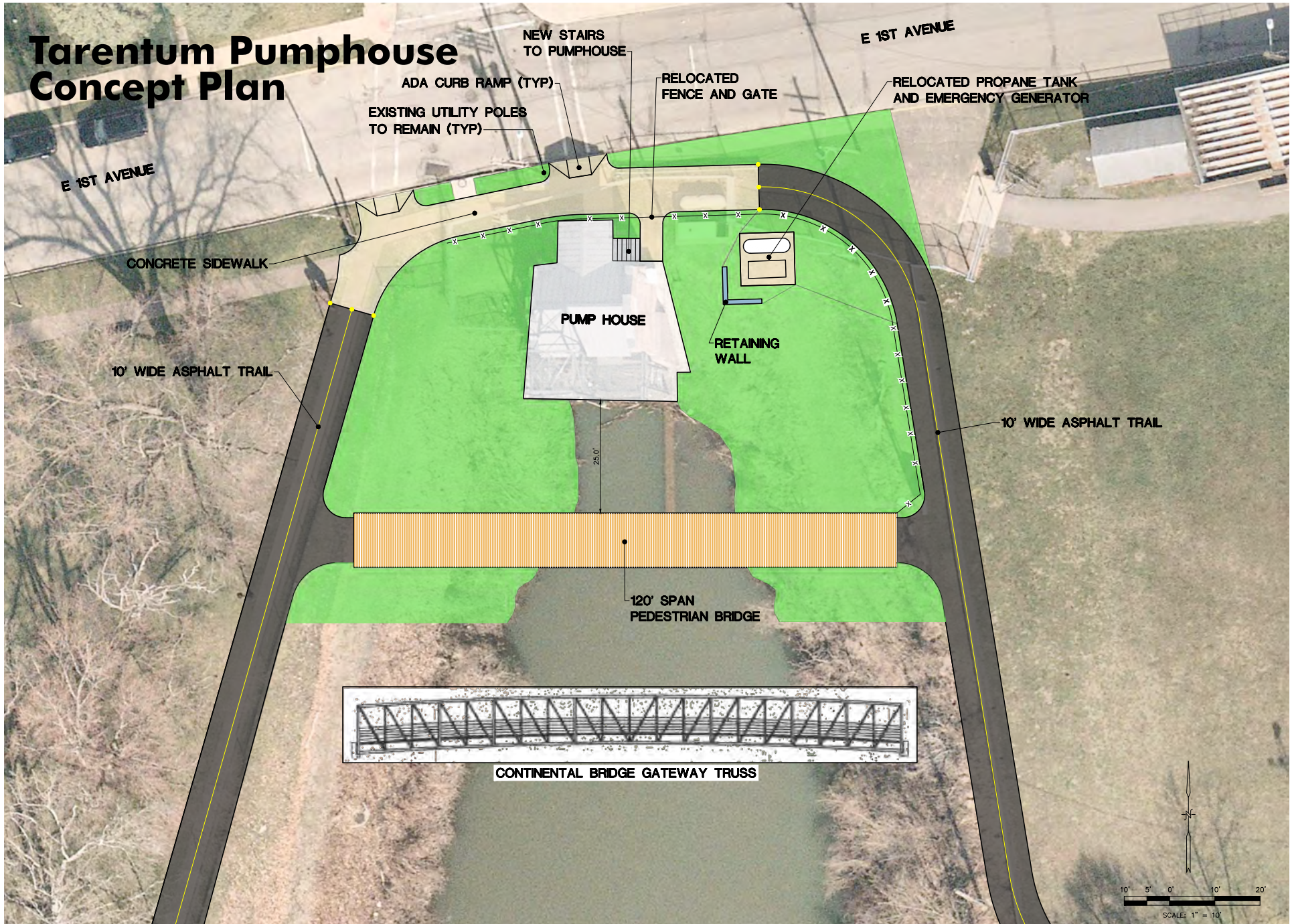


Freeport Road

Segment A



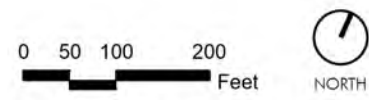
Tarentum Pumphouse Concept Plan



Segment B



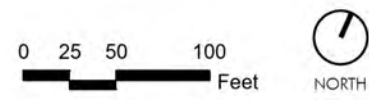
- Municipal boundary
- - - 2' contours
- ▭ Parcels
- Average crossing markings
- ⊙ Major crossing markings
- Minor crossing markings
- Pedestrian-bicycle bridge
- Existing path, improved
- Existing path, improved; suggested dismount area
- New 8-10 ft wide paved trail
- On-road sharrows
- On-road cycletrack
- Additional pavement graphic

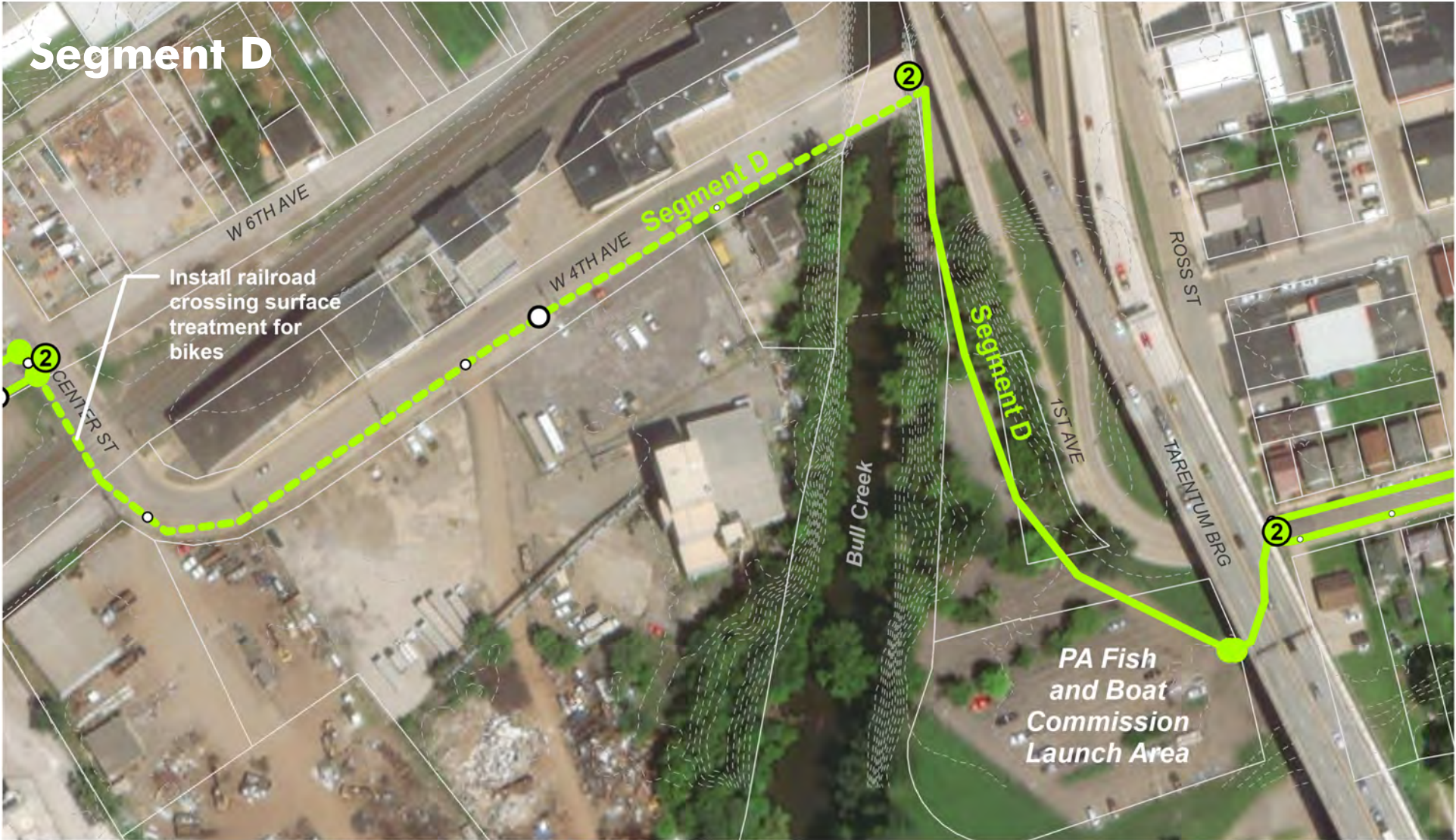





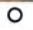


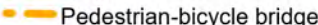






Segment C

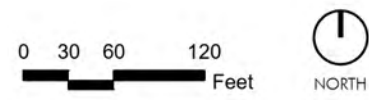


- Municipal boundary
- 2' contours
- Parcels
- Average crossing markings
- Major crossing markings
- Minor crossing markings
- Pedestrian-bicycle bridge
- Existing path, improved
- Existing path, improved; suggested dismount area
- New 8-10 ft wide paved trail
- On-road sharrows
- On-road cycletrack
- Additional pavement graphic

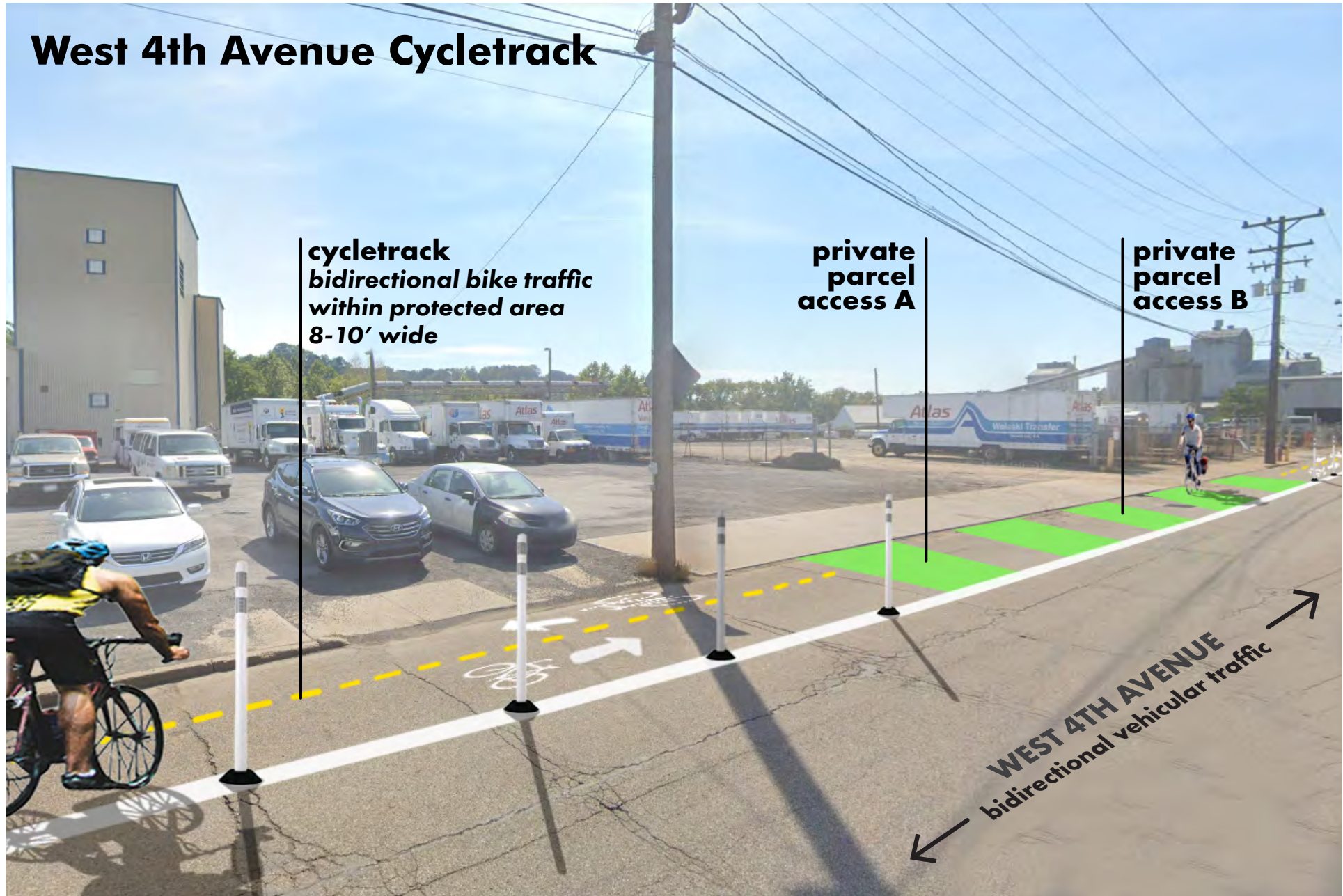




-  Municipal boundary
-  2' contours
-  Parcels
-  Average crossing markings
-  Major crossing markings
-  Minor crossing markings
-  Pedestrian-bicycle bridge
-  Existing path, improved
-  Existing path, improved; suggested dismount area
-  New 8-10 ft wide paved trail
-  On-road sharrows
-  On-road cycletrack
-  Additional pavement graphic



West 4th Avenue Cycletrack



cycletrack
bidirectional bike traffic
within protected area
8-10' wide

private
parcel
access A

private
parcel
access B

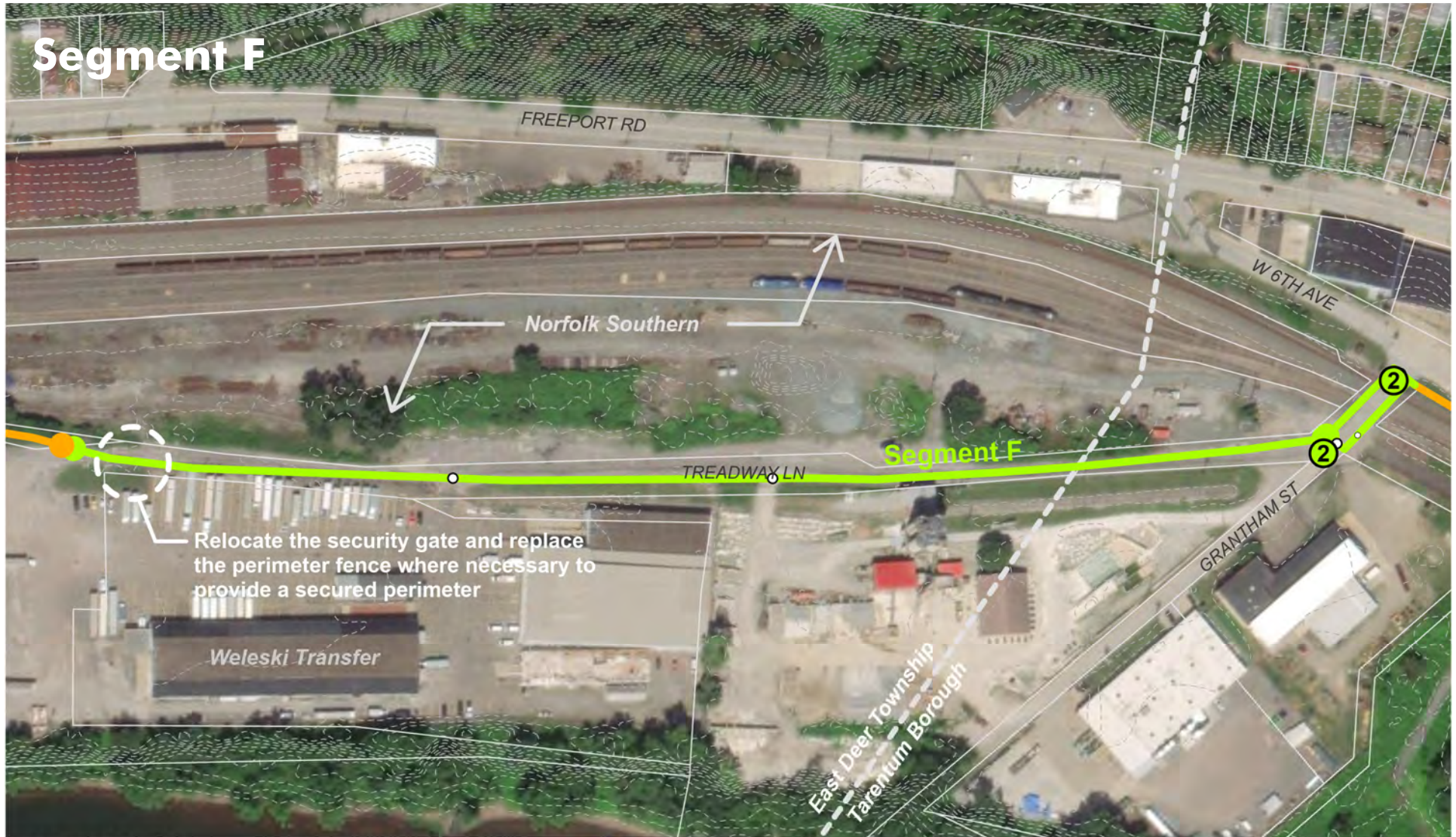
WEST 4TH AVENUE
bidirectional vehicular traffic



- ▬ Municipal boundary
- - - 2' contours
- ▭ Parcels
- Average crossing markings
- ⊙ Major crossing markings
- Minor crossing markings
- - - Pedestrian-bicycle bridge
- Existing path, improved
- - - Existing path, improved; suggested dismount area
- New 8-10 ft wide paved trail
- On-road sharrows
- On-road cycletrack
- Additional pavement graphic



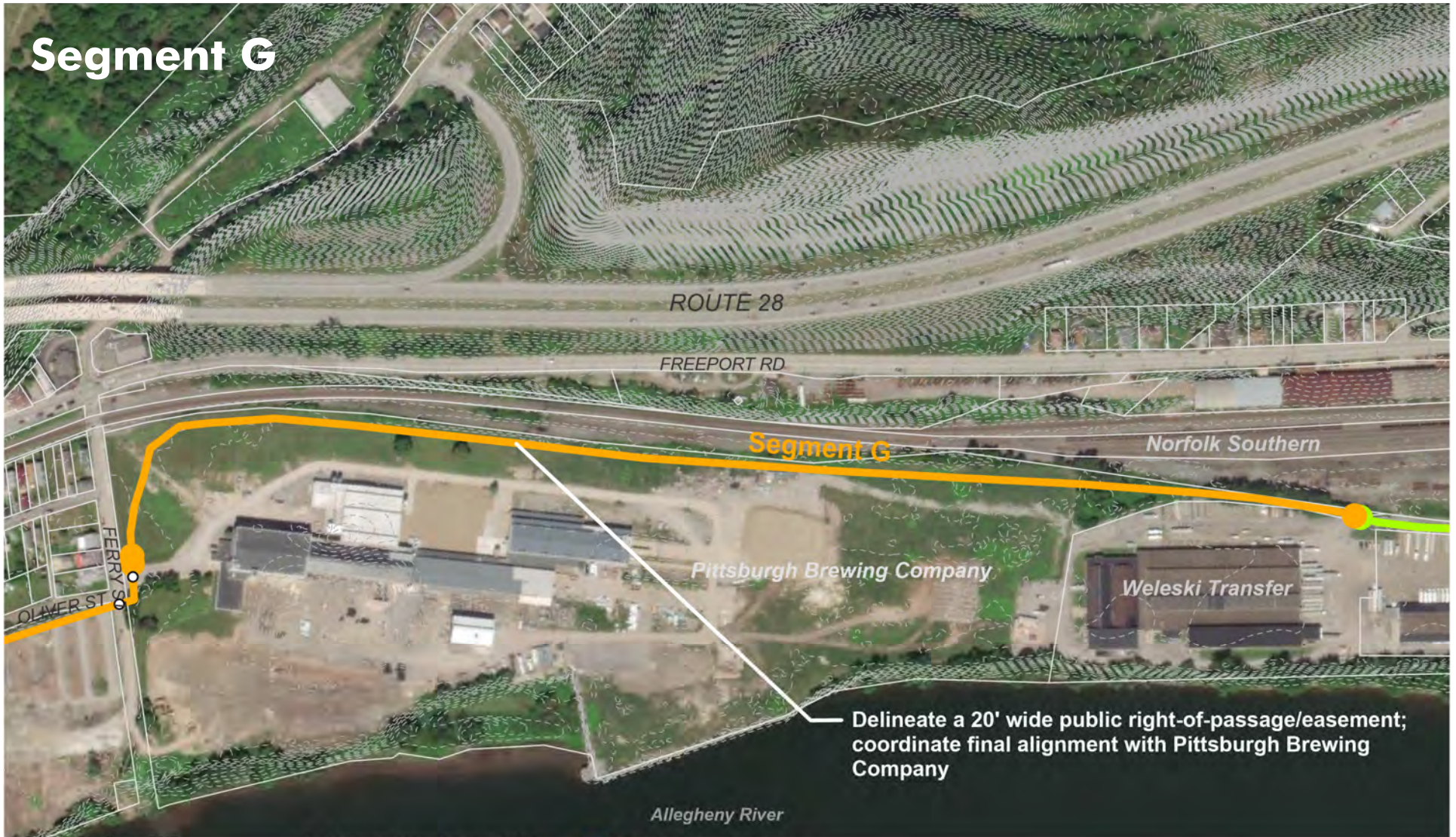
Segment F



- | | | |
|--|--|--|
| <ul style="list-style-type: none"> ▬ Municipal boundary --- 2' contours ▭ Parcels | <ul style="list-style-type: none"> ○ Average crossing markings ⊙ Major crossing markings ◦ Minor crossing markings — Pedestrian-bicycle bridge | <ul style="list-style-type: none"> — Existing path, improved --- Existing path, improved; suggested dismount area — New 8-10 ft wide paved trail — On-road sharrows — On-road cycletrack ● Additional pavement graphic |
|--|--|--|



Segment G



- Municipal boundary
- 2' contours
- Parcels
- Average crossing markings
- Major crossing markings
- Minor crossing markings
- Pedestrian-bicycle bridge
- Existing path, improved
- Existing path, improved; suggested dismount area
- New 8-10 ft wide paved trail
- On-road sharrows
- On-road cycletrack
- Additional pavement graphic

Delineate a 20' wide public right-of-passage/easement; coordinate final alignment with Pittsburgh Brewing Company





Segment H

Segment H

People's Gas

Bailey Run

OLIVER ST

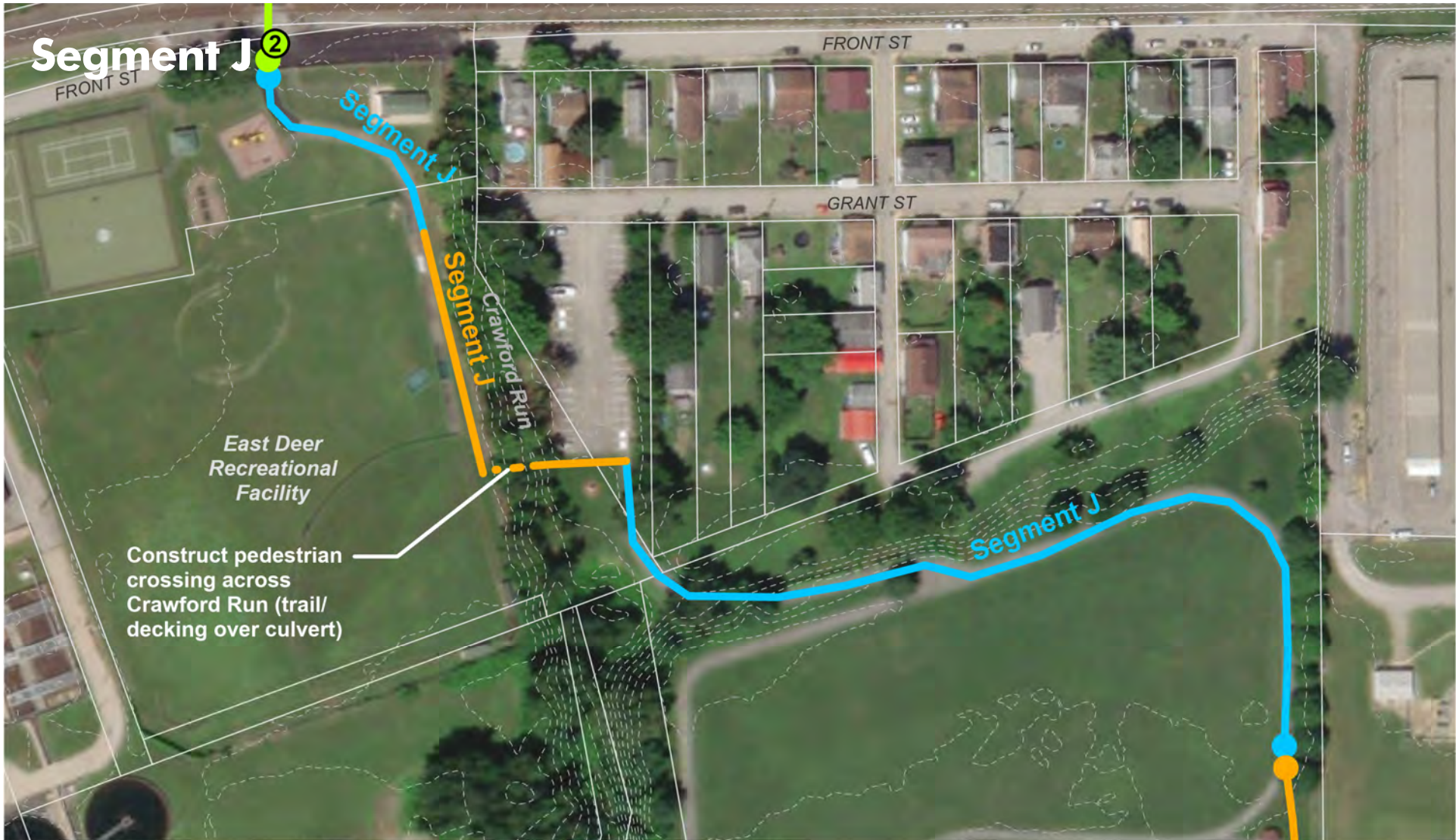
FERRYS ST

Allegheny River

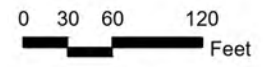
Construct pedestrian bridge across Bailey Run (truss-style)

- ▬ Municipal boundary
- - - 2' contours
- ▭ Parcels
- Average crossing markings
- Major crossing markings
- Minor crossing markings
- Pedestrian-bicycle bridge
- Existing path, improved
- Existing path, improved; suggested dismant area
- New 8-10 ft wide paved trail
- On-road sharrow
- On-road cycletrack
- Additional pavement graphic





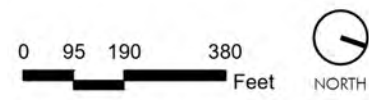
- Municipal boundary
- 2' contours
- Parcels
- Average crossing markings
- Major crossing markings
- Minor crossing markings
- Pedestrian-bicycle bridge
- Existing path, improved
- Existing path, improved; suggested dismount area
- New 8-10 ft wide paved trail
- On-road sharrows
- On-road cycletrack
- Additional pavement graphic



Segment K



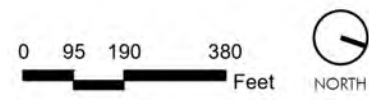
- Municipal boundary
- 2' contours
- Parcels
- Average crossing markings
- Major crossing markings
- Minor crossing markings
- Pedestrian-bicycle bridge
- Existing path, improved
- Existing path, improved; suggested dismount area
- New 8-10 ft wide paved trail
- On-road sharrows
- On-road cycletrack
- Additional pavement graphic



Segment K (cont.)



- Parcels
- 2' contours
- Municipal boundary
- Average crossing markings
- Major crossing markings
- Minor crossing markings
- Pedestrian-bicycle bridge
- Existing path, improved
- Existing path, improved; suggested dismount area
- New 8-10 ft wide paved trail
- On-road sharrows
- On-road cycletrack
- Additional pavement graphic





Thank You
Questions/Comments