

# Alignment Study

## Three Rivers Heritage Trail & Community Connection

Cheswick Borough, Allegheny County



**Gibson-Thomas**  
ENGINEERING

---

# THREE RIVERS HERITAGE TRAIL AND COMMUNITY CONNECTION CHESWICK BOROUGH

**PREPARED FOR:**

Cheswick Borough  
In partnership with  
Friends of the Riverfront

**FUNDED IN PART BY:**

This project was financed in part by a grant from the Active Allegheny Grant Program  
through the Redevelopment Authority of Allegheny County

**PREPARED BY:**

Gibson Thomas Engineering Co., Inc.  
9951 Old Perry Highway  
Wexford, PA 15090

**JULY 2023**



**EXECUTIVE SUMMARY.....iii**

**SECTION 1: THREE RIVERS HERITAGE TRAIL OVERVIEW .....1**

    Background.....1

    Acknowledgements .....2

    Project Purpose and Need.....2

    Overview of the Study Process.....2

**SECTION 2: BACKGROUND AND DATA COLLECTION .....3**

    Cheswick Borough.....3

    Collect Data and Background Documents .....3

    Develop Base Maps .....3

    Document Site Conditions.....3

    Develop Corridor Alternatives.....4

**SECTION 3: OVERVIEW OF ALTERNATIVES .....5**

    Riverfront Trail Alignment.....5

    Local Neighborhood Alignment.....6

    Business District/Neighborhood Alignment.....7

    Alignment Alternatives Comparison .....8

    Cost Comparison.....8

**SECTION 4: SUMMARY OF PUBLIC ENGAGEMENT .....9**

    Steering Committee Kickoff Meeting .....9

    First Public Survey.....9

    Steering Committee Meeting .....9

    Public Meeting .....9

    Second Public Survey .....9

    Steering Committee Meeting .....9

    Second Public Meeting.....10

**SECTION 5: CONCLUSION .....11**

    Riverfront Trail Alignment.....11

    Local Neighborhood Alignment.....11

    Business District/Neighborhood Alignment.....11

    Funding Sources.....11

**LIST OF FIGURES AND TABLES**

Figure 1.1 Map of Three Rivers Heritage Trail ..... 1  
Figure 2.1 Map of Allegheny County ..... 3  
Figure 2.2 FEMA Flood Map ..... 3  
Figure 2.3 Soil Type Map ..... 3  
Figure 2.3 Original Part 1 and Part 2 Alignments ..... 4  
Figure 3.1 Shared Use Path Typical Section ..... 5  
Figure 3.2 Shared Use Lanes Typical Section ..... 6  
Table 3.1 Alignment Alternatives Comparison ..... 8  
Table 3.2 Cost Comparison ..... 8

**LIST OF APPENDICES**

Appendix A Alignment Study Plans  
Appendix B Cost Estimates  
Appendix C Public Involvement

Over the past several decades, Western Pennsylvania has been the scene of tremendous transformation. Communities that were once anchored by heavy industries are now working to incorporate a more robust network of technology and service-based employers. Polluted waterways and choked riverfronts are now being restored and repurposed. And a vast regional trail network has emerged following the paths of our rivers and former railroad corridors.

The Three Rivers Heritage Trail is a 33 mile multi-use riverfront trail system in the Pittsburgh region. The trail has segments on both banks of Pittsburgh's three rivers with access to city neighborhoods, business districts, and local attractions. The trail promotes a healthy lifestyle, is popular for recreation, and provides a safe route for commuters. Trails represent a long-term sustainable economic generator and offer health and vitality benefits to citizens. The trail also serves as the Pittsburgh hub for other trail system connections (Great Allegheny Passage, Erie-to-Pittsburgh Trail, Pittsburgh-to-Harrisburg Main Line Canal Greenway, future connections to the Montour Trail and Ohio River Greenway Trail). In 2010, the Three Rivers Heritage Trail was awarded National Recreation Trail status by the U.S. Department of the Interior.

In 2011, the Community Trails Initiative was completed to analyze the feasibility of connecting 16 communities along the northern shore within the Allegheny Valley with trail. These communities include: City of Pittsburgh, Millvale Borough, Shaler Township, Etna Borough, Sharpsburg Borough, Aspinwall Borough, O'Hara Township, Blawnox Borough, Harmar Township, Cheswick Borough, Springdale Borough, Springdale Township, East Deer Township, Tarentum Borough, Brackenridge Borough and Harrison Township. Cheswick Borough, in coordination with Friends of the Riverfront is looking to further develop segments of the Three Rivers Heritage Trail through their municipality. Further development of the trail is of vital importance to the community as well as trail users at large. In October 2020, Cheswick Borough received a grant for the planning and design of a roughly one-mile connection in the community that will connect with the developing segment in Springdale Borough. The Borough investigated an alternative/connecting route that can be used by local residents, creating a loop that will promote safe outdoor recreation and provide a connection between the business district and the riverfront.

The feasibility study of this trail corridor features an extensive public participation process including: steering committees, public meetings and public opinion surveys.



# THREE RIVERS HERITAGE TRAIL OVERVIEW

## SECTION 1 THREE RIVERS HERITAGE TRAIL OVERVIEW

### Background

The Three Rivers Heritage Trail is a 33 mile multi-use riverfront trail system in the Pittsburgh region. The trail has segments on both banks of Pittsburgh's three rivers with access to city neighborhoods, business districts, and local attractions. The trail promotes a healthy lifestyle, is popular for recreation, and provides a safe route for commuters.

In 2011, the Community Trails Initiative was completed to analyze the feasibility of connecting 16 communities along the northern shore within the Allegheny Valley with trail. These communities include: City of Pittsburgh, Millvale Borough, Shaler Township, Etna Borough, Sharpsburg Borough, Aspinwall Borough, O'Hara Township, Blawnox Borough, Harmar Township, Cheswick Borough, Springdale Borough, Springdale Township, East Deer Township, Tarentum

Borough, Brackenridge Borough and Harrison Township. Cheswick Borough, in coordination with Friends of the Riverfront is looking to further develop segments of the Three Rivers Heritage Trail through their municipality. In October 2020, Cheswick Borough received a grant for the planning and design of a roughly one-mile connection in the community that will connect with the developing segment in Springdale Borough. The Borough also investigated an alternative/ connecting route that can be used by local residents, creating a loop that will promote safe outdoor recreation and provide a connection between the business district and the riverfront.

In addition to furthering the Three Rivers Heritage Trail, this portion of trail is also vital to the Erie to Pittsburgh Trail initiative. The Erie to Pittsburgh Trail Initiative seeks to connect Point State Park in Pittsburgh to the Bayfront in Erie, PA.

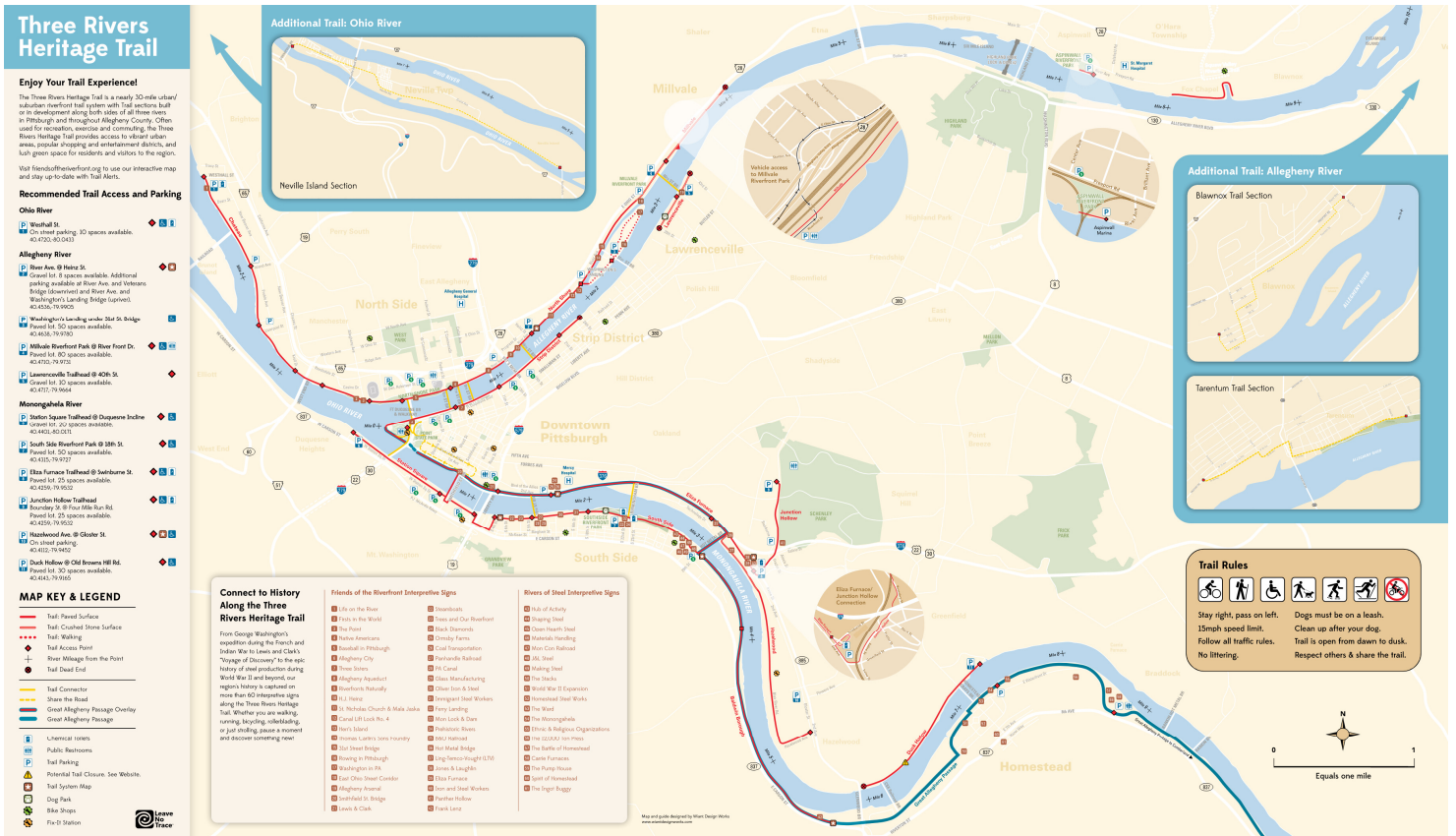


Figure 1.1 Map of Three Rivers Heritage Trail

## Acknowledgements

Cheswick Borough, in partnership with Friends of the Riverfront, led the development of this plan along with and considering the interests of the following stakeholders:

- Allegheny County
- Allegheny County Police Department
- Springdale Borough
- Cheswick Public Works
- Port Authority of Allegheny
- PennDOT District 11
- Neighborhood Groups
- Adjacent Property Owners

## Project Purpose and Need

Cheswick Borough is looking to further develop a segment of the Three Rivers Heritage Trail through their municipality. Further development of the trail is of vital importance to the community as well as trail users at large.

The Riverfront Alignment (Part 1) will provide a safe pedestrian and recreational trail connection from the Harmar Township line to Springdale Borough through Cheswick Borough and along the riverfront.

The Community Connection Alignment (Part 2) will provide a safe alternative route to be utilized in the event that the riverfront trail is unable to be accessed due to flooding. This route will also create a loop that residents can use safely for outdoor recreation and connects the business district and riverfront. This route will serve as a way to connect residents on the northern side of Pittsburgh Street (SR 1001) safely to the riverfront and the proposed Part 1 Trail Segment.

## Overview of the Study Process

After the initial kickoff meeting, Gibson-Thomas moved forward with the requested study information for the project area. Background information was gathered along all possible alignments. This includes right-of-way information, Borough codes and ordinances, flood studies, property owner information, traffic information, existing studies, and information on adjacent projects.

Existing digital base mapping, aerial photographs, zoning maps, boundary descriptions, and copies of deeds as well as site reconnaissance visits were utilized to analyze the alignments and inventory the existing conditions.

The analysis focused on the safety, underlying geology and soil conditions, hydrology and site watersheds, slope and slope aspect, viewsheds, and surrounding influences. Flooding, stormwater, and maintenance issues that may affect the alignments were investigated.

While analyzing the alignments, many factors were considered including: surrounding traffic generators, corridor width and property ownership, transportation connections, roadway and railroad crossings, pedestrian facilities, and environmental conditions.

Public surveys were conducted in the summer of 2022.

Based on the findings from the alignment analysis, plans of the proposed alignments were developed and presented to the steering committee and public. Feedback from the meetings were incorporated into the plans and cost estimates were developed for the final alignments.

## SECTION 2 BACKGROUND AND DATA COLLECTION

### Cheswick Borough

Cheswick Borough, Allegheny County is located approximately 17 miles northeast of the City of Pittsburgh. It is located along the northern bank of the Allegheny River. The population of the Borough is approximately 1,700 with a median age of 47 years. There are two state roadways through the Borough and a rail line. The Borough also has two parks within its limits, one of which has the potential to be a popular trailhead for the Three Rivers Heritage Trail.

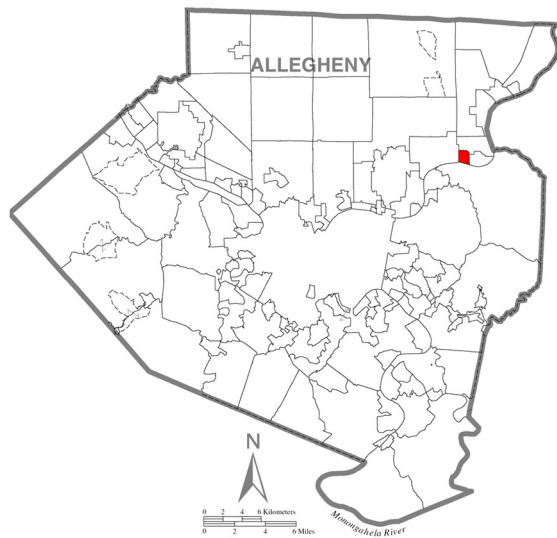


Figure 2.1 Map of Allegheny County

### Collect Data and Background Documents

Gibson-Thomas reviewed background documents including past studies, engineering and as-built drawings, tax maps, existing leases, Borough Zoning and Building Ordinances, aerial maps, and other pertinent information.

Because of the known flooding along the riverfront, FEMA maps were referenced to determine flood hazard areas. The maps showed that most of the areas closer to the river than the railroad line and Blockdale Street were within the flood hazard area. A portion of Cheswick Avenue is within the flood hazard area as well. The FEMA flood map can be found in Figure 2.2.

Soil types and classifications were also investigated for the Borough. A soil survey was done through the United States Department of Agriculture and determined that the

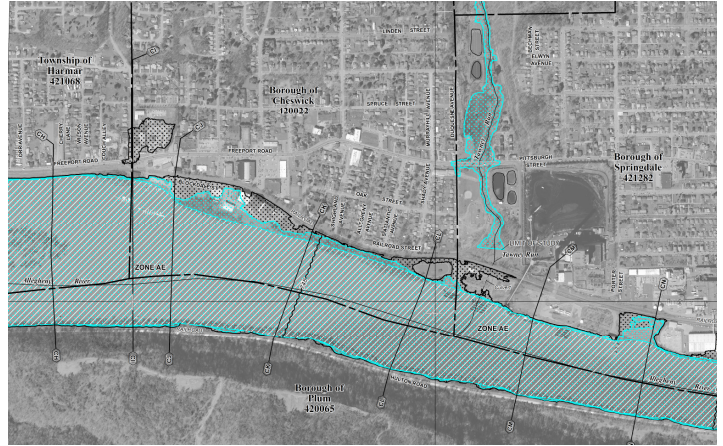


Figure 2.2 FEMA Flood Map

entire project areas have soil classifications that are subsets of Urban Land. The soil map can be found in Figure 2.3.

### Develop Base Maps

Maps were developed with representations of property lines, roadways, Right-of-Way, property ownership, and land use designations. These base maps are used as the background for plans showing potential alignments of the Three Rivers Heritage Trail.

### Document Site Conditions

Gibson-Thomas reviewed Cheswick codes and ordinances along with other guidance for shared use path design while analyzing potential alignments for the proposed trail. Multiple site visits were conducted to determine land use, observe traffic conditions, observe soil conditions, identify existing features.

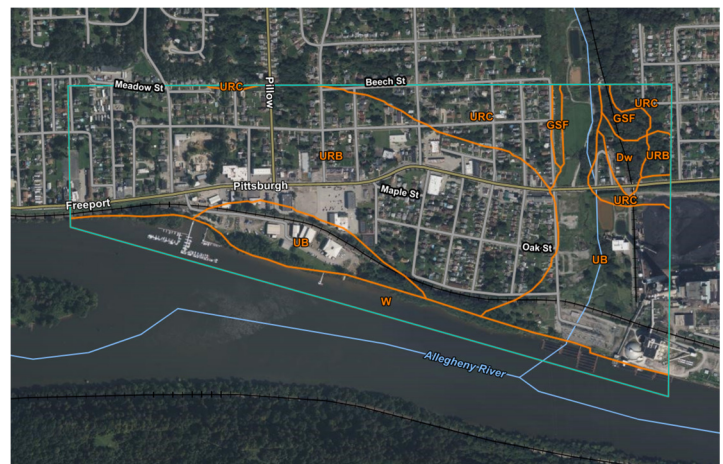


Figure 2.3 Soil Type Map



# BACKGROUND INFORMATION AND DATA COLLECTION

## Develop Corridor Alternatives

Alternatives mapping was developed based on the potential routes identified in the Request For Proposals.

The first alignment requested in the Request for Proposals was along the riverfront (Part 1). The Riverfront Alignment was the primary route of the trail from the Harmar Township line to Springdale Borough. This will connect with the route in Springdale using the private railroad crossing on South Duquesne Avenue. A portion of this trail has the potential to flood during major weather events. As noted previously, portions of this route are within the FEMA flood hazard area. Additionally, evidence of flooding was noted during field visits. Therefore, the Borough desired an alternate route be

investigated in order to not interrupt usage during flooding.

The second alignment requested in the Request for Proposals was along Borough streets and was referred to as Part 2. This alternate route would be used in the event that the riverfront trail is unable to be accessed due to flooding. This route will also serve as a way to connect residents on the northern side of Pittsburgh Street (SR 1001) safely to the riverfront. Part 2 would interconnect with the riverfront trail to create a loop that can be used by residents for transportation or for recreational and health activities.

These initial requested alignments and base maps can be found in Figure 2.3.

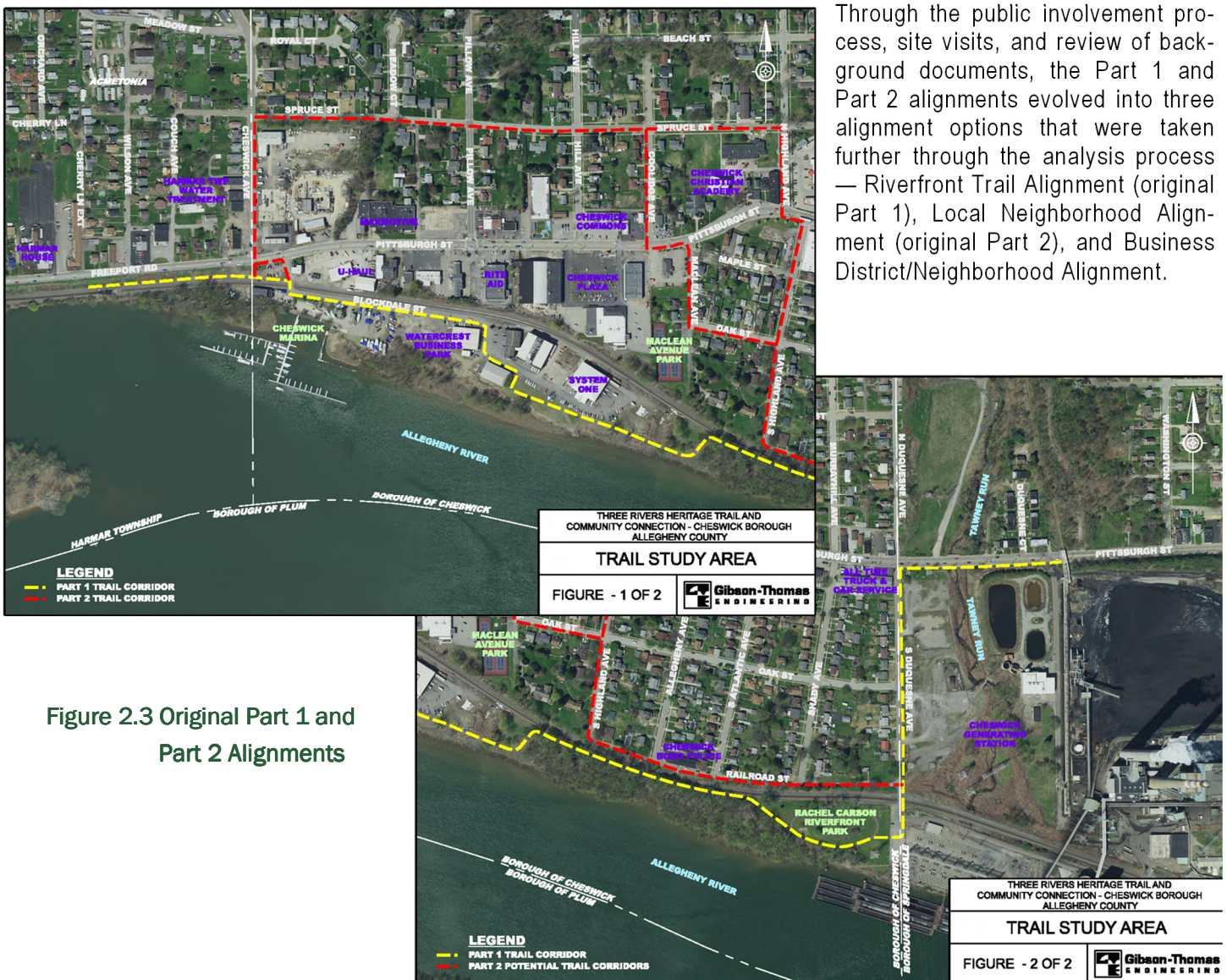


Figure 2.3 Original Part 1 and Part 2 Alignments

## SECTION 3 OVERVIEW OF ALTERNATIVES

### Alternate 1 Riverfront Alignment

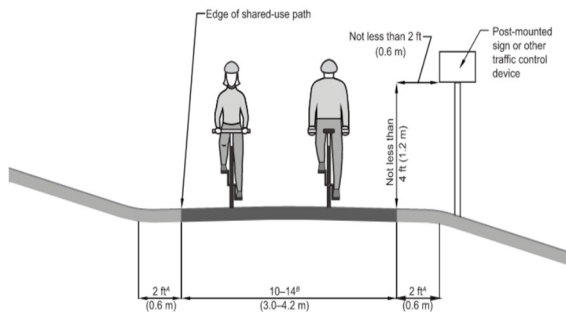
Cheswick Borough has approximately 2 miles of riverfront land. Utilizing this natural resource would make the Cheswick section one of the premier sections of the Three Rivers Heritage Trail. This proposed route (Original Part 1) will begin at the southern end of the borough, follow along Pittsburgh Street (SR 1001), turn onto Blockdale Street in Watercrest Business Park before exiting the business park and traveling along the riverfront area. The trail would then connect to Rachel Carson Riverfront Park before running along South Duquesne Avenue, where it would connect with the Springdale portion of the trail at the northern end of the borough. This route is illustrated by the black line in Appendix A.

This route has a unique set of challenges. In order to access the riverfront, the trail would have to cross railroad tracks at both the northern and southern limits of the borough. These existing railroad crossings have histories of crashes involving vehicles and trains. There are no gates or lights at these crossings, only typical “crossbuck” signs and stop signs. Additionally, it has been determined that the crossing on Blockdale Street is privately owned which may make it difficult to implement public improvements at this location. Coordination with the railroad company and crossing lease holders will be needed in order to agree on crossings and to guarantee safety for the traveling public.

A portion of this trail can utilize existing roadways and right-of-way widths. However, a proposed trail along the river would pass through privately owned land between Watercrest Business Park and Rachel Carson Riverfront Park. Coordination with property owners and right-of-way acquisition will be necessary for construction of this portion of the trail.

The majority of this alignment will be composed as a shared use path. Typical sections of shared use paths from the AASHTO *Guide for the Development of Bicycle Facilities* can be found in Figure 3.1.

The portion of the trail between Watercrest Business Park and Rachel Carson Park is also within the FEMA Floodplain. The soil in this area is extremely wet and becomes flooded. This created construction issues during the recent sewer line project in this area. Therefore, design of the trail will account for the flood prone conditions and solutions will be investigated that will be able to withstand or minimize the impacts of these conditions. Possible solutions could include impervious trail surfaces such as asphalt or potentially a raised trail that will utilize a structure through the lowest area. Cost estimates for these trail conditions were created and are included in Figure 3.1 and Appendix B.



Notes:  
<sup>A</sup> (1V:6H) Maximum slope (typ.)  
<sup>B</sup> More if necessary to meet anticipated volumes and mix of users, per the *Shared Use Path Level of Service Calculator* [9]

Figure 5-1. Typical Cross Section of Two-Way, Shared Use Path on Independent Right-of-Way

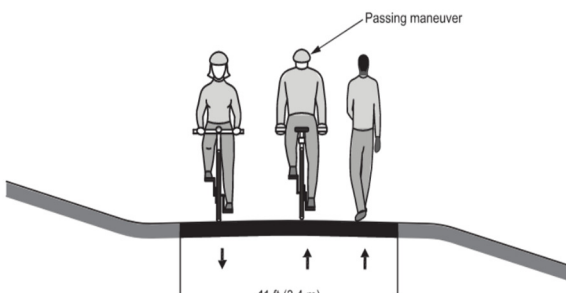


Figure 3.1 Shared Use Path Typical Section

## Alternate 2 Local Neighborhood Alignment

The request for proposals also asked for an alternate route that would be used in the event that the riverfront trail is unable to be accessed due to flooding (Original Part 2). This route was meant to connect residents on both sides of Pittsburgh Street (SR 1001) and would have the ability to be used as a loop that could be used by residents for transportation and recreational/health activities.

All routes and intersections within the Borough were investigated in order to determine the safest route to get bicyclists and pedestrians through the borough on the Three Rivers Heritage Trail.

It was also a goal to run this route along the parks within Cheswick.

Efforts were made to keep the route off of the busier streets (e.g. Pittsburgh Street (SR 1001)) and to determine what intersection and roadway improvements would be necessary for this route.

The final route for the Local Neighborhood Alignment can be found in [Appendix A](#). It will follow the yellow alignment. Beginning at the western end of the borough, the Local Neighborhood Alignment would turn north from Freeport Road/Pittsburgh Street (SR 1001) onto Cheswick Avenue. The trail would then turn east onto Spruce Street. The trail would follow Spruce Street east until turning south onto North Highland Avenue. The trail would cross Pittsburgh Street (SR 1001) from N Highland Avenue onto S Highland Avenue. The trail would follow South Highland Avenue until turning east onto Oak Street. The trail would follow Oak Street and cross S Duquesne Avenue to tie into the proposed Springdale portion of the Three Rivers Heritage Trail.

The majority of this alignment will use shared use lanes. Typical sections of shared use lanes from the *AASHTO Guide for the Development of Bicycle Facilities* can be found in [Figure 3.2](#).

During the study process, this yellow alignment was considered to be a viable option for both pedestrians and bicyclists to move through the Borough in a safe manner. In order to best accommodate both types of users, upgrades to signing, pavement markings, sidewalks, curb ramps, and detectable warning surfaces, as

well as a small portion of shared use trail would be proposed.

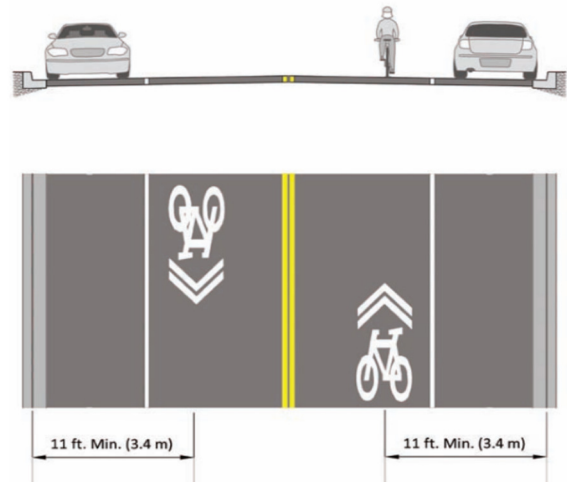


Figure 4-5. Typical Shared-Lane Marking Cross Section on Street with Parking



Figure 4-6. Typical Shared-Lane Marking Cross Section on Street with No On-Street Parking

Figure 3.2 Shared Use Lanes Typical Section

## Alternate 3 Business District/ Neighborhood Alignment

Upon receiving public feedback and direction from Cheswick Borough, a third trail alignment was considered. This third alignment will utilize the yellow route in Appendix A and described in the Local Neighborhood Alignment section for bicyclists. However, pedestrians will remain on Pittsburgh Street (SR 1001) through the borough. The pedestrian route is depicted with the green line in the plans in Appendix A. This split of users will allow bicyclists to remain off of the busiest streets in the borough and will funnel pedestrians through the business district.

While this alignment will eliminate the need to construct new sidewalks, there are many upgrades that will be necessary. Possible upgrades include sidewalk improvements/reconstruction, ramps, pavement markings, and signing.

Because Pittsburgh Street (SR 1001) is a State Route, PennDOT will be heavily involved with any improvements required along the sidewalks and intersections.



**Business District Pedestrian Route  
Utilizes Pittsburgh Street (SR 1001)**



**Local Neighborhood Bicycle Route  
Utilizes Spruce Street**

## Alignment Alternatives Comparison

The following tables compare the different alignments that were analyzed. Table 3.1 compares many factors involved in the design and construction process of the facilities.

**Table 3.1 Alignment Alternatives Comparison**

Factors	Riverfront Alignment (Black)	Local Neighborhood Alignment (Yellow)	Business District/ Neighborhood Alignment (Yellow & Green)
Level of Connectivity	Low	Moderate	High
Railroad Crossings	2	0	0
Trail Type	Shared use path	Share the road/ sidewalks	Share the road/ sidewalks
Number of Trailheads	1	0	0
Trail Length	0.8 miles	1.0 miles	0.7 miles pedestrians 1.0 miles bikes
Complexity	High	Moderate	Low
Right-of-Way and Property Impacts	High	Moderate	Low
Perceived Public Input Ranking (1 = Most Desirable)	1	3	2

## Cost Comparison

Table 3.2 compares the estimated cost of construction for the alignments using multiple material types and levels of effort. Costs were developed for the Riverfront Trail Alignment and the Business District/Neighborhood Alignment. No costs were developed for the Local Neighborhood Alignment due to public and public official feedback.

**Table 3.2 Cost Comparison**

Riverfront Alignment (Aggregate)	Riverfront Alignment (Asphalt)	Riverfront Alignment (Asphalt with Boardwalk)	Business District/ Neighborhood Alignment (With Sidewalk Reconstruction)	Business District/ Neighborhood Alignment (Without Sidewalk Reconstruction)
\$436,000	\$712,000	\$1,572,000	\$545,600	\$100,400

## SECTION 4

### SUMMARY OF PUBLIC ENGAGEMENT

#### Steering Committee Kickoff Meeting

A Steering Committee Kickoff meeting was held on May 23, 2022. During the kickoff meeting, Gibson-Thomas gave an overview of their work experience, as well as defined the purpose and goals of the Alignment Study and the steps of the Alignment Study process.

#### First Public Survey

A public survey was conducted June through September of 2022. The survey was accessible online. This initial round of surveys was completed by many residents of Cheswick and surrounding communities. Over 80 opinions were recorded with the vast majority being in support of a trail connection that will benefit the community economically and provide a safe walking and biking route away from Pittsburgh Street (SR 1001). Tables containing the survey questions and responses can be found in [Appendix C](#).

#### Steering Committee Meeting

A Steering Committee meeting was held to discuss the original Riverfront and Community Connection routes developed by Gibson-Thomas. This meeting was attended by representatives from Cheswick Council, Cheswick residents, PA Environmental Council, Friends of the Riverfront, and PennDOT District 11.

The Riverfront Trail Alignment (Original Part 1) was discussed first. The proposed trail alignment has been moved, to avoid parking lot conflicts, onto land surrounding the pumping station currently being constructed. There were no objections to this modification and the overall trail alignment. The possibility of flooding and maintenance costs of the riverfront trail were discussed. Gibson-Thomas noted that a variety of trail materials will be evaluated based on their effectiveness and their associated costs. The possibility of using the sewer right of way for the trail will need investigated and Right-of-Way may still need to be purchased.

The Community Connection Alternate Trail (Original Part 2) through the town was discussed next. The alignment has been changed to cross Pittsburgh Street (SR 1001) at the signalized intersection with Highland Avenue in order to provide a safe crossing. The alignment has also been moved from Railroad Street to Oak Street because of the roadway widths and sidewalks. Everyone agreed with these changes and the overall

alignment. This alignment would have required the construction of some sidewalks along Cheswick Avenue and Spruce Street. Signs are also proposed along the route to call out Borough Parks and Amenities.

#### Public Meeting

A public meeting was held on February 8, 2023 at the Cheswick Volunteer Fire Station. The meeting was held from 5:30 PM to 7:30 PM. The public meeting was attended by approximately 20 local residents. Many residents were in support of the project and were interested in the possibilities of both a riverfront route and a route through the community. However there were many community members in attendance who voiced opposition to the proposed route through the community. They had concerns about increased pedestrian and bike traffic through the neighborhoods, possible loss of parking, sidewalk construction and maintenance, and possibilities of litter. Public meeting displays, including maps of the Alignments and Typical Sections can be found in [Appendix C](#).

#### Second Public Survey

A second survey was made available after the public meeting. This survey was specifically about the Riverfront and Community routes that were discussed at the Public Meeting. This survey received less than ten responses. All responses were in support of the Riverfront Route with one respondent citing a concern about the possibility of homeless encampments occurring along the trail. The majority of the respondents were also in support of the route through the community with about 25 percent voicing concern for safety with this option. Tables including the questions and responses to this survey are included in [Appendix C](#).

#### Steering Committee Meeting

A Steering Committee meeting was held to discuss the feedback received during the public meeting. Considering the concerns voiced by many of the residents that will be directly impacted by the Riverfront Trail Construction and the Local Neighborhood Alignment improvements, a third option was decided to be developed. This third option would give Bicyclists a safe path through the community while also reducing the number of new facilities that will need to be constructed. The committee strived to find a solution that would improve safety, improve economic factors and address concerns from the community.

## Second Public Meeting

A second public meeting was held on June 29, 2023 at the Cheswick Volunteer Fire Station. The meeting was held from 6:00 PM to 7:00 PM. The public meeting was attended by approximately 10 local residents. The purpose of the meeting was to go over the findings contained within the report. Many residents remained in favor of the Riverfront Trail Alignment despite it currently being infeasible. Most of the residents were in support of the proposed alignment through the business district and neighborhoods with some residents voicing concern about sending trail users into the residential neighborhoods. The alignments presented during the second public meeting can be found in [Appendix A](#).

## SECTION 5 CONCLUSION

### Alternate 1 Riverfront Alignment

The Riverfront Trail Alignment (Yellow in Appendix A) is a desirable option. It would give trail users a safe route away from traffic while also showcasing Cheswick's natural resources along the Allegheny River. This alternative would also have a trailhead at Rachel Carson Park. During the Public Survey and Public Meetings, this option got the most positive feedback because of the desirable location and separation from traffic. **This option is not currently feasible because the Borough does not own all of the riverfront property necessary and the procurement of the needed property is not possible at this time.** A letter was received from the riverfront property owners indicating that they are not currently agreeable to the acquisition of right-of-way or an easement through their properties.

There are multiple materials available for this trail. Cost Estimates were developed for a gravel trail, asphalt trail, and an elevated trail through the floodplain. These cost estimates are in Appendix B.

This alignment is consistent with the Part 1 alignment requested in the scope of work. This trail could be feasible in the future.

### Alternate 2 Local Neighborhood Alignment

The Local Neighborhood Alignment (Dark Blue in Appendix A) gives bicyclist and pedestrians a route through the borough while keeping them off of Pittsburgh Street (SR 1001). One of the major concerns in the public surveys was a desire to be separated from traffic. While this alignment does not separate trail users from road users, a route was chosen that would minimize time spent along the busiest of the roadways within the borough. During the public meeting, many residents voiced opposition to this alignment due to a possible increase of trail users in their neighborhood and because of the construction of new sidewalks that would be necessary to accommodate pedestrians. This option is not currently recommended as the combined Bike and Pedestrian trail through Cheswick Borough. Without the ability to construct new sidewalks, this alignment cannot be the proposed route through the borough.

This alignment is consistent with the Part 2 alignment requested in the scope of work if the Riverfront Trail is able to be built in the future.

### Alternate 3 Business District/Neighborhood Alignment

The Business District/Neighborhood Alignment (Dark Blue and Light Blue in Appendix A) was developed after input from the public and steering committee. This alignment will still utilize the Dark Blue route proposed in the Local Neighborhood Alignment, however this route will only be designated for bicyclists. This will reduce the number of trail users within the neighborhoods while also keeping bicyclist off of the busiest roads in the borough. Pedestrians will be instructed to utilize the existing sidewalks along Pittsburgh Street (SR 1001). This will reduce the trail users in the neighborhoods while also funneling pedestrians into the Borough's Business District.

Construction of this proposed alternative will not involve the construction of new sidewalks. However there is the potential that many of the existing sidewalks along Pittsburgh Street (SR 1001) will require upgrades. Two cost estimates were developed with one anticipating significant sidewalk upgrades. The cost estimates are in Appendix B.

This alignment is consistent with the Part 2 alignment requested in the scope of work if the Riverfront Trail is able to be built in the future.

### Funding Sources

#### PennDOT Multimodal Transportation Fund

PennDOT Multimodal Transportation Funds are eligible for a full-range of multimodal improvements, acquisition of right-of-way, engineering, design, and construction inspection.

More information about this program can be found at PennDOT's website: [www.penndot.gov](http://www.penndot.gov).

#### PA DCED Multimodal Transportation Fund

The Multimodal Transportation Fund provides grants to encourage economic development and ensure that a safe and reliable system of transportation is available to the residents of the commonwealth. Funds may be used for the development, rehabilitation and enhance-



ment of transportation assets to existing communities, streetscape, lighting, sidewalk enhancement, pedestrian safety, connectivity of transportation assets and transit-oriented development.

More information about this program can be found at PA DCED's website: [www.dced.pa.gov](http://www.dced.pa.gov).

### **PA DCED Greenways, Trails, and Recreation Program**

Funds for planning, acquisition, development, rehabilitation and repair of greenways, recreational trails, open space, parks and beautification projects.

More information about this program can be found at PA DCED's website: [www.dced.pa.gov](http://www.dced.pa.gov).

### **PA DCNR Community Conservation Partnership Program**

The PA DCNR Community Conservation Partnership Program (C2P2) provides funding for communities and nonprofit organizations to acquire, plan and implement open space, conservation and recreation resources, including trails. DCNR accepts grant applications annually, with deadlines usually in April. Projects will receive additional consideration for using "green" technology or practices. DCNR funds can be used for most park projects, and as a match to many federal funds for some trails. DCNR requires a 50–50 match (cash or in kind services) to its grant awards. The first step is to contact the DCNR regional advisor.

More information on this program can be found at the DCNR website: [www.dcnr.state.pa.us/brc/](http://www.dcnr.state.pa.us/brc/)

### **Legislative Funding**

State and federal elected officials can sometimes include items into legislation for worthy projects in their districts. A conversation between county and municipal officials and legislators is the way to begin this process. This type of funding should be targeted toward capital improvement projects.

### **Private Foundations**

There may be regional corporations and foundations that support public works such as park/trail development. Competition for these funds is usually brisk, but opportunities should be researched. Funding is often to non-profit organizations.

Foundations and institutions represent another potential source of funding for education-related site improvements and programming. Grants are available to support student field trips, provide teacher training in science, and provide other educational opportunities. Education tied to research can increase the pool of potential funds. The science community and research institutions are the logical starting points for soliciting foundation funds.

### **Schools and Local Organizations**

Local schools and sports organizations may also be of assistance in several ways. These groups might get involved with club activities, fundraising events, and trail cleanup days. The school faculty might incorporate the trail into various curricula with students helping to develop and possibly maintain the trail as part of a classroom assignment or after school club. While the amount of funds raised may be relatively small, this process builds constituents and support that is critical to the long-term success of the trail.

APPENDIX A  
ALIGNMENT STUDY PLANS

DISTRICT	COUNTY	ROUTE	SECTION	SHEET
11-0	ALLEGHENY	-	-	1 OF 20
CHESWICK BOROUGH				
REVISION NUMBER	REVISIONS	DATE	BY	

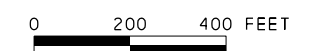


**LEGEND**

- INSTALLATION OF ADA COMPLIANT RAMPS
- PROPOSED TRAIL
- PROPOSED ALTERNATE PEDESTRIAN ROUTE
- PROPOSED ALTERNATE BIKE ROUTE
- SPRINGDALE TRAIL
- PROPOSED SIDEWALK
- PROPOSED SHARED USE TRAIL

**INDEX MAP**

**SCALE**



APPROX 1.1 MILES TO SR 1019

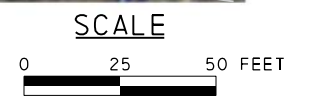
APPROX 0.8 MILES TO SR 0076

DISTRICT	COUNTY	ROUTE	SECTION	SHEET
11-0	ALLEGHENY	-	-	2 OF 20
CHESWICK BOROUGH				
REVISION NUMBER	REVISIONS	DATE	BY	



- LEGEND**
- INSTALLATION OF ADA COMPLIANT RAMPS
  - PROPOSED TRAIL PREFERRED TRAIL
  - PROPOSED ALTERNATE PEDESTRIAN ROUTE
  - PROPOSED ALTERNATE BIKE ROUTE
  - SPRINGDALE TRAIL
  - PROPOSED SIDEWALK
  - PROPOSED SHARED USE TRAIL

PROPOSED PREFERRED TRAIL 1 OF 6

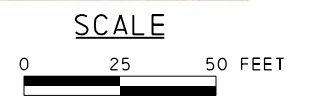


DISTRICT	COUNTY	ROUTE	SECTION	SHEET
11-0	ALLEGHENY	-	-	3 OF 20
CHESWICK BOROUGH				
REVISION NUMBER	REVISIONS	DATE	BY	



- LEGEND**
- INSTALLATION OF ADA COMPLIANT RAMPS
  - PROPOSED TRAIL PREFERRED TRAIL
  - PROPOSED ALTERNATE PEDESTRIAN ROUTE
  - PROPOSED ALTERNATE BIKE ROUTE
  - SPRINGDALE TRAIL
  - PROPOSED SIDEWALK
  - PROPOSED SHARED USE TRAIL

PROPOSED PREFERRED TRAIL 2 OF 6



DISTRICT	COUNTY	ROUTE	SECTION	SHEET
11-0	ALLEGHENY	-	-	4 OF 20
CHESWICK BOROUGH				
REVISION NUMBER	REVISIONS	DATE	BY	



**LEGEND**

- INSTALLATION OF ADA COMPLIANT RAMPS
- PROPOSED TRAIL PREFERRED TRAIL
- PROPOSED ALTERNATE PEDESTRIAN ROUTE
- PROPOSED ALTERNATE BIKE ROUTE
- SPRINGDALE TRAIL
- PROPOSED SIDEWALK
- PROPOSED SHARED USE TRAIL

PROPOSED PREFERRED TRAIL 3 OF 6

**SCALE**



DISTRICT	COUNTY	ROUTE	SECTION	SHEET
11-0	ALLEGHENY	-	-	5 OF 20
CHESWICK BOROUGH				
REVISION NUMBER	REVISIONS	DATE	BY	



**LEGEND**

- INSTALLATION OF ADA COMPLIANT RAMPS
- PROPOSED TRAIL PREFERRED TRAIL
- PROPOSED ALTERNATE PEDESTRIAN ROUTE
- PROPOSED ALTERNATE BIKE ROUTE
- SPRINGDALE TRAIL
- PROPOSED SIDEWALK
- PROPOSED SHARED USE TRAIL

ALLEGHENY RIVER

PROPOSED PREFERRED TRAIL 4 OF 6

SCALE

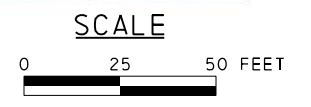


DISTRICT	COUNTY	ROUTE	SECTION	SHEET
11-0	ALLEGHENY	-	-	6 OF 20
CHESWICK BOROUGH				
REVISION NUMBER	REVISIONS	DATE	BY	



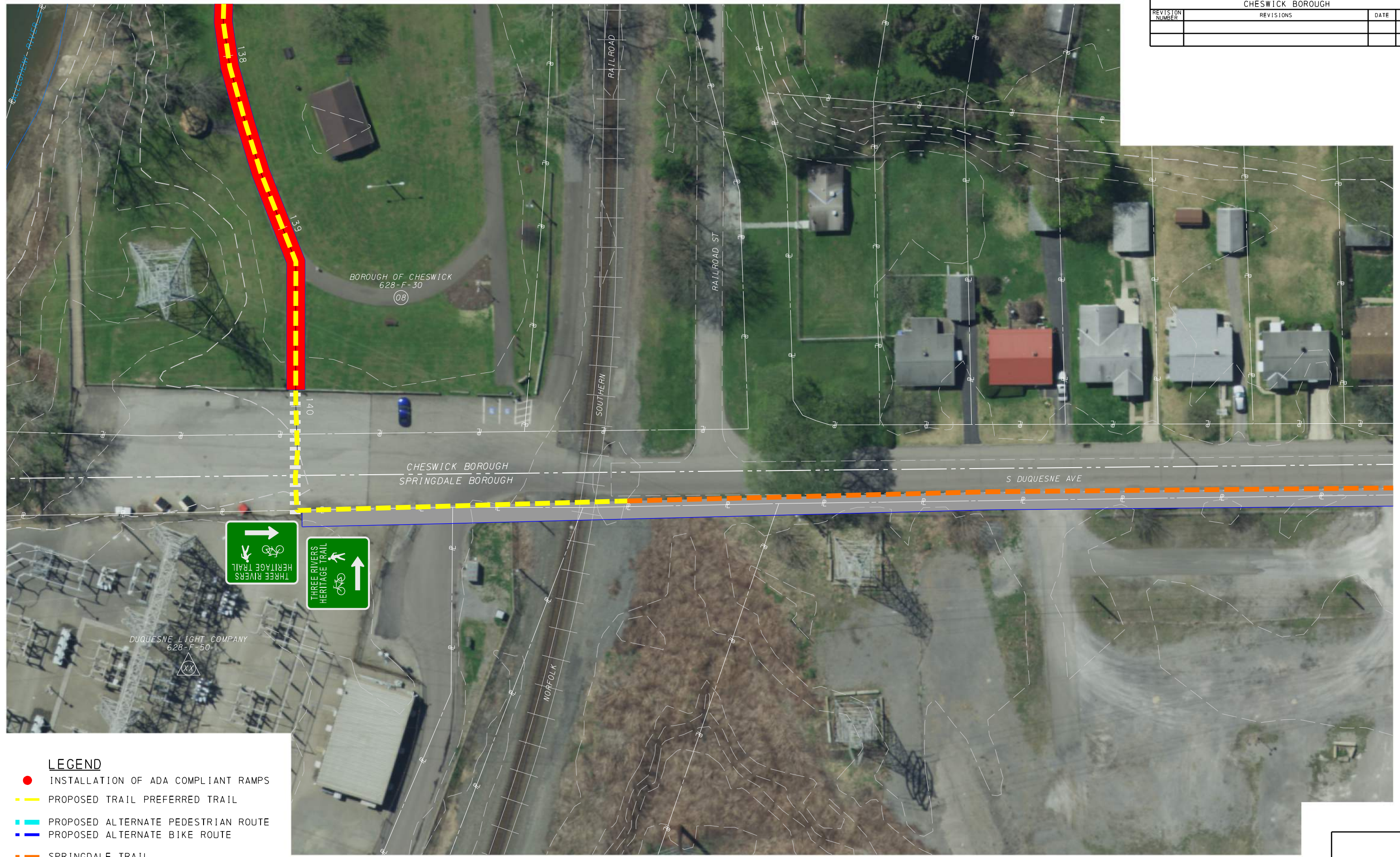
- LEGEND**
- INSTALLATION OF ADA COMPLIANT RAMPS
  - PROPOSED TRAIL PREFERRED TRAIL
  - PROPOSED ALTERNATE PEDESTRIAN ROUTE
  - PROPOSED ALTERNATE BIKE ROUTE
  - SPRINGDALE TRAIL
  - PROPOSED SIDEWALK
  - PROPOSED SHARED USE TRAIL

PROPOSED PREFERRED TRAIL 5 OF 6



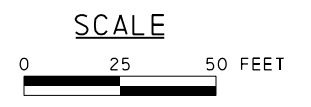


DISTRICT	COUNTY	ROUTE	SECTION	SHEET
11-0	ALLEGHENY	-	-	7 OF 20
CHESWICK BOROUGH				
REVISION NUMBER	REVISIONS	DATE	BY	



- LEGEND**
- INSTALLATION OF ADA COMPLIANT RAMPS
  - - - PROPOSED TRAIL PREFERRED TRAIL
  - - - PROPOSED ALTERNATE PEDESTRIAN ROUTE
  - - - PROPOSED ALTERNATE BIKE ROUTE
  - - - SPRINGDALE TRAIL
  - - - PROPOSED SIDEWALK
  - - - PROPOSED SHARED USE TRAIL

PROPOSED PREFERRED TRAIL 6 OF 6

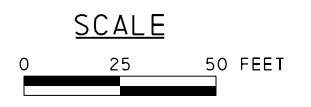


DISTRICT	COUNTY	ROUTE	SECTION	SHEET
11-0	ALLEGHENY	-	-	8 OF 20
CHESWICK BOROUGH				
REVISION NUMBER	REVISIONS	DATE	BY	



- LEGEND**
- INSTALLATION OF ADA COMPLIANT RAMPS
  - PROPOSED TRAIL PREFERRED TRAIL
  - PROPOSED ALTERNATE PEDESTRIAN ROUTE
  - PROPOSED ALTERNATE BIKE ROUTE
  - SPRINGDALE TRAIL
  - PROPOSED SIDEWALK
  - PROPOSED SHARED USE TRAIL

PROPOSED ALTERNATE BIKE ROUTE 1 OF 8



DISTRICT	COUNTY	ROUTE	SECTION	SHEET
11-0	ALLEGHENY	-	-	9 OF 20
CHESWICK BOROUGH				
REVISION NUMBER	REVISIONS	DATE	BY	

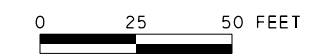


**LEGEND**

- INSTALLATION OF ADA COMPLIANT RAMPS
- PROPOSED TRAIL PREFERRED TRAIL
- PROPOSED ALTERNATE PEDESTRIAN ROUTE
- PROPOSED ALTERNATE BIKE ROUTE
- SPRINGDALE TRAIL
- PROPOSED SIDEWALK
- PROPOSED SHARED USE TRAIL

PROPOSED ALTERNATE BIKE ROUTE 2 OF 8

**SCALE**



DISTRICT	COUNTY	ROUTE	SECTION	SHEET
11-0	ALLEGHENY	-	-	10 OF 20
CHESWICK BOROUGH				
REVISION NUMBER	REVISIONS	DATE	BY	

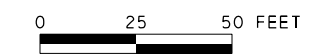


**LEGEND**

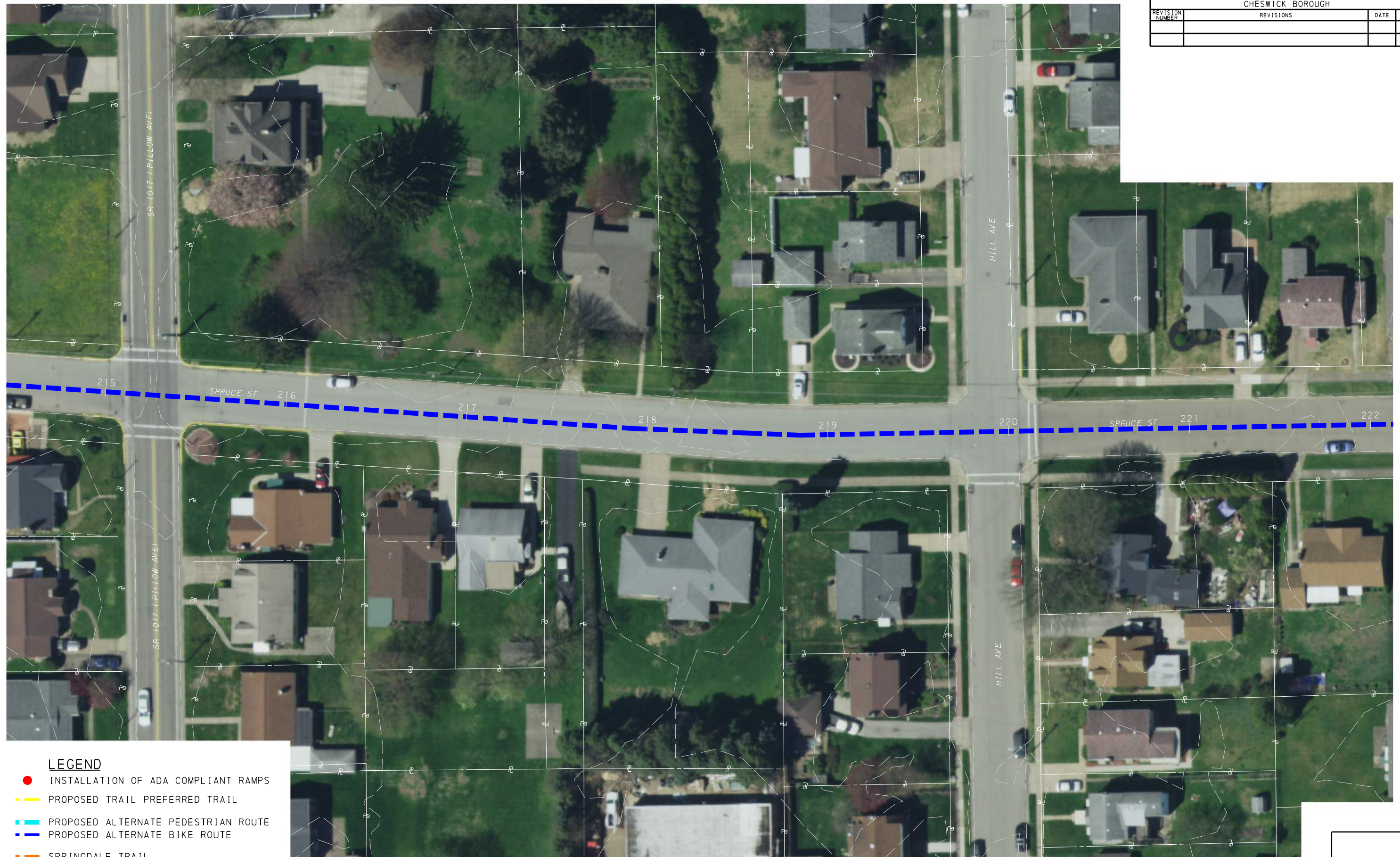
- INSTALLATION OF ADA COMPLIANT RAMP
- PROPOSED TRAIL PREFERRED TRAIL
- PROPOSED ALTERNATE PEDESTRIAN ROUTE
- - - PROPOSED ALTERNATE BIKE ROUTE
- SPRINGDALE TRAIL
- PROPOSED SIDEWALK
- PROPOSED SHARED USE TRAIL

PROPOSED ALTERNATE BIKE ROUTE 3 OF 8

SCALE



DISTRICT	COUNTY	ROUTE	SECTION	SHEET
11-0	ALLEGHENY	-	-	11 OF 20
CHESWICK BOROUGH				
REVISION NUMBER	REVISIONS	DATE	BY	



**LEGEND**

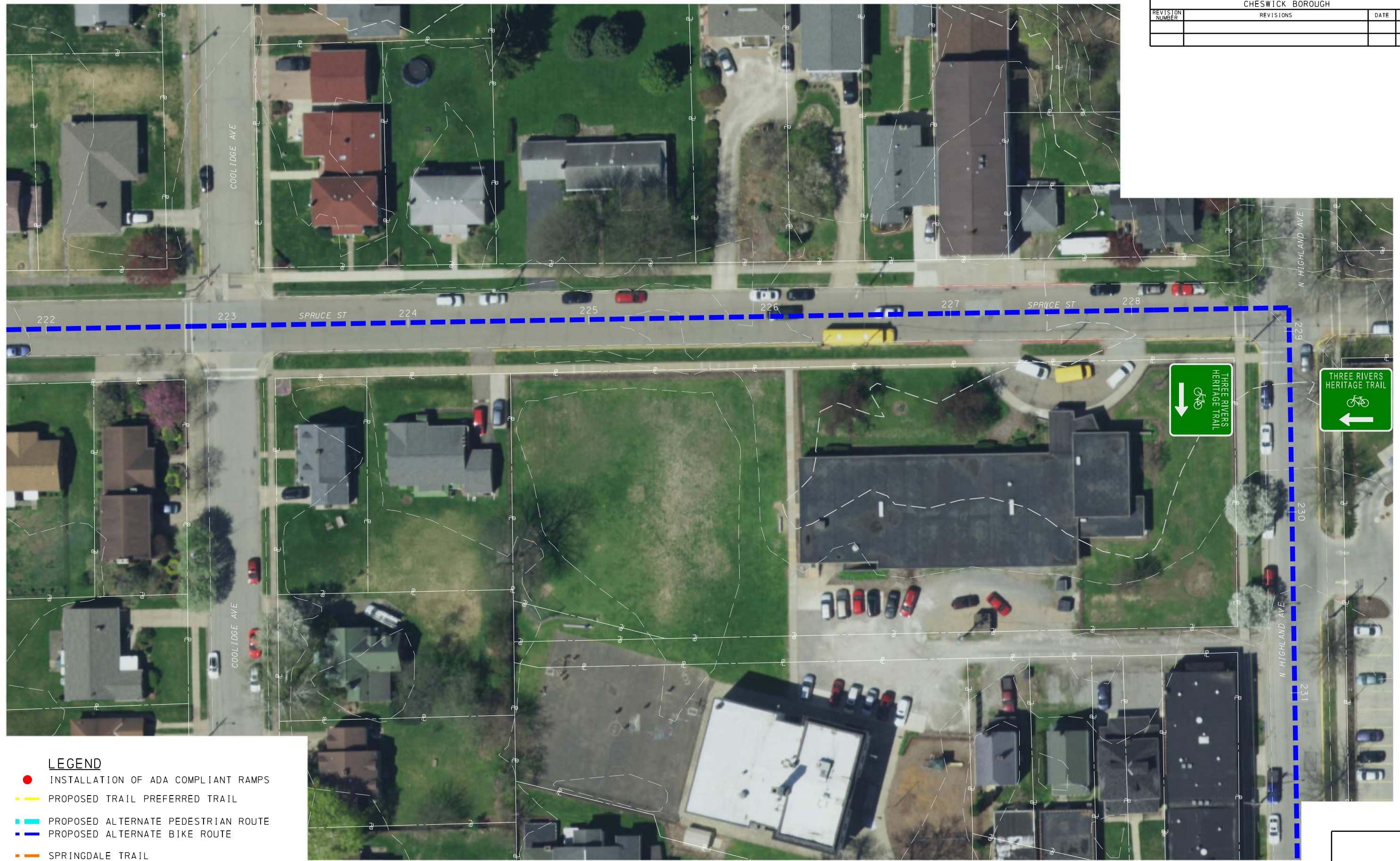
- INSTALLATION OF ADA COMPLIANT RAMPS
- PROPOSED TRAIL PREFERRED TRAIL
- PROPOSED ALTERNATE PEDESTRIAN ROUTE
- - - PROPOSED ALTERNATE BIKE ROUTE
- SPRINGDALE TRAIL
- PROPOSED SIDEWALK
- PROPOSED SHARED USE TRAIL

PROPOSED ALTERNATE BIKE ROUTE 4 OF 8

SCALE

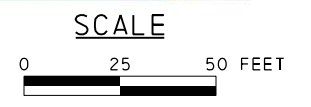


DISTRICT	COUNTY	ROUTE	SECTION	SHEET
11-0	ALLEGHENY	-	-	12 OF 20
CHESWICK BOROUGH				
REVISION NUMBER	REVISIONS	DATE	BY	



- LEGEND**
- INSTALLATION OF ADA COMPLIANT RAMPS
  - PROPOSED TRAIL PREFERRED TRAIL
  - PROPOSED ALTERNATE PEDESTRIAN ROUTE
  - - - PROPOSED ALTERNATE BIKE ROUTE
  - SPRINGDALE TRAIL
  - PROPOSED SIDEWALK
  - PROPOSED SHARED USE TRAIL

PROPOSED ALTERNATE BIKE ROUTE 5 OF 8

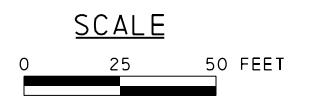


DISTRICT	COUNTY	ROUTE	SECTION	SHEET
11-0	ALLEGHENY	-	-	13 OF 20
CHESWICK BOROUGH				
REVISION NUMBER	REVISIONS	DATE	BY	

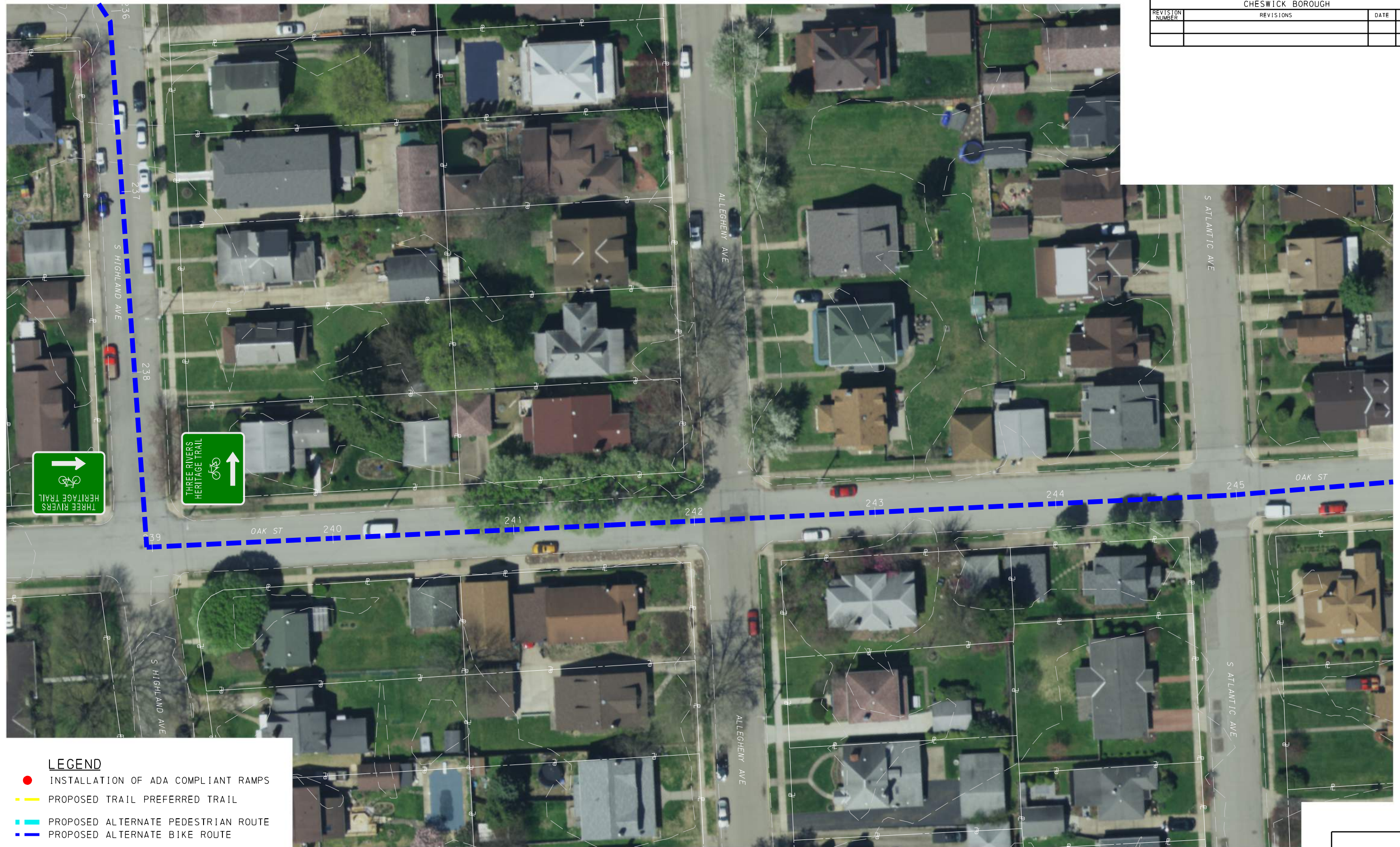


- LEGEND**
- INSTALLATION OF ADA COMPLIANT RAMPS
  - PROPOSED TRAIL PREFERRED TRAIL
  - PROPOSED ALTERNATE PEDESTRIAN ROUTE
  - PROPOSED ALTERNATE BIKE ROUTE
  - SPRINGDALE TRAIL
  - PROPOSED SIDEWALK
  - PROPOSED SHARED USE TRAIL

PROPOSED ALTERNATE BIKE ROUTE 6 OF 8



DISTRICT	COUNTY	ROUTE	SECTION	SHEET
11-0	ALLEGHENY	-	-	14 OF 20
CHESWICK BOROUGH				
REVISION NUMBER	REVISIONS	DATE	BY	



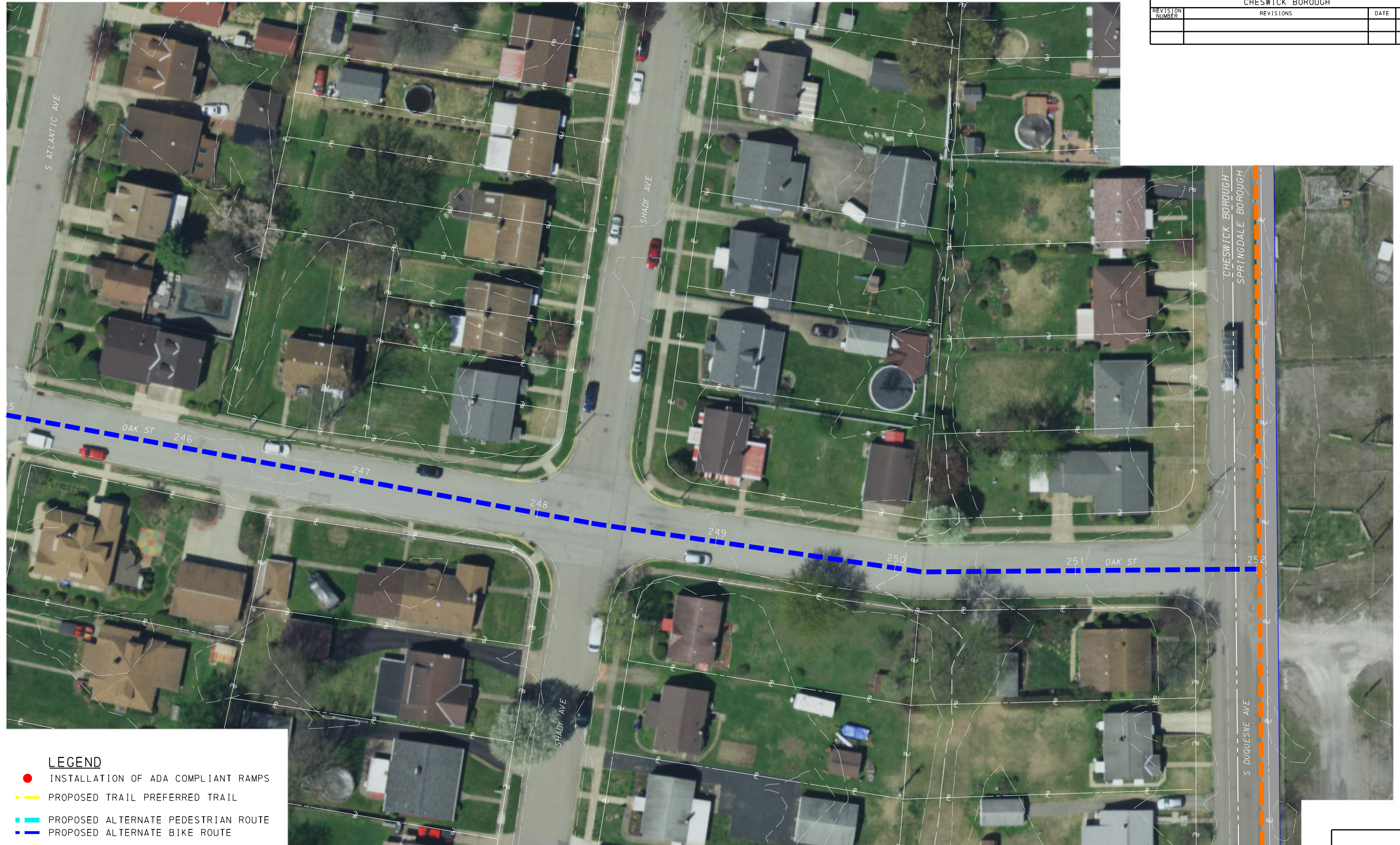
- LEGEND**
- INSTALLATION OF ADA COMPLIANT RAMPS
  - PROPOSED TRAIL PREFERRED TRAIL
  - PROPOSED ALTERNATE PEDESTRIAN ROUTE
  - - - PROPOSED ALTERNATE BIKE ROUTE
  - SPRINGDALE TRAIL
  - PROPOSED SIDEWALK
  - PROPOSED SHARED USE TRAIL

PROPOSED ALTERNATE BIKE ROUTE 7 OF 8





DISTRICT	COUNTY	ROUTE	SECTION	SHEET
11-0	ALLEGHENY	-	-	15 OF 20
CHESWICK BOROUGH				
REVISION NUMBER	REVISIONS	DATE	BY	



**LEGEND**

- INSTALLATION OF ADA COMPLIANT RAMPS
- PROPOSED TRAIL PREFERRED TRAIL
- PROPOSED ALTERNATE PEDESTRIAN ROUTE
- - - PROPOSED ALTERNATE BIKE ROUTE
- - - SPRINGDALE TRAIL
- PROPOSED SIDEWALK
- PROPOSED SHARED USE TRAIL

PROPOSED ALTERNATE BIKE ROUTE 8 OF 8

SCALE

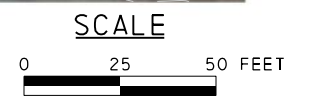


DISTRICT	COUNTY	ROUTE	SECTION	SHEET
11-0	ALLEGHENY	-	-	16 OF 20
CHESWICK BOROUGH				
REVISION NUMBER	REVISIONS	DATE	BY	



- LEGEND**
- INSTALLATION OF ADA COMPLIANT RAMPS
  - - - PROPOSED TRAIL PREFERRED TRAIL
  - - - PROPOSED ALTERNATE PEDESTRIAN ROUTE
  - - - PROPOSED ALTERNATE BIKE ROUTE
  - - - SPRINGDALE TRAIL
  - PROPOSED SIDEWALK
  - PROPOSED SHARED USE TRAIL

PROPOSED ALTERNATE PEDESTRIAN ROUTE 1 OF 5



DISTRICT	COUNTY	ROUTE	SECTION	SHEET
11-0	ALLEGHENY	-	-	17 OF 20
CHESWICK BOROUGH				
REVISION NUMBER	REVISIONS	DATE	BY	



**LEGEND**

- INSTALLATION OF ADA COMPLIANT RAMPS
- PROPOSED TRAIL PREFERRED TRAIL
- PROPOSED ALTERNATE PEDESTRIAN ROUTE
- PROPOSED ALTERNATE BIKE ROUTE
- SPRINGDALE TRAIL
- PROPOSED SIDEWALK
- PROPOSED SHARED USE TRAIL

PROPOSED ALTERNATE PEDESTRIAN ROUTE 2 OF 5

SCALE

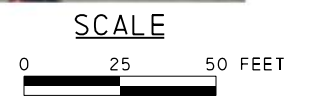


DISTRICT	COUNTY	ROUTE	SECTION	SHEET
11-0	ALLEGHENY	-	-	18 OF 20
CHESWICK BOROUGH				
REVISION NUMBER	REVISIONS	DATE	BY	

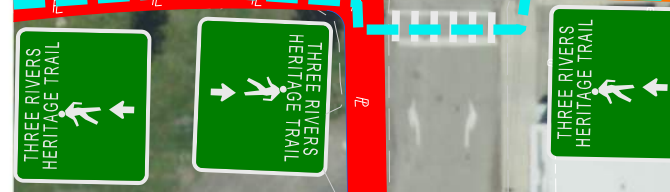
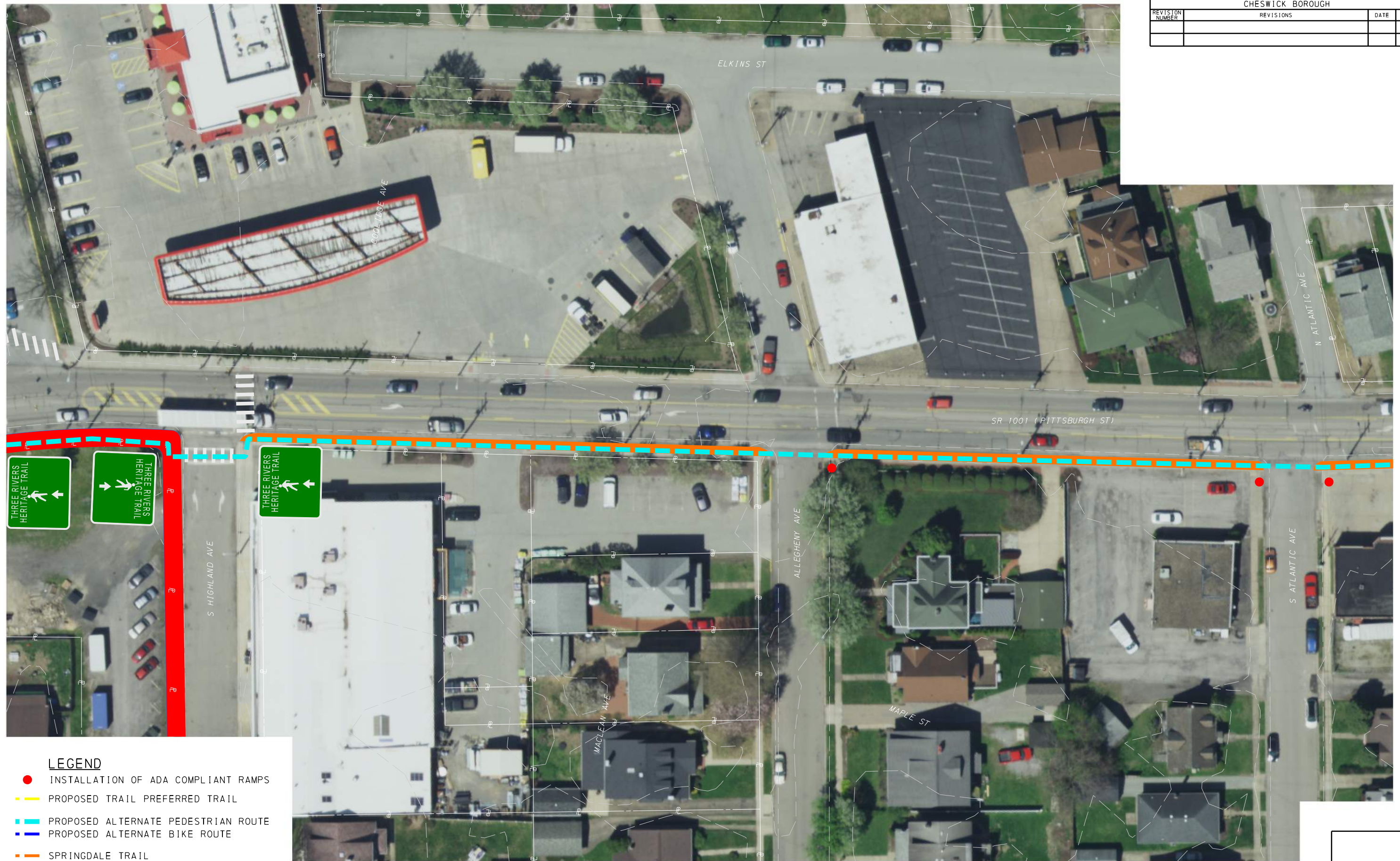


- LEGEND**
- INSTALLATION OF ADA COMPLIANT RAMPS
  - PROPOSED TRAIL PREFERRED TRAIL
  - - - PROPOSED ALTERNATE PEDESTRIAN ROUTE
  - - - PROPOSED ALTERNATE BIKE ROUTE
  - SPRINGDALE TRAIL
  - PROPOSED SIDEWALK
  - PROPOSED SHARED USE TRAIL

PROPOSED ALTERNATE PEDESTRIAN ROUTE 3 OF 5

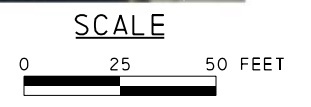


DISTRICT	COUNTY	ROUTE	SECTION	SHEET
11-0	ALLEGHENY	-	-	19 OF 20
CHESWICK BOROUGH				
REVISION NUMBER	REVISIONS	DATE	BY	

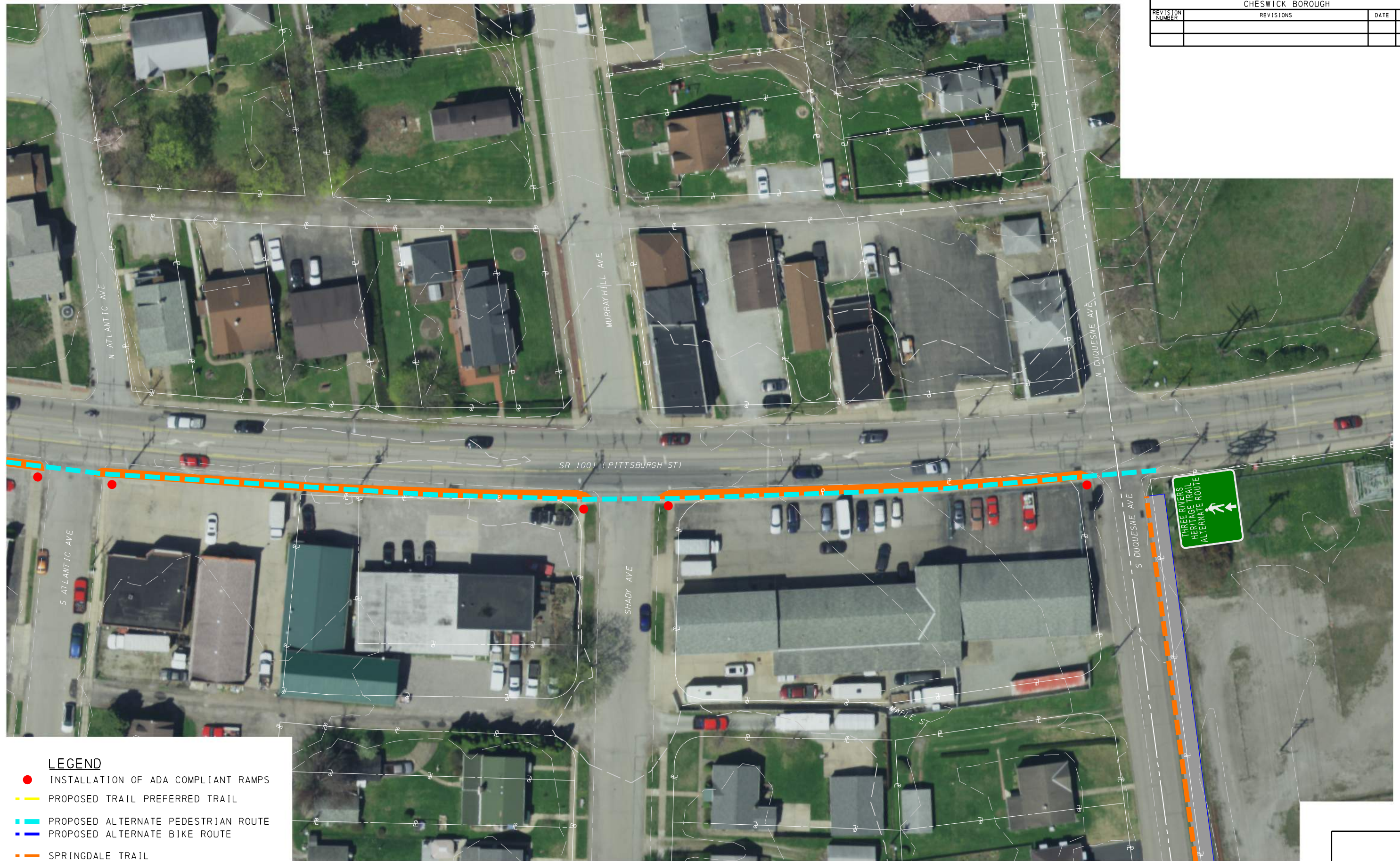


- LEGEND**
- INSTALLATION OF ADA COMPLIANT RAMPS
  - PROPOSED TRAIL PREFERRED TRAIL
  - PROPOSED ALTERNATE PEDESTRIAN ROUTE
  - PROPOSED ALTERNATE BIKE ROUTE
  - SPRINGDALE TRAIL
  - PROPOSED SIDEWALK
  - PROPOSED SHARED USE TRAIL

PROPOSED ALTERNATE PEDESTRIAN ROUTE 4 OF 5



DISTRICT	COUNTY	ROUTE	SECTION	SHEET
11-0	ALLEGHENY	-	-	20 OF 20
CHESWICK BOROUGH				
REVISION NUMBER	REVISIONS	DATE	BY	



**LEGEND**

- INSTALLATION OF ADA COMPLIANT RAMPS
- PROPOSED TRAIL PREFERRED TRAIL
- PROPOSED ALTERNATE PEDESTRIAN ROUTE
- PROPOSED ALTERNATE BIKE ROUTE
- SPRINGDALE TRAIL
- PROPOSED SIDEWALK
- PROPOSED SHARED USE TRAIL

**PROPOSED ALTERNATE PEDESTRIAN ROUTE 5 OF 5**

**SCALE**



APPENDIX B  
COST ESTIMATES







Client: Cheswick  
 Project: Three Rivers Heritage Trail  
 GT No.:  
 Subject: Riverfront Trail Alignment (Asphalt)

Made By: RSS  
 Date: 4/18/2023  
 Checked By: DPK  
 Date: 4/18/2023

**12' Wide Asphalt Trail**

ITEM NO.	ITEM DESCRIPTION	QUANTITY	UNIT	UNIT COST	TOTAL COST
0203-0001	CLASS 1 EXCAVATION	2147	CY	\$ 15.00	\$ 32,200.00
02120014	GEOTEXTILE, CLASS 4, TYPE A	5600	SY	\$ 3.00	\$ 16,800.00
0350-0106	SUBBASE 6" DEPTH (NO 2A)	5600	SY	\$ 20.00	\$ 112,000.00
0313-0022	SUPERPAVE ASPHALT MIXTURE DESIGN, BASE COURSE, PG 58S-28, < 0.3 MILLION ESALS, 25.0 MM MIX, 4" DEPTH	5600	SY	\$ 35.00	\$ 196,000.00
0413-0021	SUPERPAVE ASPHALT MIXTURE DESIGN, WEARING COURSE, PG 58S-28, < 0.3 MILLION ESALS, 12.5 MM MIX, 2" DEPTH, SRL-H	5600	SY	\$ 20.00	\$ 112,000.00
<b>TOTAL</b>					<b>\$ 469,000.00</b>

**Additional Pay Items**

ITEM NO.	ITEM DESCRIPTION	QUANTITY	UNIT	UNIT COST	TOTAL COST
0201-0001	CLEARING AND GRUBBING	1	LS	\$ 15,000.00	\$ 15,000.00
0608-0001	MOBILIZATION	1	LS	\$ 5,000.00	\$ 5,000.00
	DRAINAGE (10%)	1	LS	\$ 46,900.00	\$ 46,900.00
	E&S (10%)	1	LS	\$ 46,900.00	\$ 46,900.00
	TRAIL LANDSCAPING AND SIGNING	1	LS	\$ 5,000.00	\$ 5,000.00

**SUBTOTAL = \$ 587,800.00**

10% CONTINGENCY 1 LS \$ 58,780.00 \$ 58,780.00

**CONSTRUCTION TOTAL = \$ 646,580.00**

CONSTRUCTION INSPECTION AND CONSULTATION TOTAL (10%) = \$ 64,658.00

**TOTAL = \$ 711,238.00**







Client: Cheswick  
 Project: Three Rivers Heritage Trail  
 GT No.:  
 Subject: Business District/Neighborhood Alignment  
 (Without Sidewalk Reconstruction)

Made By: RSS  
 Date: 4/18/2023  
 Checked By: DPK  
 Date: 4/18/2023

**Alternate Bike Route**

ITEM NO.	ITEM DESCRIPTION	QUANTITY	UNIT	UNIT COST	TOTAL COST
0203-0004	CLASS 1B EXCAVATION	178	CY	\$ 16.00	\$ 2,844.44
02120014	GEOTEXTILE, CLASS 4, TYPE A	533	SY	\$ 3.00	\$ 1,600.00
0350-0106	SUBBASE 6" DEPTH (NO 2A)	533	SY	\$ 20.00	\$ 10,666.67
0313-0022	SUPERPAVE ASPHALT MIXTURE DESIGN, BASE COURSE, PG 58S-28, < 0.3 MILLION ESALS, 25.0 MM MIX, 4" DEPTH	533	SY	\$ 35.00	\$ 18,666.67
0413-0021	SUPERPAVE ASPHALT MIXTURE DESIGN, WEARING COURSE, PG 58S-28, < 0.3 MILLION ESALS, 12.5 MM MIX, 2" DEPTH, SRL-H	533	SY	\$ 20.00	\$ 10,666.67
				<b>TOTAL</b>	<b>\$ 44,444.44</b>

**Individual Pay Items**

ITEM NO.	ITEM DESCRIPTION	QUANTITY	UNIT	UNIT COST	TOTAL COST
0201-0001	CLEARING AND GRUBBING	1	LS	\$ 1,000.00	\$ 1,000.00
0608-0001	MOBILIZATION	1	LS	\$ 5,000.00	\$ 5,000.00
	DRAINAGE	1	LS	\$ 5,000.00	\$ 5,000.00
	E&S	1	LS	\$ 5,000.00	\$ 5,000.00
	MAINTENANCE AND PROTECTION OF TRAFFIC	1	LS	\$ 10,000.00	\$ 10,000.00
	SIGNING	1	LS	\$ 5,000.00	\$ 5,000.00
	PAVEMENT MARKINGS	1	LS	\$ 5,000.00	\$ 5,000.00
	TRAIL LANDSCAPING AND SIGNING	1	LS	\$ 2,500.00	\$ 2,500.00

**SUBTOTAL = \$ 82,944.44**

10% CONTINGENCY 1 LS \$ 8,294.44 \$ 8,294.44

**CONSTRUCTION TOTAL = \$ 91,238.89**

CONSTRUCTION INSPECTION AND CONSULTATION TOTAL (10%) = \$ 9,123.89

**TOTAL = \$ 100,362.78**

APPENDIX C  
PUBLIC INVOLVEMENT

DISTRICT	COUNTY	ROUTE	SECTION	SHEET
11-0	ALLEGHENY	-	-	
CHESWICK BOROUGH				
REVISION NUMBER	REVISIONS	DATE	BY	

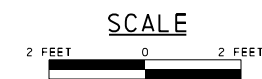
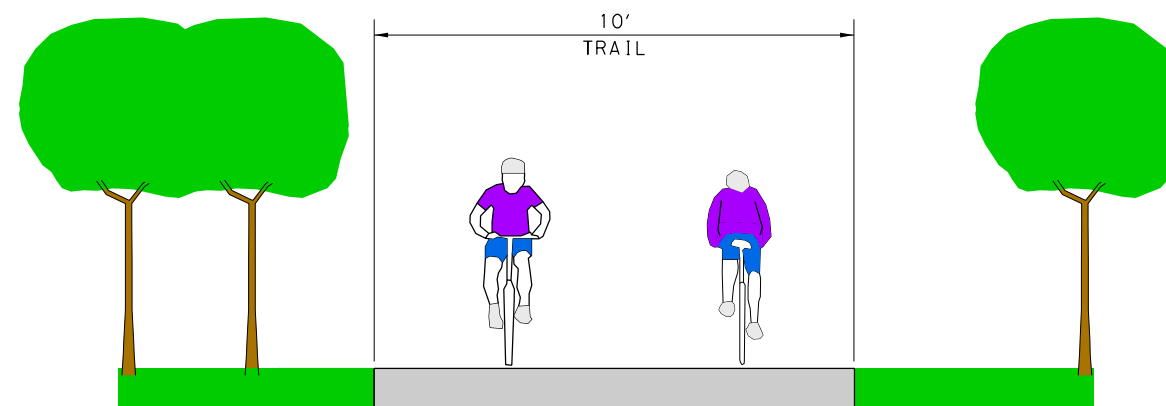


**LEGEND**

- PROPOSED TRAIL
  - PROPOSED TRAIL ALTERNATE ROUTE
  - PROPOSED SIDEWALK
  - PROPOSED SHARED USE TRAIL
  - INSTALLATION OF ADA COMPLIANT RAMPS
  - SPRINGDALE TRAIL
- TOTAL LENGTH OF LOOP = 9900 FT (1.9 MILES)

**INDEX MAP**





PROJECT: THREE RIVERS HERITAGE TRAIL  
BOROUGH OF CHESWICK ALLEGHENY COUNTY

TITLE: TRAIL

FIGURE - 2



First Online Public Survey  
June through September 2022

Timestamp	How often has someone from your household visited each of these trails in the past year? Please use a check mark to indicate the typical frequency of your visits to each trail. [Three Rivers Heritage Trail]	How often has someone from your household visited each of these trails in the past year? Please use a check mark to indicate the typical frequency of your visits to each trail. [Armstrong Trail]	How often has someone from your household visited each of these trails in the past year? Please use a check mark to indicate the typical frequency of your visits to each trail. [Erie to Pittsburgh]	How often has someone from your household visited each of these trails in the past year? Please use a check mark to indicate the typical frequency of your visits to each trail. [Greater Allegheny Passage (GAP)]	How often has someone from your household visited each of these trails in the past year? Please use a check mark to indicate the typical frequency of your visits to each trail. [Butler Freepoint Trail]	Think about the times you or someone in your household visited the trails listed above. What was your primary method of transportation to the trailhead?	What would your primary use of the Three Rivers Heritage Trail be?	What types of activities would you use the Three Rivers Heritage Trail for? Check all that apply.	If you would use the trail for biking, please check the boxes that describe your group.	Please indicate your interest level in multi-day trail trips.
6/17/2022 13:22:50	Annual	Annual	I have never heard of this trail	Annual	Weekly	Bike	Exercise	Biking, single-day trip	With others	I have never taken a multi-day trip, and I do not plan to.
6/17/2022 13:28:36	Weekly	Annual	I have never heard of this trail	Monthly	Annual	Bike	Recreation	Walking/running, Biking, single-day trip	Solo	I take multi-day trips once or twice a year.
6/17/2022 13:45:02	Weekly	Monthly	Monthly	Monthly	Monthly	Drive	Exercise	Biking, single-day trip, Biking, multi-day trip	Solo, With others	I take multi-day trips once or twice a year.
6/17/2022 15:35:58	Weekly	Annual	Never	Weekly	Annual	Drive	Exercise	Biking, single-day trip	Solo, With others	I have never taken a multi-day trip, and I do not plan to.
6/17/2022 15:45:39	Annual	Annual	Never	Annual	Annual	Bike	Recreation	Fishing, Biking, single-day trip	With others	I have never taken a multi-day trip, and I do not plan to.
6/17/2022 16:04:54	Monthly	Never	Never	Monthly	Never	Drive	Exercise	Walking/running, Biking, single-day trip	Solo, With others	I have never taken a multi-day trip, but I would like to.
6/17/2022 17:22:02	Weekly	Never	Never	Weekly	Never	Bike	Recreation	Walking/running, Dog walking, Biking, single-day trip, Biking, multi-day trip	Solo, With others	I have never taken a multi-day trip, but I would like to.
6/17/2022 17:37:45	Monthly	Monthly	I have never heard of this trail	Monthly	Monthly	Drive	Exercise	Biking, single-day trip, Cross country skiing	Solo	I take multi-day trips once or twice a year.
6/18/2022 7:23:58	Monthly	Annual	Never	Annual	Annual	Drive	Exercise	Walking/running, Biking, single-day trip	Solo, With others	I take multi-day trips once or twice a year.
6/18/2022 7:51:51	Weekly	Never	Monthly	Annual	Annual	Bike	Recreation	Walking/running, Rollerblading, scootering, skateboarding, etc., Biking, single-day trip, Cross country skiing	With others	I take multi-day trips once or twice a year.
6/18/2022 8:03:53	Monthly	Never	Never	Monthly	Never	Bike	Transportation	Biking, single-day trip, Cross country skiing	Solo	I have never taken a multi-day trip, but I would like to.
6/18/2022 9:09:40	Weekly	Monthly	Annual	Annual	Monthly	Bike	Recreation	Biking, single-day trip	With others	I have never taken a multi-day trip, but I would like to.
6/18/2022 9:53:29	Monthly	Weekly	Weekly	Monthly	Monthly	Drive	Recreation	Biking, single-day trip, Biking, multi-day trip	Solo, With others	I take multi-day trips once or twice a year.
6/18/2022 10:55:39	Annual	Annual	Never	Annual	Weekly	Drive	Exercise	Walking/running, Biking, single-day trip	Solo, With others	I have never taken a multi-day trip, but I would like to.
6/20/2022 11:19:20	Monthly	Annual	Never	Never	Annual	Drive	Recreation	Walking/running	Solo, With others	I have never taken a multi-day trip, and I do not plan to.
6/21/2022 12:09:09	Annual	Annual	Annual	Annual	Weekly	Drive	Recreation	Biking, single-day trip	Solo	I take multi-day trips once or twice a year.
6/24/2022 15:46:27	Monthly	Monthly	Annual	Annual	Monthly	Drive	Recreation	Walking/running, Biking, single-day trip, Biking, multi-day trip	With others	I take multi-day trips once or twice a year.



Timestamp	How often has someone from your household visited each of these trails in the past year? Please use a check mark to indicate the typical frequency of your visits to each trail. [Three Rivers Heritage Trail]	How often has someone from your household visited each of these trails in the past year? Please use a check mark to indicate the typical frequency of your visits to each trail. [Armstrong Trail]	How often has someone from your household visited each of these trails in the past year? Please use a check mark to indicate the typical frequency of your visits to each trail. [Erie to Pittsburgh]	How often has someone from your household visited each of these trails in the past year? Please use a check mark to indicate the typical frequency of your visits to each trail. [Greater Allegheny Passage (GAP)]	How often has someone from your household visited each of these trails in the past year? Please use a check mark to indicate the typical frequency of your visits to each trail. [Butler Freepoint Trail]	Think about the times you or someone in your household visited the trails listed above. What was your primary method of transportation to the trailhead?	What would your primary use of the Three Rivers Heritage Trail be?	What types of activities would you use the Three Rivers Heritage Trail for? Check all that apply.	If you would use the trail for biking, please check the boxes that describe your group.	Please indicate your interest level in multi-day trail trips.
7/1/2022 10:11:00	Weekly	I have never heard of this trail	Never	Weekly	Never	Bike	Recreation	Walking/running, Rollerblading, scootering, skateboarding, etc., Biking, single-day trip, Biking, multi-day trip	Solo, With others, With a child carrier	I take multi-day trips once or twice a year.
7/1/2022 10:20:34	Monthly	Never	Never	Monthly	Annual	Bike	Transportation	Walking/running, Fishing, Biking, single-day trip, Cross country skiing	Solo, With a children's trailer bike, With a child carrier	I take multi-day trips once or twice a year.
7/1/2022 10:24:53	Weekly	Monthly	Monthly	Weekly	Monthly	Drive	Recreation	Walking/running, Biking, single-day trip, Biking, multi-day trip, Other	Solo, With others	I have never taken a multi-day trip, but I would like to.
7/1/2022 10:45:22	Weekly	Monthly	Annual	Monthly, Annual	Annual	Drive	Exercise	Walking/running, Dog walking, Biking, single-day trip, Biking, multi-day trip	With others	I take multi-day trips once or twice a year.
7/1/2022 13:31:42	Weekly	Weekly	Weekly	Weekly	Weekly	Bike	Transportation	Biking, single-day trip, Biking, multi-day trip	Solo, With others	I have never taken a multi-day trip, but I would like to.
7/1/2022 14:05:41	Weekly	Never	Annual	Weekly	Annual	Bike	Exercise	Biking, single-day trip, Biking, multi-day trip	Solo, With others	I take multi-day trips once or twice a year.
7/1/2022 14:24:17	Monthly	Annual	Never	Never	Never	Bike	Recreation	Walking/running, Biking, single-day trip	Solo, With others	I have never taken a multi-day trip, but I would like to.
7/1/2022 14:34:53	Weekly	Monthly	Annual	Weekly	Monthly	Bike	Transportation	Walking/running, Using a mobility accessibility device, Dog walking, Biking, single-day trip, Biking, multi-day trip	Solo, With others, With a children's trailer bike, With a child carrier	I take multi-day trips once or twice a year.
7/1/2022 14:40:12	Weekly	Annual	Annual	Weekly	Annual	Bike to close ones, Drive to far ones	Exercise	Walking/running, Biking, single-day trip	Solo, With others, With a children's trailer bike	I take multi-day trips once or twice a year.
7/1/2022 14:44:36	Weekly	I have never heard of this trail	Never	Weekly	Annual	Drive	Exercise	Walking/running, Dog walking, Biking, single-day trip	Solo, With others	I have never taken a multi-day trip, but I would like to.
7/1/2022 14:46:16	Weekly	Never	Annual	Weekly	Annual	Bike	Recreation	Biking, single-day trip, Biking, multi-day trip	Solo, With others	I take multi-day trips once or twice a year.
7/1/2022 16:09:04	Weekly	I have never heard of this trail	I have never heard of this trail	Annual	Annual	Bike	Transportation	Biking, single-day trip, Biking, multi-day trip	Solo, With others	I have never taken a multi-day trip, but I would like to.
7/1/2022 16:12:08	Weekly	Never	Never	Annual	Never	Drive	Recreation	Walking/running, Biking, single-day trip, Biking, multi-day trip	With others	I take multi-day trips once or twice a year.
7/2/2022 10:36:02	Weekly	Never	Never	Weekly	I have never heard of this trail	Bike	Exercise	Walking/running, Biking, single-day trip	With others	I have never taken a multi-day trip, but I would like to.
7/9/2022 16:16:37	Annual	Never	Never	Annual	Monthly	Drive	Recreation	Walking/running, Biking, single-day trip	With others	I have never taken a multi-day trip, but I would like to.
7/10/2022 9:32:32	Weekly	Never	Never	Monthly	Never	Drive	Recreation	Walking/running, Fishing, Biking, single-day trip, Biking, multi-day trip, Cross country skiing	Solo, With others	I take multi-day trips once or twice a year.
7/12/2022 12:00:27	Weekly	Never	Never	Weekly	Weekly	Bike	Exercise	Biking, single-day trip	Solo, With others	I have never taken a multi-day trip, and I do not plan to.

Timestamp	How often has someone from your household visited each of these trails in the past year? Please use a check mark to indicate the typical frequency of your visits to each trail. [Three Rivers Heritage Trail]	How often has someone from your household visited each of these trails in the past year? Please use a check mark to indicate the typical frequency of your visits to each trail. [Armstrong Trail]	How often has someone from your household visited each of these trails in the past year? Please use a check mark to indicate the typical frequency of your visits to each trail. [Erie to Pittsburgh]	How often has someone from your household visited each of these trails in the past year? Please use a check mark to indicate the typical frequency of your visits to each trail. [Greater Allegheny Passage (GAP)]	How often has someone from your household visited each of these trails in the past year? Please use a check mark to indicate the typical frequency of your visits to each trail. [Butler Freeport Trail]	Think about the times you or someone in your household visited the trails listed above. What was your primary method of transportation to the trailhead?	What would your primary use of the Three Rivers Heritage Trail be?	What types of activities would you use the Three Rivers Heritage Trail for? Check all that apply.	If you would use the trail for biking, please check the boxes that describe your group.	Please indicate your interest level in multi-day trail trips.
7/12/2022 18:47:46	Annual	Annual	Annual	Annual	Monthly	Walk	Exercise	Walking/running, Rollerblading, scootering, skateboarding, etc., Dog walking, Biking, single-day trip	Solo, With others, With a children's trailer bike, With a child carrier	I have never taken a multi-day trip, but I would like to.
7/12/2022 19:19:30	Monthly	Never	Annual	Annual	Monthly	Drive	Exercise	Walking/running, Dog walking	With others, With a child carrier	I have never taken a multi-day trip, but I would like to.
7/12/2022 19:26:22	Never	Never	Never	Annual	Annual	Bike	Recreation	Fishing, Biking, single-day trip, Biking, multi-day trip	With others	I take multi-day trips more than five times a year.
7/12/2022 19:37:58	Monthly	Never	Annual	Annual	Monthly	Drive	Exercise	Walking/running, Dog walking, Biking, single-day trip	Solo, With others, With a children's trailer bike, With a child carrier	I have never taken a multi-day trip, but I would like to.
7/12/2022 19:43:28	Annual	Never	Never	Annual	Annual	Drive	Recreation	Walking/running, Fishing, Biking, single-day trip	Solo, With others	I have never taken a multi-day trip, but I would like to.
7/12/2022 19:58:13	I have never heard of this trail	Monthly	Never	Annual	Monthly	Drive	Exercise	Walking/running, Dog walking, Biking, single-day trip	Solo, With others	I have never taken a multi-day trip, but I would like to.
7/12/2022 20:03:32	Annual	Never	Never	Annual	Annual	Bike	Recreation	Walking/running, Dog walking, Biking, single-day trip	Solo, With others	I have never taken a multi-day trip, but I would like to.
7/12/2022 20:13:02	Never	Never	I have never heard of this trail	I have never heard of this trail	Never	Drive	Recreation	Walking/running, Biking, single-day trip	Solo	I have never taken a multi-day trip, but I would like to.
7/12/2022 20:14:32	Annual	Annual	Annual	Annual	Annual	Walk	Recreation	Walking/running, Rollerblading, scootering, skateboarding, etc., Dog walking, Fishing, Biking, single-day trip	With others, With a child carrier	I have never taken a multi-day trip, and I do not plan to.
7/12/2022 20:36:30	Never	Never	Never	Never	Never	Walk	Recreation	Fishing, Biking, single-day trip	Solo, With others	I have never taken a multi-day trip, and I do not plan to.
7/12/2022 20:41:10	Never	Annual	Annual	Never	Annual	Drive	Exercise	Using a mobility accessibility device, Dog walking	With others	I have never taken a multi-day trip, and I do not plan to.
7/12/2022 20:51:23	Monthly	Annual	Never	Monthly	Monthly	Bike	Exercise	Biking, single-day trip, Biking, multi-day trip	Solo, With others	I have never taken a multi-day trip, but I would like to.
7/12/2022 21:35:36	Annual	Annual	Never	Monthly	Weekly	Bike	Exercise	Walking/running, Biking, single-day trip, Biking, multi-day trip	Solo, With others	I have never taken a multi-day trip, but I would like to.
7/12/2022 22:55:39	Never	Never	Never	Never	Never	Drive	Recreation	Walking/running, Dog walking, Biking, single-day trip, Biking, multi-day trip	With others	I have never taken a multi-day trip, and I do not plan to.
7/12/2022 23:02:29	Annual	Never	Never	Never	Never	Drive	Exercise	Walking/running, Stationery	With others	I have never taken a multi-day trip, but I would like to.
7/12/2022 23:41:49	Never	Never	Never	Never	Annual	Drive	Exercise	Walking/running, Dog walking, Biking, single-day trip	With others	I have never taken a multi-day trip, and I do not plan to.
7/12/2022 23:46:40	Annual	Never	Never	Annual	Annual	Drive	Recreation	Walking/running, Fishing, Biking, single-day trip	Solo, With others, With a children's trailer bike, With a child carrier	I have never taken a multi-day trip, but I would like to.

Timestamp	How often has someone from your household visited each of these trails in the past year? Please use a check mark to indicate the typical frequency of your visits to each trail. [Three Rivers Heritage Trail]	How often has someone from your household visited each of these trails in the past year? Please use a check mark to indicate the typical frequency of your visits to each trail. [Armstrong Trail]	How often has someone from your household visited each of these trails in the past year? Please use a check mark to indicate the typical frequency of your visits to each trail. [Erie to Pittsburgh]	How often has someone from your household visited each of these trails in the past year? Please use a check mark to indicate the typical frequency of your visits to each trail. [Greater Allegheny Passage (GAP)]	How often has someone from your household visited each of these trails in the past year? Please use a check mark to indicate the typical frequency of your visits to each trail. [Butler Freeport Trail]	Think about the times you or someone in your household visited the trails listed above. What was your primary method of transportation to the trailhead?	What would your primary use of the Three Rivers Heritage Trail be?	What types of activities would you use the Three Rivers Heritage Trail for? Check all that apply.	If you would use the trail for biking, please check the boxes that describe your group.	Please indicate your interest level in multi-day trail trips.
7/13/2022 0:16:54	Never	Never	Never	Never	Annual	Drive	Exercise	Walking/running, Biking, single-day trip	Solo, With others	I have never taken a multi-day trip, but I would like to.
7/13/2022 2:21:51	Never	Never	Never	Never	Never	Bike	Recreation	Walking/running, Biking, single-day trip, Other	With others, With a child carrier	I have never taken a multi-day trip, but I would like to.
7/13/2022 11:06:50	I have never heard of this trail	I have never heard of this trail	I have never heard of this trail	I have never heard of this trail	I have never heard of this trail	Na	Recreation	Walking/running, Biking, single-day trip, Biking, multi-day trip, Other	Solo, With others	I have never taken a multi-day trip, but I would like to.
7/13/2022 16:51:39	Weekly	Annual	Monthly	Monthly	Annual	Drive	Transportation	Walking/running, Rollerblading, scootering, skateboarding, etc., Biking, single-day trip	Solo, With others	I have never taken a multi-day trip, but I would like to.
7/14/2022 6:26:32	Weekly	Never	Never	Never	Never	Drive	Recreation	Walking/running, Rollerblading, scootering, skateboarding, etc., Biking, single-day trip	With others	I have never taken a multi-day trip, but I would like to.
7/15/2022 16:12:51	Never, I have never heard of this trail	Never, I have never heard of this trail	Never, I have never heard of this trail	Never, I have never heard of this trail	Never, I have never heard of this trail	Drive	Exercise	Walking/running, Biking, single-day trip	With others	I have never taken a multi-day trip, and I do not plan to.
7/18/2022 15:33:43	Weekly	Never	Never	Weekly	Weekly	Drive	Exercise	Walking/running, Biking, single-day trip, Biking, multi-day trip	Solo, With others	I take multi-day trips once or twice a year.
7/18/2022 17:25:24	Never	Monthly	Never	Annual	Monthly	Drive	Recreation	Walking/running, Fishing, Biking, single-day trip	With others	I have never taken a multi-day trip, but I would like to.
7/18/2022 19:56:12	Annual	Annual	Annual	Never	Annual	Drive	Recreation	Walking/running, Dog walking, Fishing, Biking, single-day trip	With others	I have never taken a multi-day trip, but I would like to.
7/19/2022 6:52:28	Annual	Never	Never	Annual	Weekly	Bike	Recreation	Walking/running, Dog walking, Fishing, Biking, single-day trip	Solo, With others	I have never taken a multi-day trip, and I do not plan to.
7/19/2022 7:33:59	Annual	Never	Never	Never	Annual	Bike	Exercise	Walking/running	With others	I take multi-day trips once or twice a year.
7/19/2022 7:35:28	Monthly	Never	Never	Never	Annual	Drive	Exercise	Walking/running, Dog walking	Solo, With others	I have never taken a multi-day trip, but I would like to.
7/19/2022 9:19:12	I have never heard of this trail	I have never heard of this trail	I have never heard of this trail	I have never heard of this trail	I have never heard of this trail	Walk	Recreation	Walking/running, Fishing, Stationery	Solo	I have never taken a multi-day trip, and I do not plan to.

Timestamp	How often has someone from your household visited each of these trails in the past year? Please use a check mark to indicate the typical frequency of your visits to each trail. [Three Rivers Heritage Trail]	How often has someone from your household visited each of these trails in the past year? Please use a check mark to indicate the typical frequency of your visits to each trail. [Armstrong Trail]	How often has someone from your household visited each of these trails in the past year? Please use a check mark to indicate the typical frequency of your visits to each trail. [Erie to Pittsburgh]	How often has someone from your household visited each of these trails in the past year? Please use a check mark to indicate the typical frequency of your visits to each trail. [Greater Allegheny Passage (GAP)]	How often has someone from your household visited each of these trails in the past year? Please use a check mark to indicate the typical frequency of your visits to each trail. [Butler Freeport Trail]	Think about the times you or someone in your household visited the trails listed above. What was your primary method of transportation to the trailhead?	What would your primary use of the Three Rivers Heritage Trail be?	What types of activities would you use the Three Rivers Heritage Trail for? Check all that apply.	If you would use the trail for biking, please check the boxes that describe your group.	Please indicate your interest level in multi-day trail trips.
7/19/2022 11:32:29	Annual	Weekly	Never	Never	Annual	Bike	Recreation	Biking, single-day trip	Solo, With others	I have never taken a multi-day trip, and I do not plan to.
7/19/2022 11:36:01	Never	Never	Never	Never	Annual	Walk	Recreation	Walking/running, Dog walking, Biking, single-day trip	With others	I have never taken a multi-day trip, but I would like to.
7/19/2022 11:42:16	Never	Never	Never	Never	Never	Bike	Recreation	Walking/running	With others	I have never taken a multi-day trip, and I do not plan to.
7/19/2022 16:12:05	Annual	Annual	Never	Annual	Monthly	Drive	Recreation	Walking/running, Biking, single-day trip, Biking, multi-day trip	Solo, With others	I take multi-day trips once or twice a year.
7/19/2022 16:56:22	Annual	Never	Never	Never	Never	Walk	Recreation	Biking, single-day trip	Solo, With others, With a children's trailer bike	I have never taken a multi-day trip, but I would like to.
7/20/2022 1:13:10	Weekly	Annual	Never	Annual	Monthly	Bike	Transportation	Dog walking, Fishing, Biking, single-day trip, Biking, multi-day trip	With others	I take multi-day trips once or twice a year.
7/20/2022 2:15:39	Weekly	Never	Never	Monthly	Annual	Drive	Transportation	Walking/running, Biking, single-day trip	With others	I have never taken a multi-day trip, but I would like to.
7/20/2022 10:55:10	I have never heard of this trail	I have never heard of this trail	I have never heard of this trail	I have never heard of this trail	I have never heard of this trail	Didnt	Exercise	Using a mobility accessibility device, Biking, single-day trip	With others	I have never taken a multi-day trip, and I do not plan to.
7/20/2022 18:44:18	Weekly	Never	I have never heard of this trail	Monthly	Annual	Drive	Recreation	Using a mobility accessibility device, Rollerblading, scootering, skateboarding, etc.	With others	I have never taken a multi-day trip, but I would like to.
7/21/2022 0:12:48	Monthly	I have never heard of this trail	I have never heard of this trail	Weekly	I have never heard of this trail	Bike	Transportation	Biking, single-day trip	Solo	I have never taken a multi-day trip, but I would like to.
7/21/2022 18:43:05	Weekly	Weekly	Never	Annual	Monthly	Cross country skiing/ snow shoeing	Recreation	Walking/running, Biking, single-day trip, Cross country skiing	Solo, With others	I have never taken a multi-day trip, and I do not plan to.
7/21/2022 18:50:27	Annual	Annual	Annual	Annual	Weekly	Drive	Recreation	Biking, single-day trip	Solo, With others	I take multi-day trips once or twice a year.
7/22/2022 5:58:04	Annual	Monthly	Never	Annual	Monthly	Drive	Recreation	Walking/running, Biking, single-day trip, Biking, multi-day trip, Other	Solo, With others	I have never taken a multi-day trip, but I would like to.
7/24/2022 8:23:36	Annual	Never	Never	Never	Annual	Drive	Exercise	Walking/running, Dog walking	With others	I have never taken a multi-day trip, and I do not plan to.
7/29/2022 23:42:59	Annual	Annual	Annual	Annual	Monthly	Drive	Recreation	Walking/running, Biking, single-day trip	Solo, With others	I have never taken a multi-day trip, but I would like to.
8/9/2022 9:48:06	Weekly	Annual	Never	Annual	Never	Bike	Recreation	Walking/running, Dog walking, Fishing, Biking, single-day trip, Biking, multi-day trip	Solo, With others	I take multi-day trips once or twice a year.

Timestamp	How often has someone from your household visited each of these trails in the past year? Please use a check mark to indicate the typical frequency of your visits to each trail. [Three Rivers Heritage Trail]	How often has someone from your household visited each of these trails in the past year? Please use a check mark to indicate the typical frequency of your visits to each trail. [Armstrong Trail]	How often has someone from your household visited each of these trails in the past year? Please use a check mark to indicate the typical frequency of your visits to each trail. [Erie to Pittsburgh]	How often has someone from your household visited each of these trails in the past year? Please use a check mark to indicate the typical frequency of your visits to each trail. [Greater Allegheny Passage (GAP)]	How often has someone from your household visited each of these trails in the past year? Please use a check mark to indicate the typical frequency of your visits to each trail. [Butler Freepoint Trail]	Think about the times you or someone in your household visited the trails listed above. What was your primary method of transportation to the trailhead?	What would your primary use of the Three Rivers Heritage Trail be?	What types of activities would you use the Three Rivers Heritage Trail for? Check all that apply.	If you would use the trail for biking, please check the boxes that describe your group.	Please indicate your interest level in multi-day trail trips.
8/14/2022 16:28:12	Annual	Never	Never	Never	Annual	Drive	Recreation	Walking/running, Biking, single-day trip, Cross country skiing	Solo, With others	I have never taken a multi-day trip, and I do not plan to.
9/6/2022 11:28:25	Never	Never	Never	Annual	Never	Drive	Recreation	Biking, single-day trip	With others	I have never taken a multi-day trip, and I do not plan to.
9/7/2022 20:45:15	Monthly	Never	Never	Monthly	Monthly	Drive	Exercise	Walking/running, Dog walking, Biking, single-day trip	Solo, With others	I have never taken a multi-day trip, and I do not plan to.

Timestamp	What connections, destinations, or features would you like to see at a trailhead? Please select up to 5.	What amenities or features would you like to see along the trail? Please select up to 5.	Do you currently live in Cheswick Borough?	If you answered "no" to Question 10, where do you live (Neighborhood & Zip code)?	Please indicate the representative ages of those in your household.	What is the approximate total income of your household?	What is your race/ethnicity?	Use this space to provide any additional comments or concerns about the trail connection in Cheswick Borough.
6/17/2022 13:22:50	Parking, Bike racks, Restrooms, Connections to other local trails	Restrooms, Restaurants	No	Gibsonia 15044	60 – 69 Years Old	\$150,000 - \$249,000	White	
6/17/2022 13:28:36	Wayfinding signage, Restrooms, Connections to other local trails	Scenic views, Wayfinding signage, Water fountains, Restaurants, Ice cream/snack shop	No	15203	50 – 59 Years Old	\$75,000-\$149,000	White	I'm looking forward to another section of trail along the Allegheny
6/17/2022 13:45:02	Parking, Wayfinding signage, Restrooms, Connections to other local trails	Historical information/signage, Wayfinding signage, Restrooms, Lighting	No	Oakmont 15139	60 – 69 Years Old	\$75,000-\$149,000	White	Thank you for this work.
6/17/2022 15:35:58	Parking, Wayfinding signage, Restrooms, Connections to other local trails	Scenic views, Historical information/signage, Wayfinding signage, Restrooms, Bike fix-it stations	No	Shaler 15223	70+ Years Old	Prefer not to specify	White	Work on connecting it all the way to the north shore of Pittsburgh.
6/17/2022 15:45:39	Parking, Wayfinding signage, Restrooms, Trash receptacles, Connections to other local trails, Connections to local attractions	Scenic views, Wayfinding signage, Restrooms, Bike fix-it stations, Trash receptacles, Ice cream/snack shop	No	Baldwin. 15227	60 – 69 Years Old, 70+ Years Old	Prefer not to specify	White	
6/17/2022 16:04:54	Parking, Wayfinding signage, Trash receptacles, Connections to public transit, Connections to other local trails	Scenic views, Trash receptacles, Restaurants, Ice cream/snack shop, Lodging	No	15228	50 – 59 Years Old	\$150,000 - \$249,000	White	
6/17/2022 17:22:02	Parking, Restrooms, Connections to water trails, Connections to other local trails, Connections to local attractions	Scenic views, Historical information/signage, Restrooms, Restaurants, Ice cream/snack shop	No	15108	40 – 49 Years Old	\$150,000 - \$249,000	White	
6/17/2022 17:37:45	Parking, Shelters, Restrooms, Trash receptacles, Connections to other local trails	Scenic views, Historical information/signage, Restrooms, Water fountains, Trash receptacles	No	Oakmont 15139	70+ Years Old	Prefer not to specify	White	Freeport Road is heavily traveled and dangerous to ride on. I am hoping for trail connections that will let me bike to a trail on low traffic routes.
6/18/2022 7:23:58	Parking, Restrooms, Trash receptacles, Connections to other local trails	Scenic views, Restrooms, Water fountains, Trash receptacles, Restaurants	No	15215	60 – 69 Years Old	Prefer not to specify	White	
6/18/2022 7:51:51	Parking, Bike racks, Restrooms, Trash receptacles, Connections to other local trails, Connections to local attractions	Scenic views, Historical information/signage, Restaurants, Ice cream/snack shop, Connections to local attractions	No	15212	50 – 59 Years Old	\$40,000-\$74,000	White	
6/18/2022 8:03:53	Wayfinding signage, Connections to public transit, Connections to water trails, Connections to other local trails, Connections to local attractions	Scenic views, Historical information/signage, Connections to local attractions	No	Pittsburgh 15212	50 – 59 Years Old	\$150,000 - \$249,000	Prefer not to specify	Freeport Road is not a good road for bicycles; the sidewalk on the north side of Freeport road is intermittent and stops before the turnpike. A trail would be safer for all non-motorized transportation.
6/18/2022 9:09:40	Parking, Wayfinding signage, Trash receptacles	Scenic views, Historical information/signage, Wayfinding signage, Restrooms, Seating	Yes		70+ Years Old	Prefer not to specify	White	
6/18/2022 9:53:29	Parking, Shelters, Restrooms, Trash receptacles, Connections to local attractions	Scenic views, Historical information/signage, Restrooms, Water fountains, Ice cream/snack shop	No	15656	70+ Years Old	\$75,000-\$149,000	White	
6/18/2022 10:55:39	Parking, Connections to other local trails, Connections to local attractions	Scenic views, Restaurants, Ice cream/snack shop, Connections to local attractions	No	Springdale 15144	60 – 69 Years Old	\$20,000-\$39,000	White	Biggest concern is the safety of a trail through this valley. Heavy traffic of trucks and cars plus small lanes and a trail along an active rail line which has had numerous accidents at crossings. Plus, current road cyclist here are very dangerous ignoring traffic laws.
6/20/2022 11:19:20	Parking, Restrooms, Trash receptacles, Connections to other local trails, Connections to local attractions	Scenic views, Restrooms, Trash receptacles, Lighting, Restaurants	No	O'Hara Township, 15238	19 -29 Years Old, 50 – 59 Years Old	\$150,000 - \$249,000	White	Hoping it's a real trail and not just a street route like Blawnox
6/21/2022 12:09:09	Parking, Wayfinding signage, Restrooms, Trash receptacles, Connections to local attractions	Scenic views, Historical information/signage, Water fountains, Seating, Connections to local attractions	No	15024 cheswick zip code	60 – 69 Years Old	\$75,000-\$149,000	White	Looking forward to continuing development of this trail system.
6/24/2022 15:46:27	Parking, Trash receptacles, Connections to local attractions	Scenic views, Historical information/signage, Wayfinding signage, Restrooms, Bike fix-it stations, Trash receptacles, Seating, Ice cream/snack shop	No	Glenshaw, 15116	50 – 59 Years Old	Prefer not to specify	Prefer not to specify	

Timestamp	What connections, destinations, or features would you like to see at a trailhead? Please select up to 5.	What amenities or features would you like to see along the trail? Please select up to 5.	Do you currently live in Cheswick Borough?	If you answered "no" to Question 10, where do you live (Neighborhood & Zip code)?	Please indicate the representative ages of those in your household.	What is the approximate total income of your household?	What is your race/ethnicity?	Use this space to provide any additional comments or concerns about the trail connection in Cheswick Borough.
7/1/2022 10:11:00	Shelters, Restrooms, Trash receptacles, Connections to public transit, Connections to other local trails	Wayfinding signage, Restrooms, Water fountains, Trash receptacles, Connections to local attractions	No	Squirrel Hill, 15217	5 – 12 Years Old, 40 – 49 Years Old	\$150,000 - \$249,000	White	
7/1/2022 10:20:34	Bike racks, Restrooms, Trash receptacles, Connections to public transit, Connections to other local trails	Restrooms, Water fountains, Seating, Ice cream/snack shop, Connections to local attractions	No	Morningside 15206	0 – 4 Years Old, 5 – 12 Years Old, 19 -29 Years Old, 40 – 49 Years Old	\$75,000-\$149,000	White	
7/1/2022 10:24:53	Parking, Bike racks, Shelters, Wayfinding signage, Restrooms, Connections to other local trails, Connections to local attractions	Scenic views, Historical information/signage, Outdoor art, Wayfinding signage, Restrooms, Water fountains, Bike fix-it stations, Lighting	No	Etna, 15223	30 – 39 Years Old	\$150,000 - \$249,000	White	
7/1/2022 10:45:22	Parking, Shelters, Trash receptacles	Water fountains	No	Verona 15147	30 – 39 Years Old	\$40,000-\$74,000	White	
7/1/2022 13:31:42	Seating, Connections to water trails, Connections to other local trails, Connections to local attractions	Scenic views, Historical information/signage, Bike fix-it stations, Connections to local attractions	No	Fox chapel 15238	19 -29 Years Old	Under \$20,000	White	
7/1/2022 14:05:41	Wayfinding signage, Restrooms, Trash receptacles, Connections to other local trails, Connections to local attractions	Wayfinding signage, Restrooms, Water fountains, Bike fix-it stations, Ice cream/snack shop	No	15206	30 – 39 Years Old	\$150,000 - \$249,000	White	
7/1/2022 14:24:17	Parking, Wayfinding signage, Restrooms, Trash receptacles, Connections to other local trails	Scenic views, Outdoor art, Restrooms, Water fountains, Lighting	No	Penn Hills 15235	19 -29 Years Old, 30 – 39 Years Old	\$150,000 - \$249,000	White	
7/1/2022 14:34:53	Wayfinding signage, Connections to public transit, Connections to water trails, Connections to other local trails, Connections to local attractions	Restrooms, Water fountains, Bike fix-it stations, Lighting, Restaurants	No		19 -29 Years Old	Prefer not to specify	Prefer not to specify	
7/1/2022 14:40:12	Parking, Restrooms, Trash receptacles, Connections to public transit, Connections to other local trails	Scenic views, Wayfinding signage, Trash receptacles, Seating, Ice cream/snack shop	No	Bloomfield, 15224	0 – 4 Years Old, 5 – 12 Years Old, 30 – 39 Years Old, 40 – 49 Years Old	\$150,000 - \$249,000	White	
7/1/2022 14:44:36	Parking, Shelters, Restrooms, Trash receptacles, Connections to other local trails	Scenic views, Historical information/signage, Trash receptacles, Lighting, Connections to local attractions	No	Southside, 15203	19 -29 Years Old	\$75,000-\$149,000	White	
7/1/2022 14:46:16	Parking, Shelters, Restrooms, Connections to public transit, Connections to other local trails	Scenic views, Restrooms, Water fountains, Lighting, Ice cream/snack shop	No	Lawrenceville 15201	30 – 39 Years Old	\$150,000 - \$249,000	White	
7/1/2022 16:09:04	Parking, Bike racks, Seating, Restrooms, Trash receptacles	Scenic views, Historical information/signage, Wayfinding signage, Restrooms, Water fountains	No		30 – 39 Years Old	\$75,000-\$149,000	White	
7/1/2022 16:12:08	Parking, Shelters, Seating, Restrooms, Trash receptacles	Scenic views, Restrooms, Bike fix-it stations, Trash receptacles, Lighting	No	15223	0 – 4 Years Old, 30 – 39 Years Old	\$150,000 - \$249,000	White	
7/2/2022 10:36:02	Parking, Seating, Connections to public transit, Connections to other local trails, Connections to local attractions	Scenic views, Outdoor art, Restaurants, Ice cream/snack shop, Connections to local attractions	No	Homewood/Lincoln-Lemington	5 – 12 Years Old, 30 – 39 Years Old	\$40,000-\$74,000	African American or Black	
7/9/2022 16:16:37	Parking, Bike racks, Shelters, Wayfinding signage, Seating, Restrooms, Trash receptacles	Scenic views, Historical information/signage, Restrooms, Restaurants, Ice cream/snack shop, Lodging	No	Curtisville 15084	50 – 59 Years Old, 60 – 69 Years Old	\$75,000-\$149,000	White	
7/10/2022 9:32:32	Parking, Shelters, Restrooms, Trash receptacles	Historical information/signage, Restrooms, Water fountains, Trash receptacles, Connections to local attractions	No	15215	5 – 12 Years Old, 13 – 18 Years Old, 40 – 49 Years Old	\$75,000-\$149,000	White	
7/12/2022 12:00:27	Parking, Wayfinding signage, Restrooms, Trash receptacles	Wayfinding signage, Water fountains, Bike fix-it stations	No	Dorseyville 15238	60 – 69 Years Old	\$20,000-\$39,000	Prefer not to specify	

Timestamp	What connections, destinations, or features would you like to see at a trailhead? Please select up to 5.	What amenities or features would you like to see along the trail? Please select up to 5.	Do you currently live in Cheswick Borough?	If you answered "no" to Question 10, where do you live (Neighborhood & Zip code)?	Please indicate the representative ages of those in your household.	What is the approximate total income of your household?	What is your race/ethnicity?	Use this space to provide any additional comments or concerns about the trail connection in Cheswick Borough.
7/12/2022 18:47:46	Parking, Bike racks, Shelters, Seating, Restrooms, Trash receptacles, Connections to public transit, Connections to water trails, Connections to other local trails, Connections to local attractions	Scenic views, Historical information/signage, Outdoor art, Restrooms, Water fountains, Pet clean-up stations, Trash receptacles, Restaurants, Ice cream/snack shop	Yes		30 – 39 Years Old	\$75,000-\$149,000	White	
7/12/2022 19:19:30	Parking, Restrooms, Connections to water trails, Connections to other local trails, Connections to local attractions	Scenic views, Water fountains, Trash receptacles, Restaurants, Connections to local attractions	Yes		0 – 4 Years Old, 30 – 39 Years Old	\$75,000-\$149,000	White	So excited about this!!! Since we moved here 4 years ago I have been waiting for this to happen, so thank you!
7/12/2022 19:26:22	Parking, Shelters, Wayfinding signage, Seating, Restrooms, Connections to water trails, Connections to other local trails, Connections to local attractions	Scenic views, Outdoor art, Restrooms, Water fountains, Bike fix-it stations, Pet clean-up stations, Seating, Restaurants, Connections to local attractions	Yes		60 – 69 Years Old	Prefer not to specify	White	
7/12/2022 19:37:58	Parking, Bike racks, Wayfinding signage, Trash receptacles, Connections to other local trails	Scenic views, Wayfinding signage, Water fountains, Trash receptacles, Connections to local attractions	Yes		0 – 4 Years Old, 30 – 39 Years Old	\$75,000-\$149,000	White	Can't wait! We've been hoping they would connect the trail through Cheswick.
7/12/2022 19:43:28	Parking, Seating, Restrooms, Trash receptacles, Connections to other local trails	Scenic views, Historical information/signage, Restrooms, Trash receptacles, Seating, Lighting	Yes		60 – 69 Years Old	\$75,000-\$149,000	White	
7/12/2022 19:58:13	Parking, Seating, Restrooms, Trash receptacles, Connections to other local trails	Scenic views, Historical information/signage, Restrooms, Bike fix-it stations, Seating	Yes		50 – 59 Years Old	Prefer not to specify	Prefer not to specify	
7/12/2022 20:03:32	Parking, Trash receptacles	Scenic views, Historical information/signage, Restrooms, Trash receptacles, Seating	Yes		50 – 59 Years Old	\$75,000-\$149,000	White	
7/12/2022 20:13:02	Parking, Wayfinding signage, Restrooms, Connections to other local trails, Connections to local attractions	Scenic views, Restrooms, Bike fix-it stations, Seating, Connections to local attractions	Yes		40 – 49 Years Old	Prefer not to specify	White	Would be great not to have to drive to trailhead
7/12/2022 20:14:32	Parking, Restrooms, Connections to public transit, Connections to other local trails, Connections to local attractions	Scenic views, Historical information/signage, Pet clean-up stations, Seating, Connections to local attractions	Yes		0 – 4 Years Old, 5 – 12 Years Old, 30 – 39 Years Old	\$150,000 - \$249,000	White	
7/12/2022 20:36:30	Seating, Restrooms, Trash receptacles, Connections to water trails	Scenic views, Restrooms, Water fountains, Trash receptacles, Seating	Yes		5 – 12 Years Old, 13 – 18 Years Old, 19 -29 Years Old, 40 – 49 Years Old	Prefer not to specify	Prefer not to specify	
7/12/2022 20:41:10	Parking, Seating, Restrooms, Trash receptacles	Scenic views, Restrooms, Water fountains, Trash receptacles, Seating	No	Harwick 15049	60 – 69 Years Old	\$20,000-\$39,000	White	
7/12/2022 20:51:23	Parking, Restrooms, Trash receptacles, Connections to other local trails	Scenic views, Historical information/signage, Outdoor art, Restrooms, Trash receptacles, Seating, Lighting, Restaurants, Lodging, Connections to local attractions	Yes		50 – 59 Years Old, 60 – 69 Years Old	\$75,000-\$149,000	White	
7/12/2022 21:35:36	Parking, Bike racks, Wayfinding signage, Restrooms, Trash receptacles, Connections to other local trails	Scenic views, Historical information/signage, Wayfinding signage, Restrooms, Bike fix-it stations, Trash receptacles, Seating, Lighting, Ice cream/snack shop	Yes		5 – 12 Years Old, 13 – 18 Years Old, 40 – 49 Years Old	\$150,000 - \$249,000	White	
7/12/2022 22:55:39	Parking, Bike racks, Trash receptacles, Connections to water trails, Connections to other local trails	Scenic views, Historical information/signage, Wayfinding signage, Restrooms, Water fountains, Pet clean-up stations, Trash receptacles, Restaurants, Ice cream/snack shop, Lodging	Yes		40 – 49 Years Old	\$75,000-\$149,000	White	
7/12/2022 23:02:29	Parking, Wayfinding signage, Restrooms, Trash receptacles, Connections to public transit	Historical information/signage, Outdoor art, Restrooms, Trash receptacles, Seating	Yes		40 – 49 Years Old, 50 – 59 Years Old	\$150,000 - \$249,000	White	
7/12/2022 23:41:49	Parking, Shelters, Wayfinding signage, Seating, Restrooms, Trash receptacles	Wayfinding signage, Restrooms, Trash receptacles, Seating, Ice cream/snack shop	Yes		5 – 12 Years Old, 13 – 18 Years Old, 50 – 59 Years Old	\$75,000-\$149,000	White	
7/12/2022 23:46:40	Parking, Wayfinding signage, Restrooms, Connections to water trails, Connections to local attractions	Scenic views, Historical information/signage, Outdoor art, Wayfinding signage, Restrooms	Yes		5 – 12 Years Old, 13 – 18 Years Old, 19 -29 Years Old, 40 – 49 Years Old	\$150,000 - \$249,000	White	



Timestamp	What connections, destinations, or features would you like to see at a trailhead? Please select up to 5.	What amenities or features would you like to see along the trail? Please select up to 5.	Do you currently live in Cheswick Borough?	If you answered "no" to Question 10, where do you live (Neighborhood & Zip code)?	Please indicate the representative ages of those in your household.	What is the approximate total income of your household?	What is your race/ethnicity?	Use this space to provide any additional comments or concerns about the trail connection in Cheswick Borough.
7/13/2022 0:16:54	Parking, Shelters, Restrooms, Trash receptacles, Connections to other local trails	Scenic views, Restrooms, Water fountains, Trash receptacles, Ice cream/snack shop	No	Harmar township	5 – 12 Years Old, 13 – 18 Years Old, 40 – 49 Years Old	\$150,000 - \$249,000	White	
7/13/2022 2:21:51	Parking, Bike racks, Shelters, Wayfinding signage, Seating, Restrooms, Trash receptacles, Connections to public transit, Connections to water trails, Connections to other local trails, Connections to local attractions	Scenic views, Historical information/signage, Wayfinding signage, Restrooms, Water fountains, Bike fix-it stations, Pet clean-up stations, Trash receptacles, Seating, Lighting, Lodging	Yes		50 – 59 Years Old	\$20,000-\$39,000	White	
7/13/2022 11:06:50	Parking, Bike racks, Restrooms, Trash receptacles, Connections to water trails	Scenic views, Historical information/signage, Outdoor art, Wayfinding signage, Restrooms, Water fountains, Bike fix-it stations, Pet clean-up stations, Trash receptacles, Seating, Lighting, Restaurants, Ice cream/snack shop, Lodging, Connections to local attractions	No	15144	5 – 12 Years Old, 13 – 18 Years Old, 30 – 39 Years Old, 40 – 49 Years Old	\$40,000-\$74,000	Prefer not to specify	Has to be safe from criminals using it.
7/13/2022 16:51:39	Restrooms, Connections to other local trails, Connections to local attractions	Restrooms, Bike fix-it stations, Pet clean-up stations, Restaurants	No	15209	30 – 39 Years Old	\$150,000 - \$249,000	White	My family I use this trail pretty much every day. We love to see it continue to grow and be able to connect the towns. We hope to buy additional property in Cheswick, but the only draw back is no trail access. We purchased our current home due to the easy trail access in Millvale.
7/14/2022 6:26:32	Parking, Restrooms, Trash receptacles, Connections to other local trails	Restrooms, Trash receptacles, Lighting, Restaurants	No	15209	30 – 39 Years Old	\$150,000 - \$249,000	Prefer not to specify	
7/15/2022 16:12:51	Parking, Shelters, Wayfinding signage, Restrooms, Trash receptacles	Scenic views, Wayfinding signage, Restrooms, Bike fix-it stations, Trash receptacles	Yes		60 – 69 Years Old	\$20,000-\$39,000	White	
7/18/2022 15:33:43	Parking, Wayfinding signage, Restrooms, Connections to other local trails	Restrooms, Water fountains, Bike fix-it stations	Yes		19 -29 Years Old, 60 – 69 Years Old	\$150,000 - \$249,000	White	I think this would be a critical connection to three rivers heritage trail and GAP trail. I regularly ride the thee river heritage trail - multiple times per week. It would be nice to bike the whole way. Also this could open up commuting options along Allegheny river. I work along the three river heritage trail and would consider biking to work if I could do so safely
7/18/2022 17:25:24	Parking, Shelters, Restrooms, Trash receptacles, Connections to local attractions	Restrooms, Water fountains, Trash receptacles, Seating, Restaurants	Yes		5 – 12 Years Old, 13 – 18 Years Old, 40 – 49 Years Old	\$75,000-\$149,000	Prefer not to specify	Thank you for considering this. It is much needed!
7/18/2022 19:56:12	Parking, Bike racks, Wayfinding signage, Seating, Restrooms, Trash receptacles, Connections to water trails, Connections to other local trails	Scenic views, Historical information/signage, Wayfinding signage, Restrooms, Trash receptacles	Yes		13 – 18 Years Old, 60 – 69 Years Old	\$75,000-\$149,000	White	
7/19/2022 6:52:28	Parking, Trash receptacles, Connections to water trails, Connections to local attractions	Scenic views, Historical information/signage, Trash receptacles, Connections to local attractions	No	Natrona Heights 15065	13 – 18 Years Old, 30 – 39 Years Old, 40 – 49 Years Old	\$40,000-\$74,000	White	
7/19/2022 7:33:59	Parking, Bike racks, Wayfinding signage, Restrooms, Trash receptacles, Connections to water trails, Connections to other local trails, Connections to local attractions	Wayfinding signage, Restrooms, Water fountains, Bike fix-it stations, Trash receptacles, Lighting	Yes		19 -29 Years Old, 40 – 49 Years Old	\$40,000-\$74,000	White	Looking forward to the additional business that could potentially follow.
7/19/2022 7:35:28	Parking, Restrooms, Trash receptacles	Scenic views, Historical information/signage, Outdoor art, Restrooms, Pet clean-up stations, Trash receptacles	Yes		30 – 39 Years Old, 60 – 69 Years Old	\$75,000-\$149,000	White	It would be a community asset.
7/19/2022 9:19:12	Restrooms, Trash receptacles, Connections to public transit, Connections to local attractions	Scenic views, Historical information/signage, Restrooms, Water fountains, Trash receptacles, Lighting, Connections to local attractions	No	15215	13 – 18 Years Old, 60 – 69 Years Old, 70+ Years Old	Prefer not to specify	White	

Timestamp	What connections, destinations, or features would you like to see at a trailhead? Please select up to 5.	What amenities or features would you like to see along the trail? Please select up to 5.	Do you currently live in Cheswick Borough?	If you answered "no" to Question 10, where do you live (Neighborhood & Zip code)?	Please indicate the representative ages of those in your household.	What is the approximate total income of your household?	What is your race/ethnicity?	Use this space to provide any additional comments or concerns about the trail connection in Cheswick Borough.
7/19/2022 11:32:29	Parking, Bike racks	Connections to local attractions	Yes		30 – 39 Years Old	\$40,000-\$74,000	White	I moved from Vandergrift (to Cheswick) which had the Roaring Run Trail and is working on now connecting up the Kiski to Schenley... so to move to Allegheny Co and have no safe (non road) bike trails was very disappointing. I work in Armstrong Co and do daily bike rides on the Armstrong Trail. I would be THRILLED to leave the safety of Beech St and not have to drive a half hour to a familiar trail.
7/19/2022 11:36:01	Parking, Shelters, Wayfinding signage, Seating, Restrooms	Scenic views, Historical information/signage, Wayfinding signage, Restrooms, Seating, Restaurants	Yes		60 – 69 Years Old	\$75,000-\$149,000	White	
7/19/2022 11:42:16	Parking, Bike racks, Shelters, Seating, Trash receptacles	Scenic views	Yes		5 – 12 Years Old, 13 – 18 Years Old, 40 – 49 Years Old	\$75,000-\$149,000	White	
7/19/2022 16:12:05	Parking, Bike racks, Restrooms, Trash receptacles	Historical information/signage, Restrooms, Trash receptacles, Ice cream/snack shop, Lodging	No	Harwick 15049	60 – 69 Years Old	\$75,000-\$149,000	White	
7/19/2022 16:56:22	Parking, Restrooms, Trash receptacles	Restrooms, Water fountains, Trash receptacles, Lighting, Restaurants	No	15144	5 – 12 Years Old, 30 – 39 Years Old	\$75,000-\$149,000	Hispanic or Latino	
7/20/2022 1:13:10	Parking, Bike racks, Shelters, Restrooms, Trash receptacles, Connections to public transit, Connections to other local trails, Connections to local attractions	Scenic views, Restrooms, Trash receptacles, Lighting, Connections to local attractions	No	15084	50 – 59 Years Old	\$20,000-\$39,000	White	
7/20/2022 2:15:39	Parking, Shelters, Seating, Restrooms, Trash receptacles	Restrooms, Bike fix-it stations, Trash receptacles, Lighting	Yes		13 – 18 Years Old, 19 – 29 Years Old, 40 – 49 Years Old, 70+ Years Old	\$150,000 - \$249,000	White	
7/20/2022 10:55:10	Restrooms, Trash receptacles	Scenic views, Restrooms, Lighting, Restaurants, Ice cream/snack shop	Yes		40 – 49 Years Old, 50 – 59 Years Old	\$40,000-\$74,000	White	
7/20/2022 18:44:18	Parking, Restrooms	Historical information/signage, Lighting, Ice cream/snack shop, Connections to local attractions	No	15108	13 – 18 Years Old, 40 – 49 Years Old	\$75,000-\$149,000	White	I would like to see power outlets on the trail for ebikes and mobility devices.
7/21/2022 0:12:48	Wayfinding signage, Restrooms, Connections to public transit, Connections to other local trails, Connections to local attractions	Scenic views, Wayfinding signage, Restrooms, Water fountains, Connections to local attractions	No	Pittsburgh (East Liberty) - 15206	19 -29 Years Old	\$75,000-\$149,000	White	Definitely in bikeable distance from me! Would love to have a safe connection to the city!
7/21/2022 18:43:05	Parking, Bike racks, Connections to water trails, Connections to other local trails	Historical information/signage, Restrooms, Trash receptacles, Ice cream/snack shop	Yes		60 – 69 Years Old	\$75,000-\$149,000	White	
7/21/2022 18:50:27	Parking, Wayfinding signage, Seating, Restrooms, Connections to other local trails, Connections to local attractions	Scenic views, Historical information/signage, Wayfinding signage, Restrooms, Water fountains, Seating	No	15024	60 – 69 Years Old	Prefer not to specify	Prefer not to specify	
7/22/2022 5:58:04	Parking, Shelters, Restrooms, Trash receptacles, Connections to other local trails, Connections to local attractions	Scenic views, Historical information/signage, Outdoor art, Wayfinding signage, Restrooms, Bike fix-it stations, Pet clean-up stations, Trash receptacles, Ice cream/snack shop, Connections to local attractions	No	New Kensington 15068	60 – 69 Years Old	\$40,000-\$74,000	White	
7/24/2022 8:23:36	Parking, Restrooms, Trash receptacles	Scenic views, Historical information/signage, Restrooms, Pet clean-up stations, Trash receptacles, Lighting	Yes		30 – 39 Years Old	\$150,000 - \$249,000	White	
7/29/2022 23:42:59	Parking, Wayfinding signage, Restrooms, Trash receptacles, Connections to other local trails	Scenic views, Historical information/signage, Seating, Ice cream/snack shop	No	Aspinwall 15215	60 – 69 Years Old	\$75,000-\$149,000	White	
8/9/2022 9:48:06	Parking, Restrooms, Trash receptacles, Connections to other local trails, Connections to local attractions	Restrooms, Water fountains, Bike fix-it stations, Pet clean-up stations, Trash receptacles	Yes		30 – 39 Years Old	\$75,000-\$149,000	White	

Timestamp	What connections, destinations, or features would you like to see at a trailhead? Please select up to 5.	What amenities or features would you like to see along the trail? Please select up to 5.	Do you currently live in Cheswick Borough?	If you answered "no" to Question 10, where do you live (Neighborhood & Zip code)?	Please indicate the representative ages of those in your household.	What is the approximate total income of your household?	What is your race/ethnicity?	Use this space to provide any additional comments or concerns about the trail connection in Cheswick Borough.
8/14/2022 16:28:12	Wayfinding signage, Trash receptacles, Connections to water trails, Connections to other local trails, Connections to local attractions	Scenic views, Wayfinding signage, Restrooms, Seating, Restaurants, Ice cream/snack shop, Connections to local attractions	Yes		19 -29 Years Old	\$75,000-\$149,000	White	My house is on Duquesne Ave very close to Rachel Carson park. I would love to see a trail connection here, and I would also love to see more park space in the abandoned lot and around the dock area. There is a lot of potential in that area! People are constantly walking and out and about.
9/6/2022 11:28:25	Parking, Wayfinding signage, Seating, Restrooms, Trash receptacles	Historical information/signage, Outdoor art, Wayfinding signage, Trash receptacles, Seating	No	15492	5 – 12 Years Old, 40 – 49 Years Old	\$40,000-\$74,000	White	
9/7/2022 20:45:15	Parking, Bike racks, Wayfinding signage, Trash receptacles, Connections to local attractions	Scenic views, Historical information/signage, Wayfinding signage, Water fountains, Bike fix-it stations, Pet clean-up stations, Trash receptacles, Seating, Restaurants, Ice cream/snack shop	Yes		30 – 39 Years Old	Prefer not to specify	White	

Second Online Public Survey  
February 2023

Timestamp	How would be your primary use the trail?	What would your primary use of the Cheswick segment be?	Is there a need for greater connection to businesses and the riverfront?	Would you like grater riverfront access?	Do you support the development of the Three Rivers Heritage Trail in your community?	Thoughts related to the proposed riverfront alignment.	Thoughts related to the community connection alignment.
2023/02/09 4:29:30 PM AST	Walker	Recreation	Yes, a safe community connector is needed	Yes	Yes	This would enable me to use a local trail without having to drive to Millvale or surrounding areas.	This would help showcase local small businesses.
2023/02/09 8:19:03 PM AST	Walker	Exercise	Maybe, I seem to get around just fine	Yes	Yes		
2023/02/11 4:36:57 PM AST	Biker	Recreation	Yes, a safe community connector is needed	Yes	Yes	Preferred due to aesthetic reasons. IMO a path adjacent to RR tracks would be most straight and direct passage thru Harmarville, Cheswick and Springdale with a fence	This would be okay too
2023/02/11 6:38:18 PM AST	Biker	Recreation	Yes, a safe community connector is needed	Yes	Yes	Would like to use for bike riding to downtown	Hoping it's not too much traffic for the road and bikers abide by the rules.
2023/02/13 11:03:45 PM AST	Runner	Recreation	Yes, a safe community connector is needed	Yes	Yes	People can hike today in the streets of Cheswick. We need to develop our riverfront and showcase one of the best parts of	This is not a safe option - tons of people already walk in the middle of the road with their dogs.
2023/02/15 6:18:19 PM AST	I would not use the trail		No, the community is already well connected	No	No	I am not opposed to the riverfront being used, but I am opposed to the residential streets in my community being used for this purpose.	I am opposed to the community connection in Cheswick. I bought my home here in June of 2021. One of the reasons I was attracted to this neighborhood was because of the beautiful wide streets and sidewalks. I am located on a quiet cul-de-sac right off of Spruce street. The proposed plan would run a trail the length of Spruce, causing narrow streets and
2023/02/20 10:01:57 PM AST	Biker	Recreation	Yes, a safe community connector is needed	Yes	Yes	I am concerned with the large amount of homeless people that are now residing in tents and makeshift shelters along the passageway from Millvale to the North Side, and how this could effect the safety of our	
2023/03/29 10:07:13 AM AST	Walker	Exercise	Yes, a safe community connector is needed	Yes	Yes	I think it would be a great development for the area to provide a safe place for families to get outside.	I work at Curtiss-Wright EMD and I think a connection via Low Grade road would be awesome and would increase the safety of those already walking up and down the road.