

# TURTLE CREEK CONNECTOR TRAIL

Public Meeting

March 12 and 14, 2024



# ● AGENDA

Introductions	5 minutes
Why Trails? The Turtle Creek Connector Trail in Context	15 minutes
What has been done so far? What is the Turtle Creek Connector?	15 minutes
What is happening now and what comes next?	10 minutes
Storymap walkthrough	15 minutes
Paper map review	25 minutes
Wrap up	5 minutes

# ● Project Team

Pennsylvania Environmental Council

Friends of the Riverfront

WSP and Toole Design

Allegheny County

Project Sponsors:



Consultant Team:



**Why trails?**

# ● Why Trails?

- **Recreation**
- **Access to Nature**
- **Connectivity and Transportation**
- **Community**
- **Health**



- **Regional Examples**



**Brackenridge, PA**



**Etna, PA**



**VOPP Trail Connector**

**Trail building takes time!**

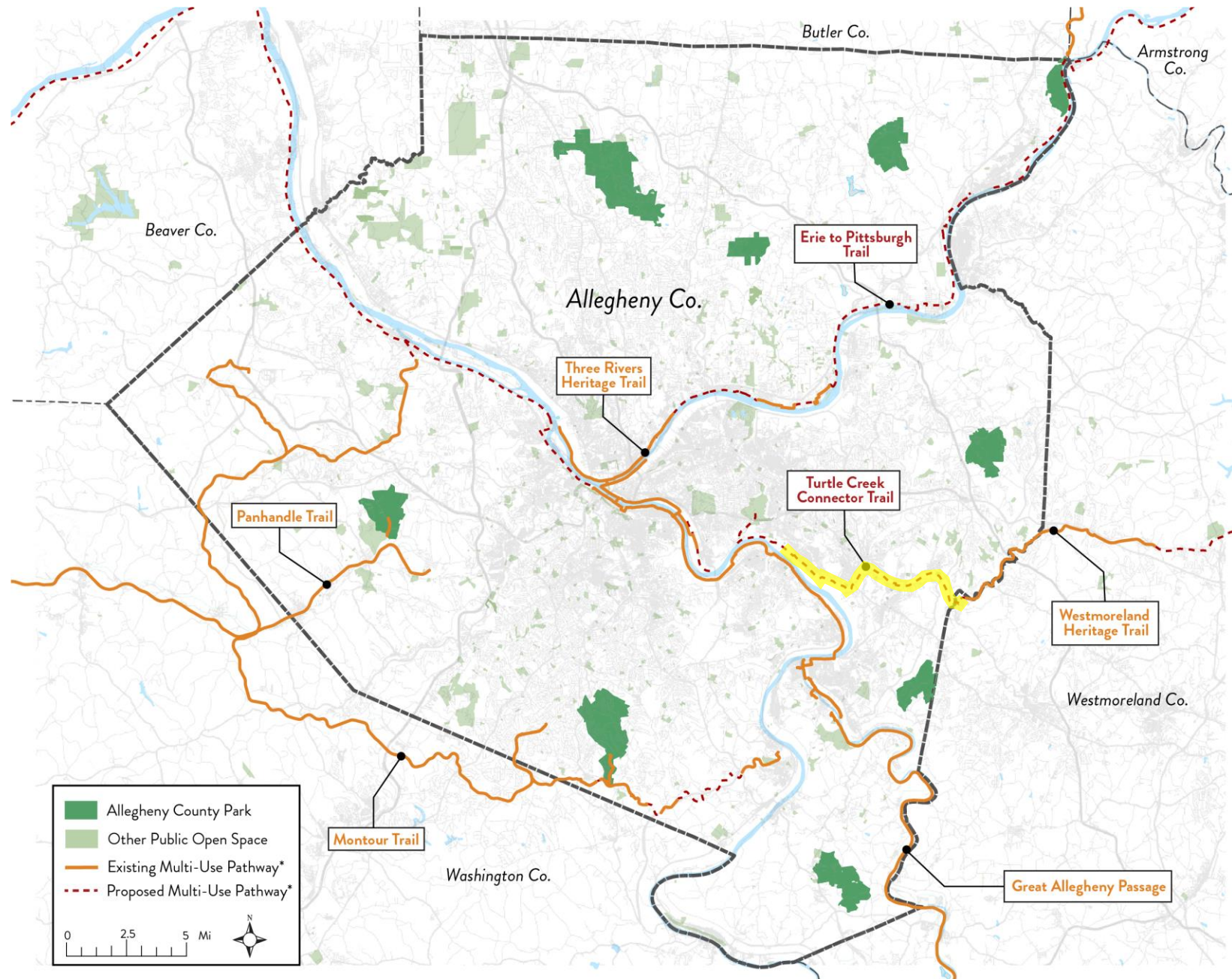
# Turtle Creek Connector in Context

## Regional Trails

- Westmoreland Heritage Trail
- Three Rivers Heritage Trail
- Montour Trail

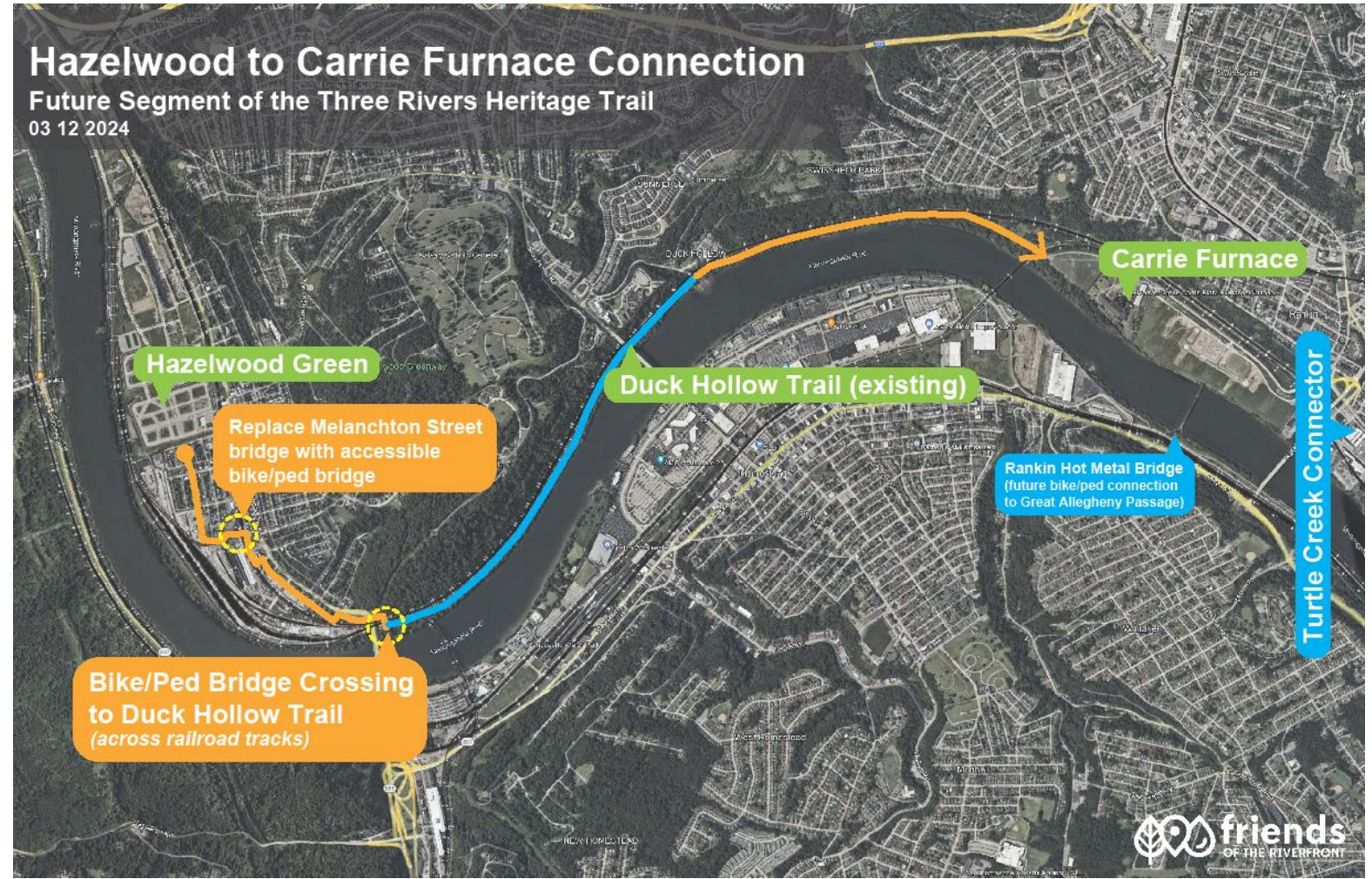
## Inter-Regional Trails

- Erie-to-Pittsburgh Trail
- Great Allegheny Passage (to Cumberland, MD)
- Panhandle Trail (to Weirton, WV)



# ● Turtle Creek Connector in Context

Hazelwood to Carrie Furnace Trail will connect the Turtle Creek Connector to the Hazelwood neighborhood where trails connect to the City of Pittsburgh





**What has been  
done so far?**

# ● Project Development Timeline

PUBLIC ENGAGEMENT

Project Phase	Est. Timeline
<b>Project Initiation</b>	<b>12 to 36 months</b>
Fundraising/Grant Applications	
<b>Alignment Alternative Analysis &amp; Selection</b>	
<b>Project Design &amp; Engineering</b>	<b>12 to 24 months</b>
Environmental clearance	
Right-of-way plan	
Utility plan	
Preliminary project engineering	
Right-of-way acquisition/approvals (FOR/PEC)	
Utility clearance	
Permit approvals	
Final project design	
<b>Construction</b>	<b>Unknown</b>
Fundraising	

◀ **WE ARE  
HERE!**



**Trail building takes time!**

# ● Project Funding

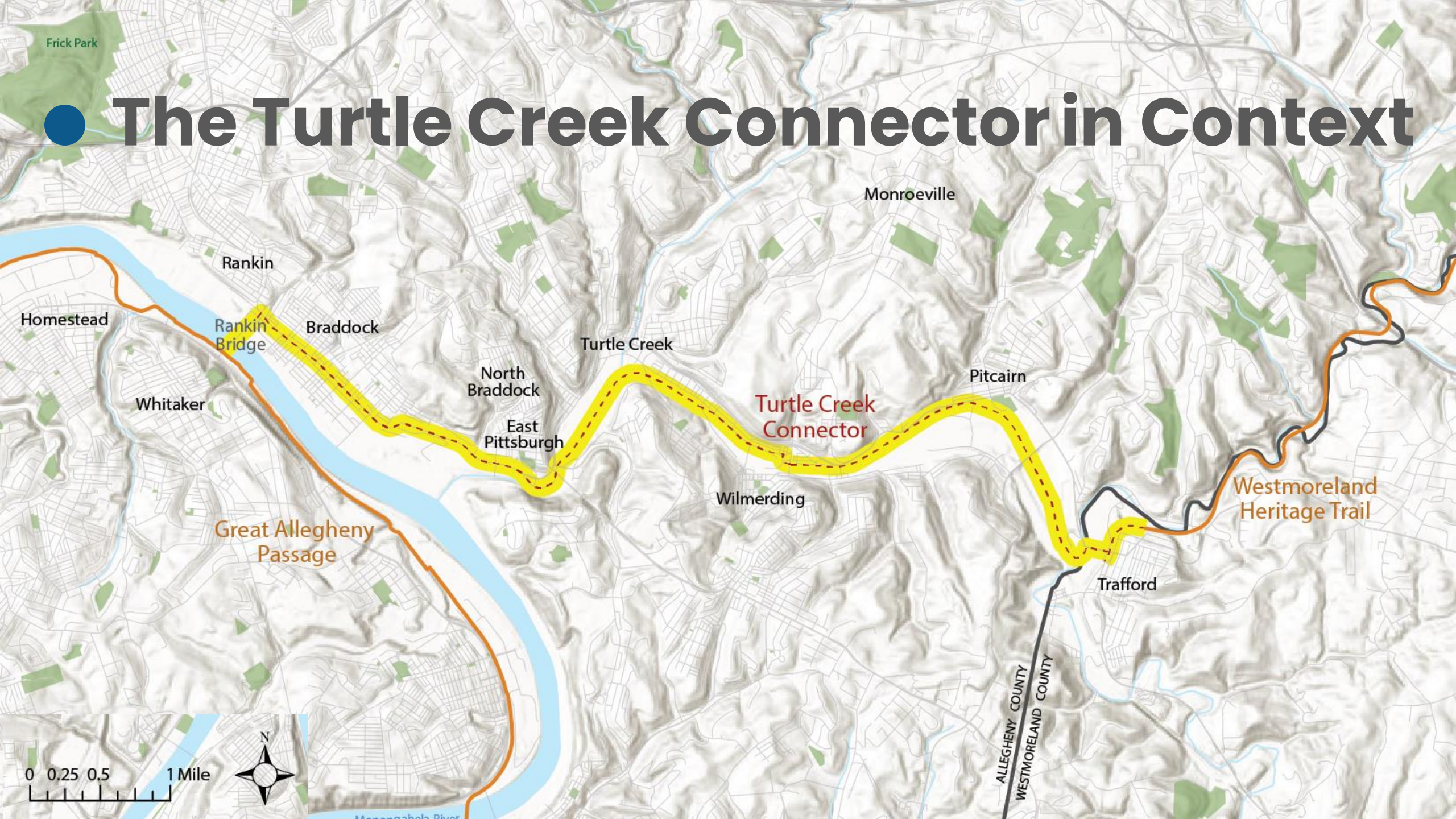


## \$2.5 million

The Redevelopment Authority of Allegheny County (RAAC) established the Trail Development Fund (TDF) under the Allegheny County American Rescue Plan Act Coronavirus Local Fiscal Recovery Fund Agreement.

RAAC established the TDF to provide grants to eligible applicants to **create new trail opportunities**, expand and **enhance** existing trail facilities, and facilitate **local connections** to existing trail and multimodal transportation systems.

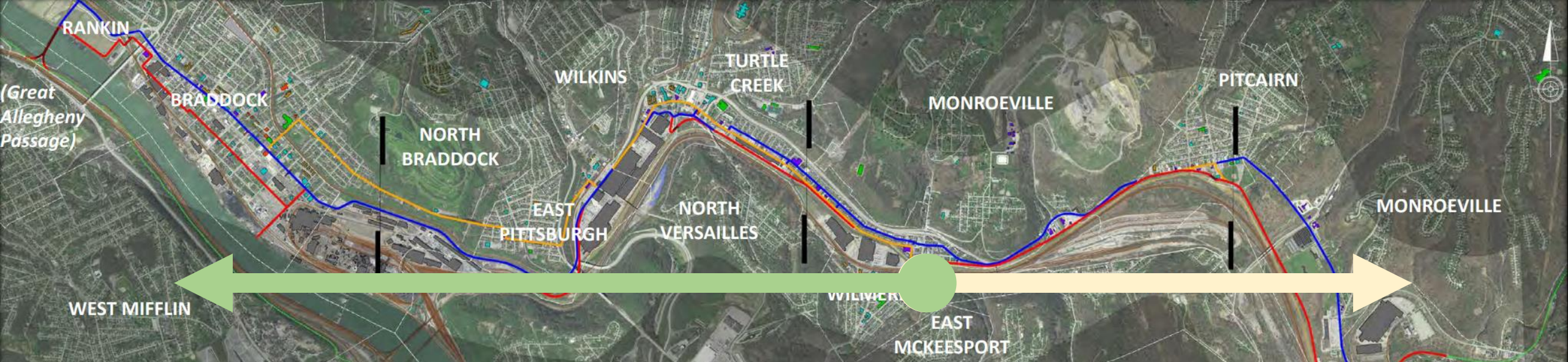
# ● The Turtle Creek Connector in Context



0 0.25 0.5 1 Mile

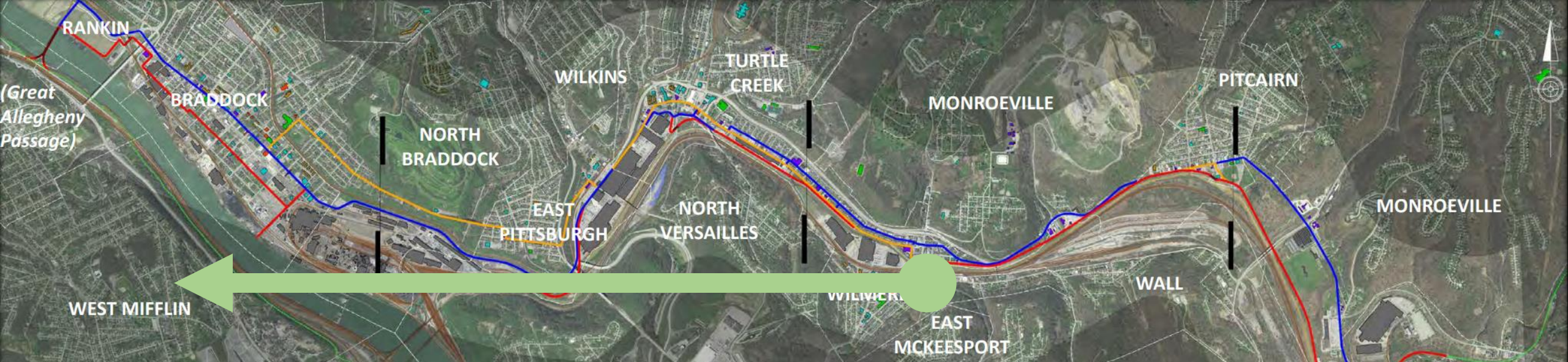


Monongahela River



- 3+ options with multiple combinations
- A lot more analysis needed
- On-street facilities with upgraded sidewalks

- 2 options
- Railroad Right of Way
- Broadway/Tri-Boro Expressway



Bike Lanes



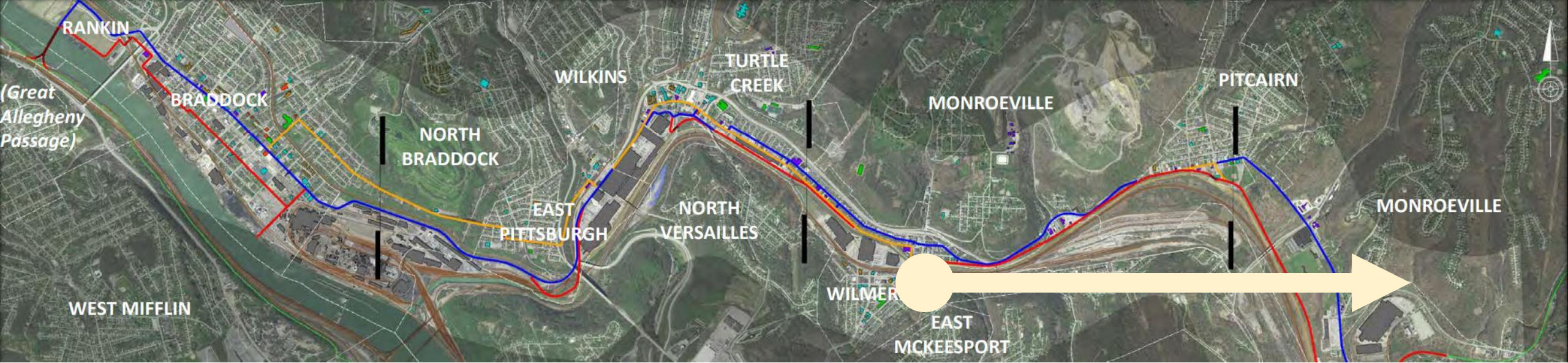
2 – Way Bike Lanes



Climbing Lanes



Shared Lanes



Shared Use Path



Protected Bike Lane



Side Path

# Alternative Analysis Report

- Draft Submission made in December of 2023
- Suggestions from Public Meetings and Story Map TBD
- Analysis done on separate segments to achieve best route.
- Segments graded on 5 categories, then a Level of stress was determined.
  - Traffic
  - Safety
  - Design Impacts
  - Connectivity
  - Public Process
- A General Construction Cost and Operation and Maintenance Cost for each segment was also considered.
- From the Draft Analysis, the Long Term-Rural Favored Alignment was chosen preferred alternative.

TURTLE CREEK CONNECTOR

December 2023

## ALTERNATIVE ANALYSIS REPORT



Prepared for:



11 Stanwix, Suite 950  
Pittsburgh, PA 15222

Prepared by:

TRANSYSTEMS

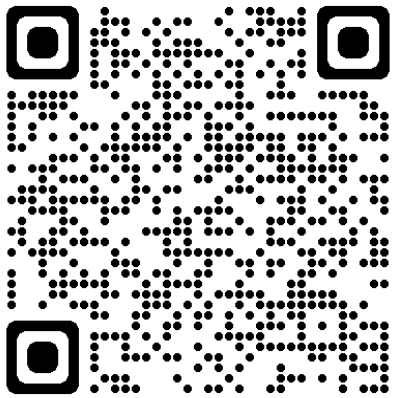
437 Grant Street  
Frick Building, Suite 812  
Pittsburgh, PA 15219



**What is happening  
now?**

**... and what comes next?**

- **Project Tour: Storymap**



## **Virtual Tour: Turtle Creek Connector Trail**

GAP Trail to Westmoreland Heritage Trail

[https://friendsoftheriverfront.org/trail\\_dev/turtle-creek-connector-trail/](https://friendsoftheriverfront.org/trail_dev/turtle-creek-connector-trail/)

# ● Project Tour: Storymap

## Tour the project segment by segment

**Overview Map**

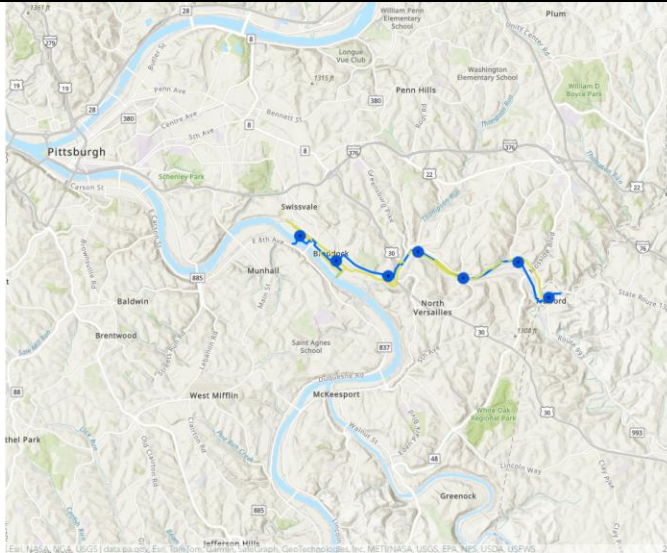
**LEGEND**

- PROPOSED ALIGNMENT
- ALTERNATE ALIGNMENT
- POTENTIAL TRAILHEAD

The Turtle Creek Connector is a bicycle and pedestrian route that will connect the Westmoreland Heritage Trail (WHT) in Trafford, PA to Carrie Furnace in Rankin, PA.

Rehabilitation of the Carrie Furnace Hot Metal Bridge is a separate project, but eventually the Turtle Creek Connector and the bridge will combine to connect Rankin, Braddock, Wall, North Braddock, East Pittsburgh, Turtle Creek, Wilmerding, Wall, Pitcairn, Trafford, Murrysville, and Export to the Great Allegheny Passage, Pittsburgh, and Washington, DC.

For more information about the history of the project and how we got to this point, see [https://friendsoftheriverfront.org/trail\\_dev/turtle-creek-connector-trail/](https://friendsoftheriverfront.org/trail_dev/turtle-creek-connector-trail/)



Tell us what you think!

### Turtle Creek Connector Trail Survey

1. How do you feel about the proposed route in Rankin, Braddock and North Braddock?

Strongly dislike Dislike Neutral Like it Love it

Would you like to say more about why you feel that way?





2. How do you feel about the proposed route in East Pittsburgh and Turtle Creek?

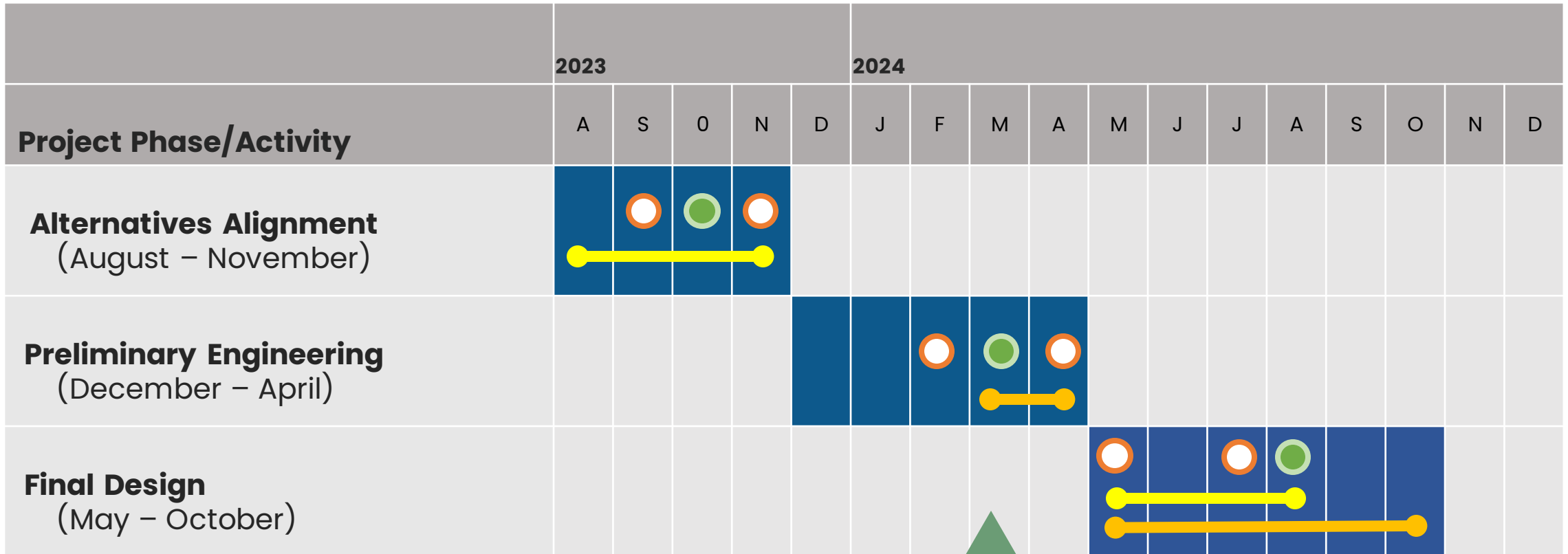
Strongly dislike Dislike Neutral Like it Love it

Would you like to say more about why you feel that way?

Find the Storymap here:  
[https://friendsoftheriverfront.org/trail\\_dev/turtle-creek-connector-trail/](https://friendsoftheriverfront.org/trail_dev/turtle-creek-connector-trail/)

# Public Outreach Timeline

-  Steering Committee
-  Public Meeting
-  Pop Up Events
-  Storymap Updates



**WE ARE  
HERE!**

# ● NOW

- **Alternatives analysis peer review**
- **Preliminary design and engineering**
- **Planning the full trail experience**
- **Talking to property owners, borough leaders, and other stakeholders**



# ● Trailheads and Access Points



# ● Trailheads and Access Points



# ● Wayfinding



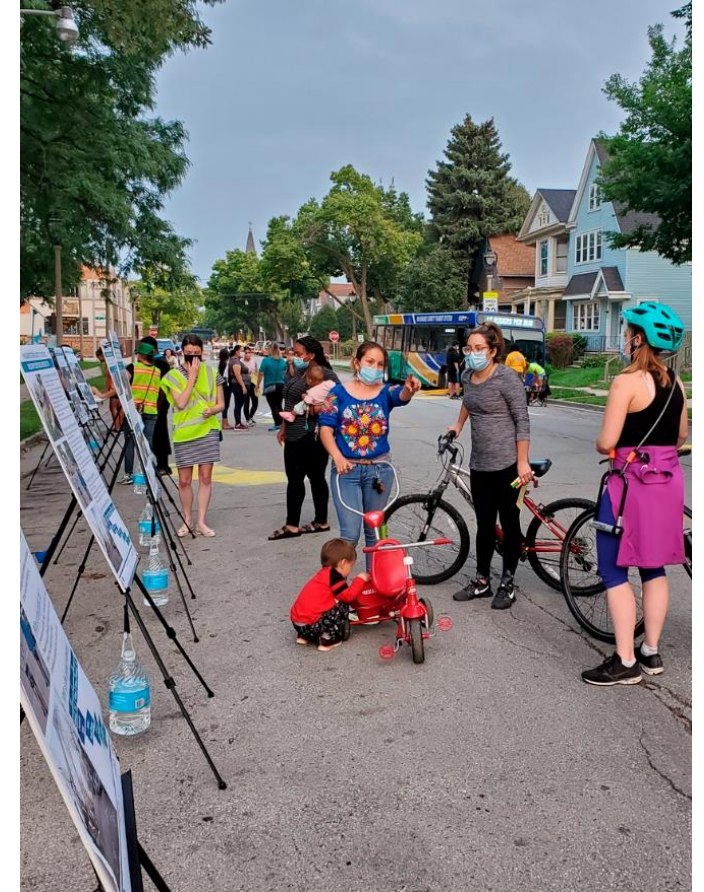


# ● Next Steps

## How you can help!

- Tell us what you think! What do you like about the proposed trail route? What don't you like?
- Where would you like to see trailheads, or focal points for meeting up and accessing the trail?
- What events do you have going on this summer that we can attend?

...Tell me later or grab my card!



# ● RESOURCES



**PROJECT WEBPAGE**



**FEASIBILITY STUDY**



**STORYMAP**



**Chris Corbran**

Pennsylvania Environmental Council (PEC)  
ccorbran@pecpa.org



**Courtney Mahronich Vita**

Friends of the Riverfront  
Courtney@FriendsOfTheRiverfront.org



**John Nicholson**

WSP USA Inc.  
john.nicholson@wsp.com



**Chad Smedley**

WSP USA Inc.  
chad.smedley@wsp.com



**Kristin Saunders**

Toole Design Group  
KSaunders@TooleDesign.com