

# Hazelwood to Carrie Furnace Trail Segment

## Three Rivers Heritage Trail

**Public Meeting**

August 19, 2025





Build safe, clean, and accessible riverfront trails as part of the  
**Three Rivers Heritage & Three Rivers Water Trail** systems  
to create and maintain an outstanding experience for  
trail users while providing economic, environmental,  
and health benefits to the Pittsburgh region.

# Project Funding

Funding for this project was provided by the Redevelopment Authority of Allegheny County (RAAC)'s **Trail Development Fund**, which was made possible via the passage of the American Rescue Plan Act (ARPA) in 2021.



# Steering Committee

Ann Ogoreuc, Allegheny County Economic Development

Erin Deasy, Allegheny County Economic Development

Jaclyn Karolski, Allegheny County Economic Development

Katie Wettick, City of Pittsburgh, DOMI

Austin Herzog, City of Pittsburgh, Planning

Joelisa McDonald, Rankin Borough

Deneen Swartzwelder, Swissvale Borough

Molly Levine, Office of Senator Jay Costa

Seth Davis, Pittsburgh Regional Transit

Craig Toocheck, Pittsburgh Regional Transit

Lauren Courey, Hazelwood Initiative

Tiffany Taulton, Hazelwood resident

Ron Baraff, Rivers of Steel

Seth Bush, BikePGH

Gavin White, Riverlife

Christopher Sandvig, Mobilify

## **Consultant Team**

TPD (lead), Larson Design Group,  
NorthEast Track Solutions, and  
American Geotechnical & Environmental Services







### Duck Hollow Trail

*This trail segment is in a natural setting along the river and is currently disconnected from the Three Rivers Heritage Trail network*

Hazelwood Green

Replace Melanchton Street bridge with accessible bike/ped bridge

Duck Hollow Trail (existing)

Rankin Hot (future bike/ to Great Alle

Bike/Ped Bridge Crossing to Duck Hollow Trail (across railroad tracks)

Hazelwood to Carrie Furnace Trail Segment  
**PROJECT LOCATION**



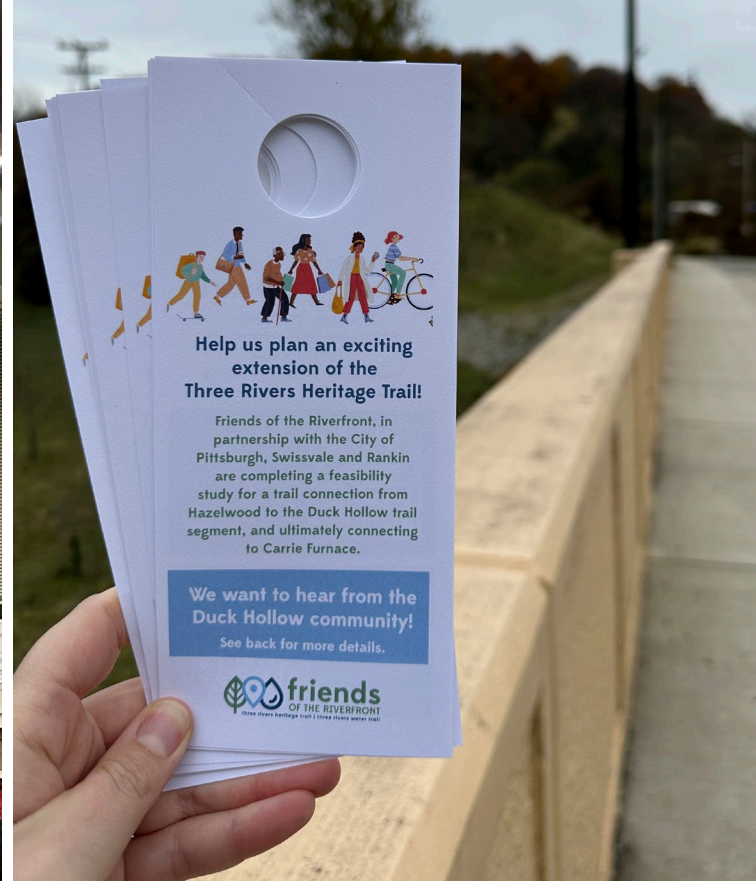
# Public Engagement Rankin Community Day



friends  
OF THE RIVERFRONT

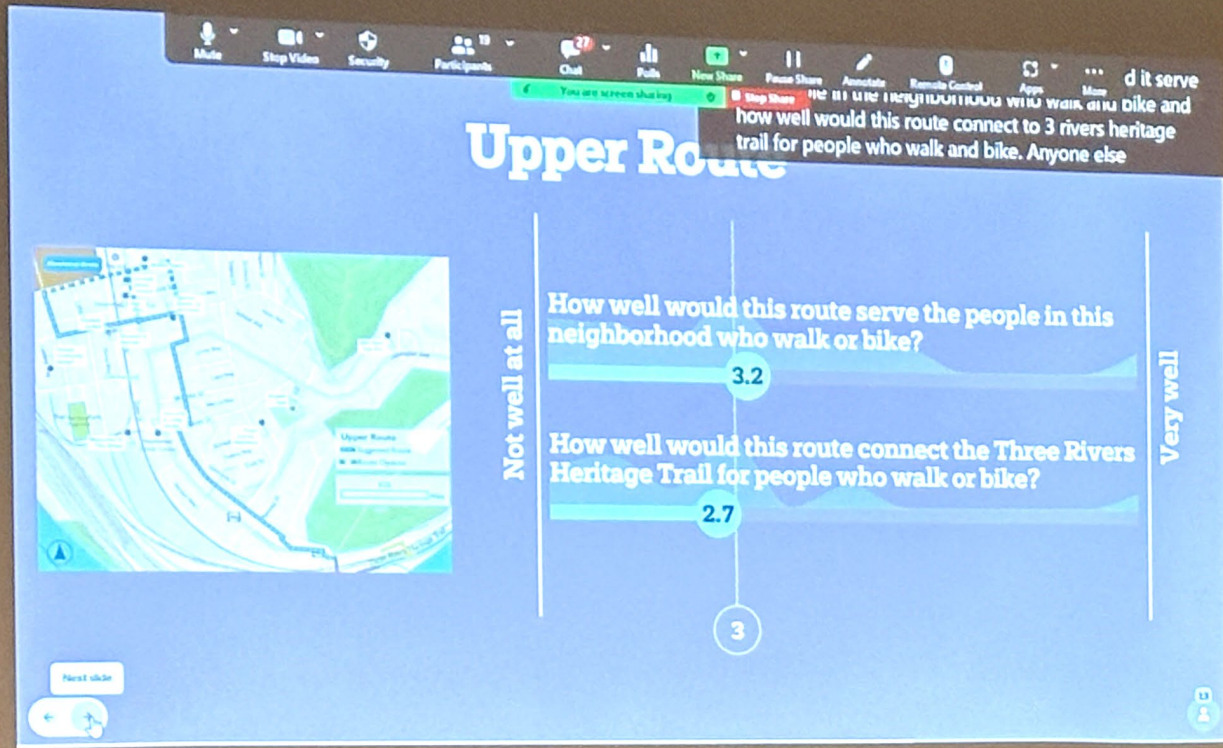


Public Engagement  
**FALL 2023**





# Public Engagement PUBLIC MEETING #1

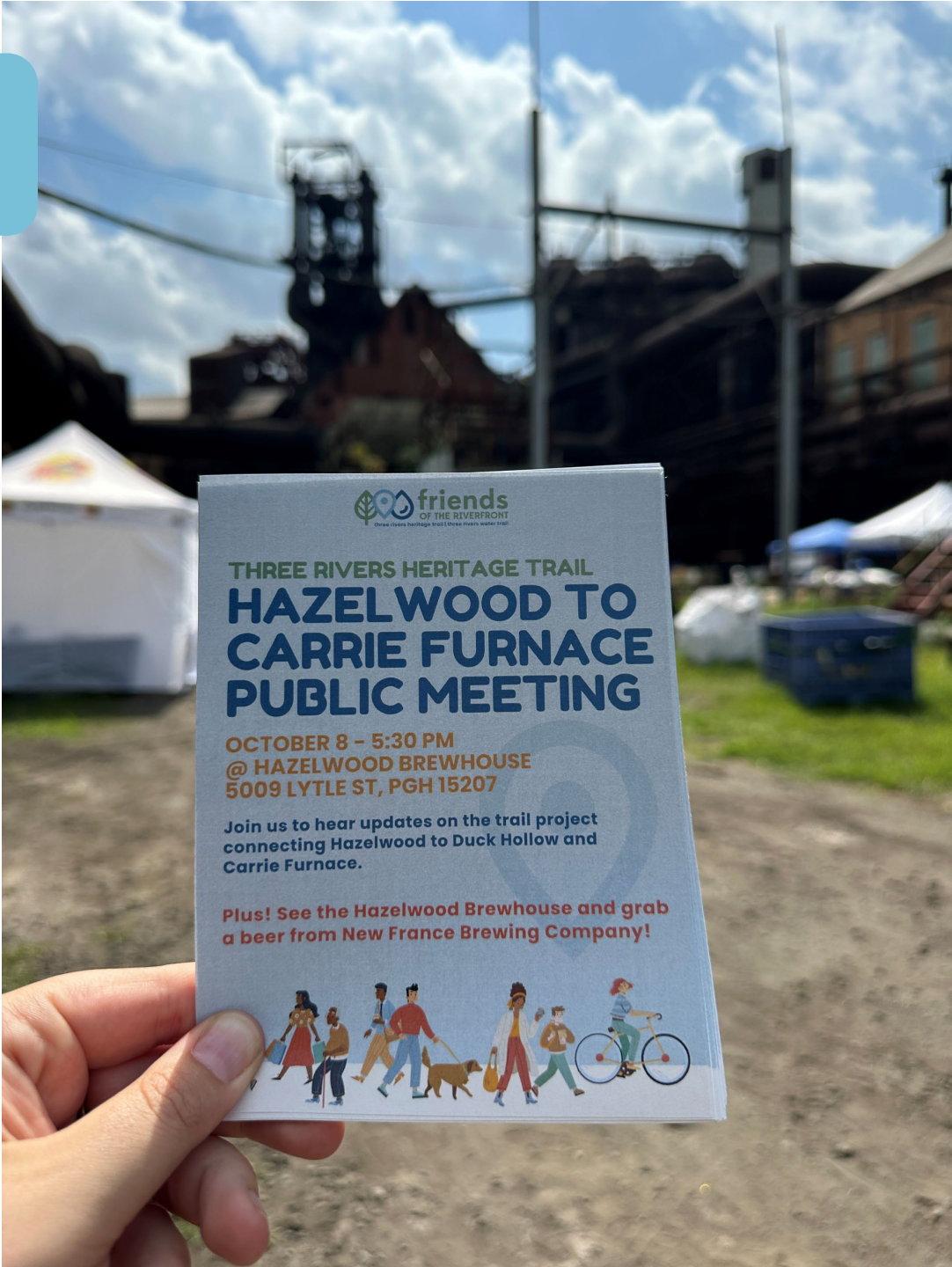


40+  
meeting  
attendees



Public Engagement

# Rankin Community Day



 friends  
OF THE RIVERFRONT  
three rivers heritage trail | three rivers water trail

**THREE RIVERS HERITAGE TRAIL**  
**HAZELWOOD TO**  
**CARRIE FURNACE**  
**PUBLIC MEETING**

**OCTOBER 8 - 5:30 PM**  
**@ HAZELWOOD BREWHOUSE**  
**5009 LYTLE ST, PGH 15207**

Join us to hear updates on the trail project  
connecting Hazelwood to Duck Hollow and  
Carrie Furnace.

Plus! See the Hazelwood Brewhouse and grab  
a beer from New France Brewing Company!





Public Engagement

# PUBLIC MEETING #2



friends  
OF THE RIVERFRONT





Public Engagement

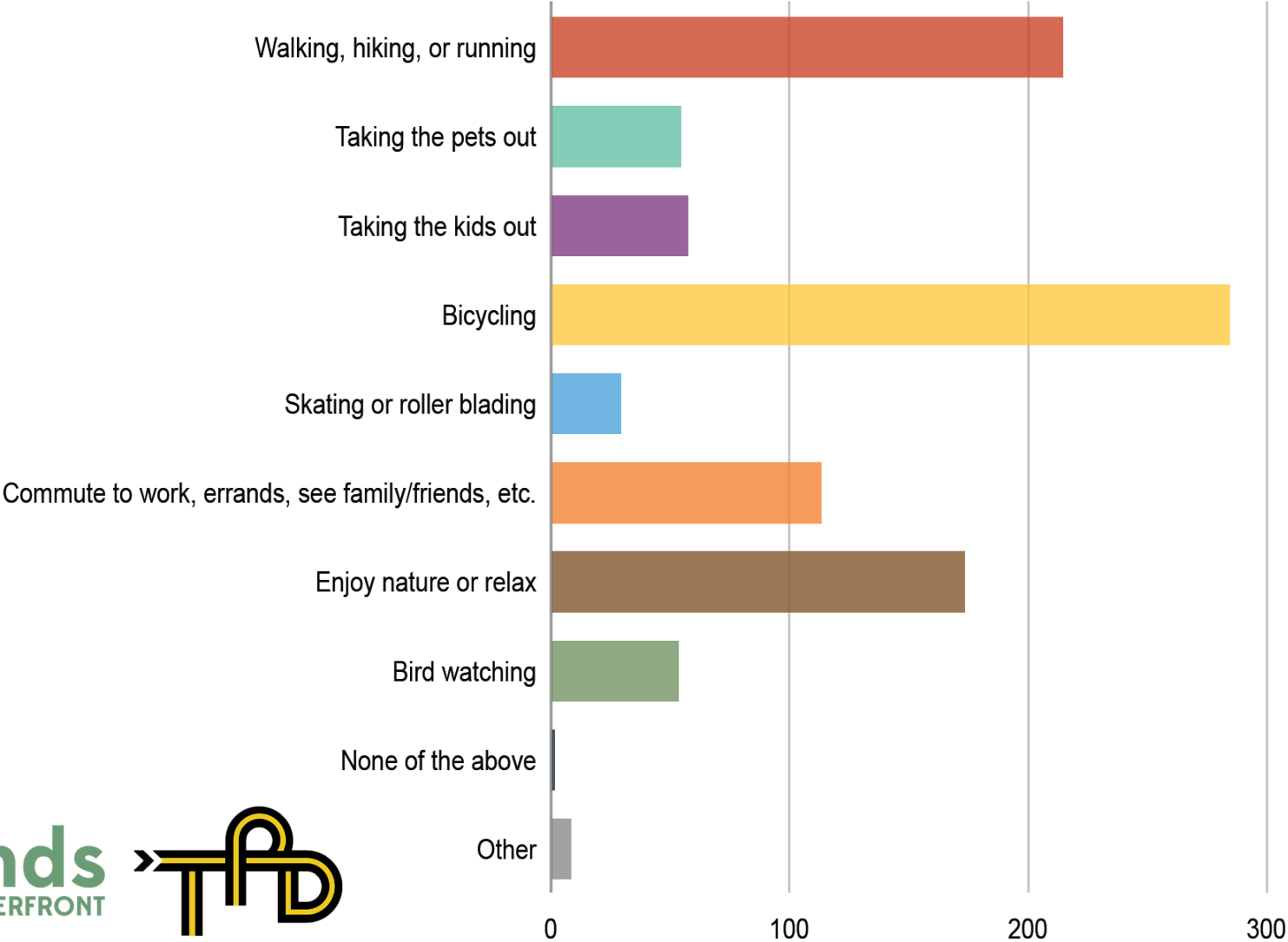
# PUBLIC MEETING #2





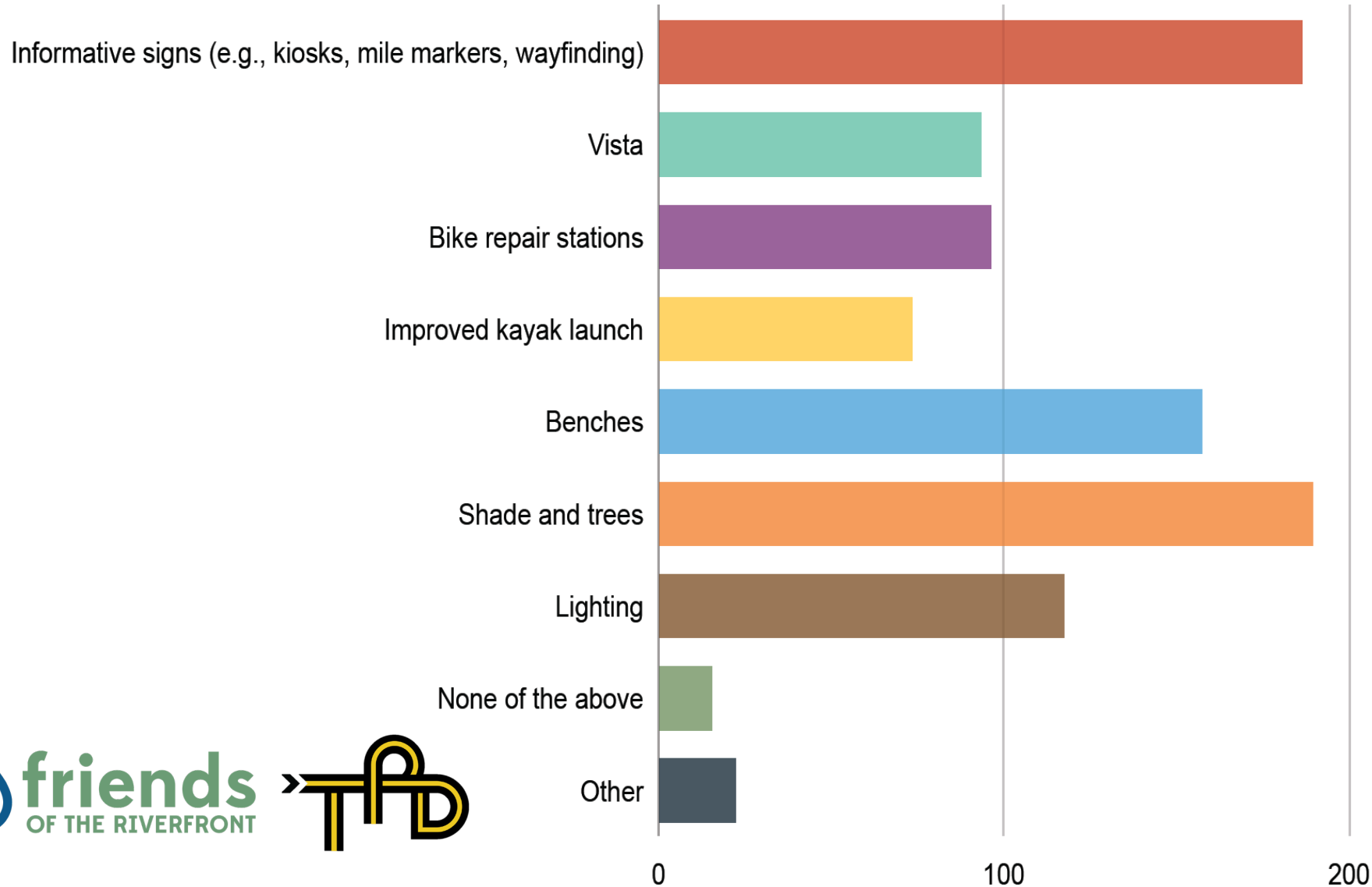
Community Survey

# HOW WOULD YOU USE THE TRAIL?



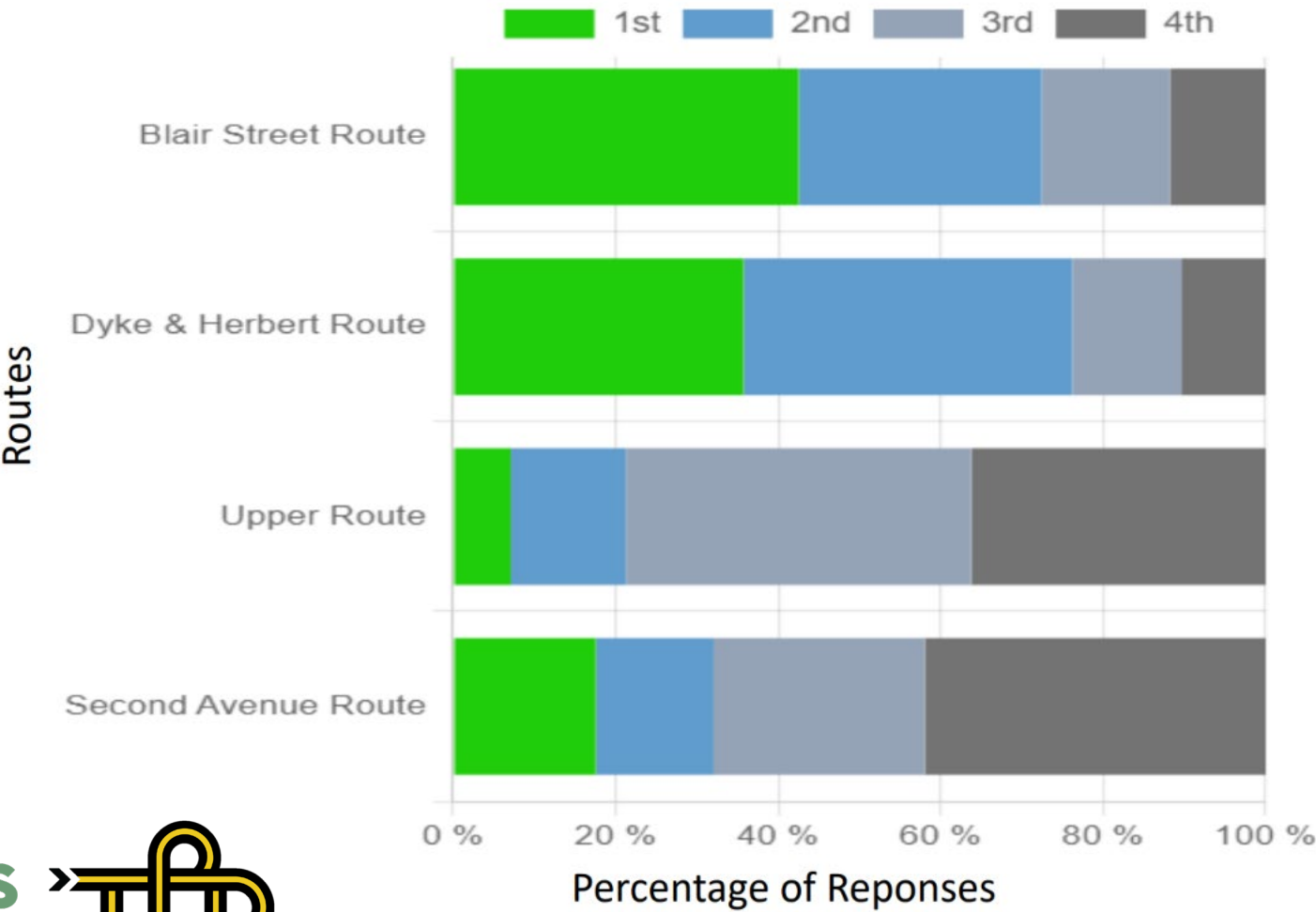


# WHAT WOULD YOU LIKE TO SEE?



Community Survey

# WHICH ROUTE?





# Blair Street FINAL ROUTE

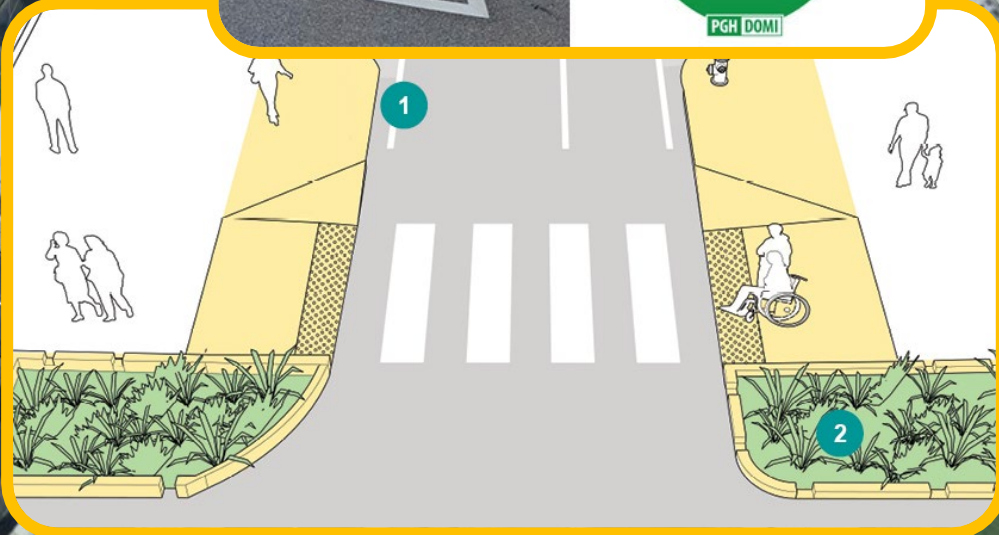
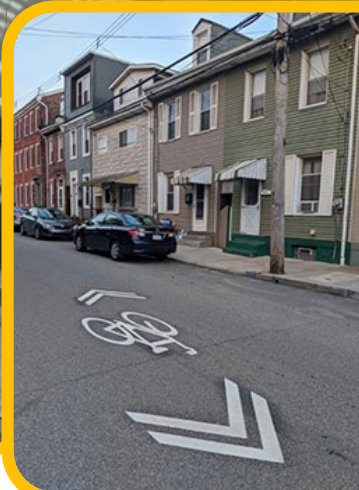
RED-USE FACILITY



BLAIR ST

W ELIZABETH ST

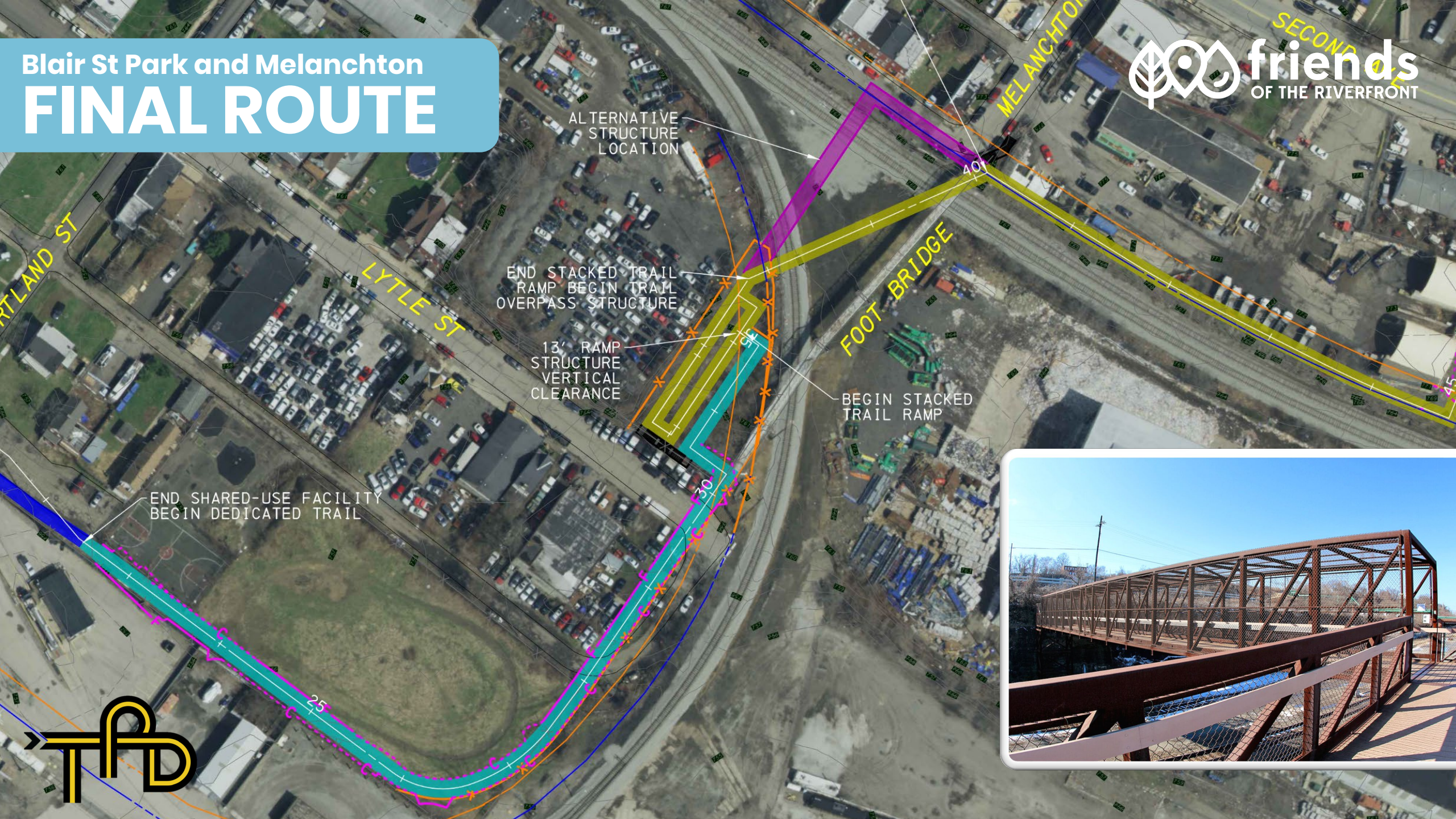
15



Example from NACTO



Blair St Park and Melanchton  
**FINAL ROUTE**





Blair St Park and Melanchton

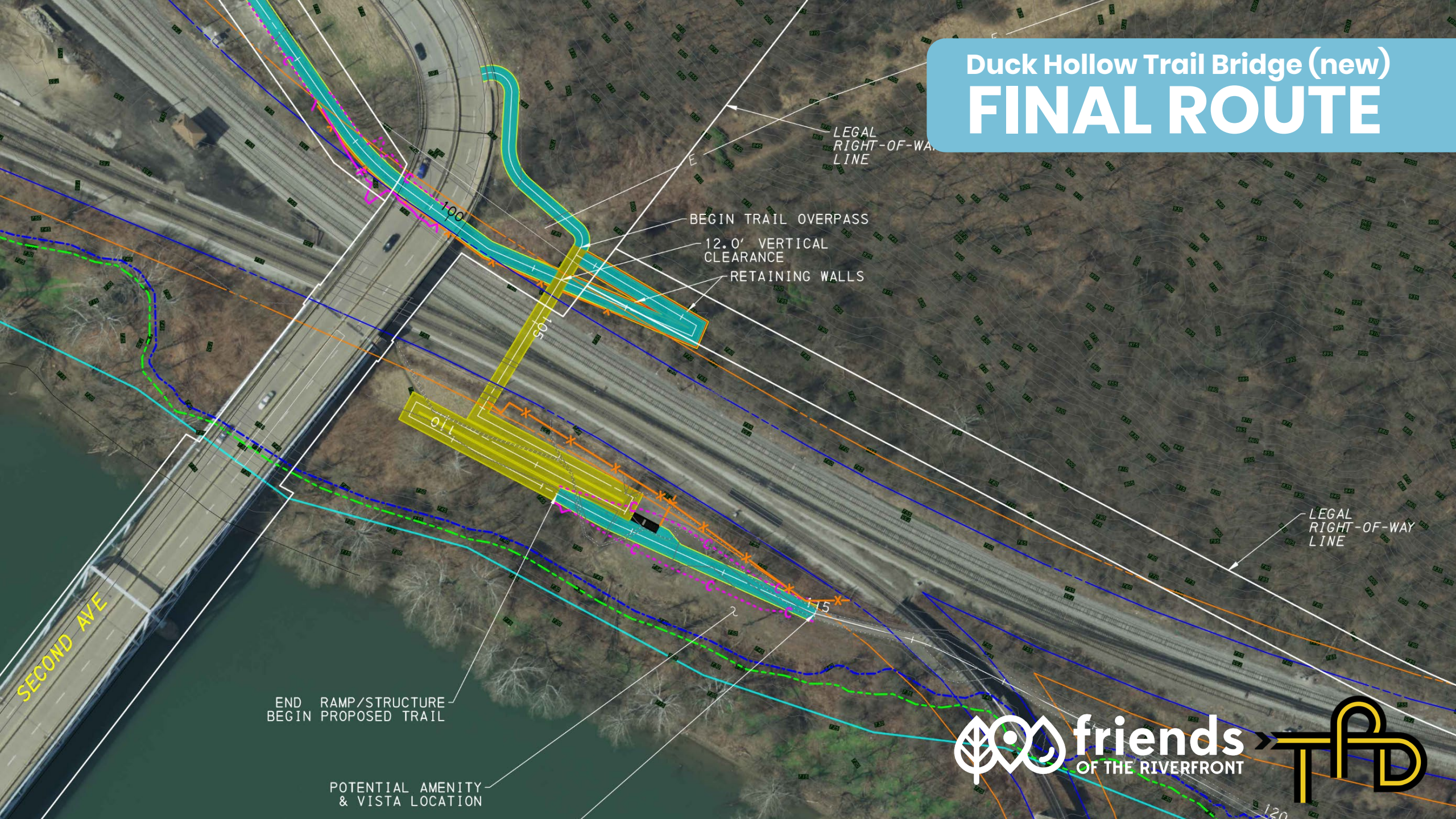
# FINAL ROUTE



12' Paved Path Between Yard and Park



# Duck Hollow Trail Bridge (new) **FINAL ROUTE**



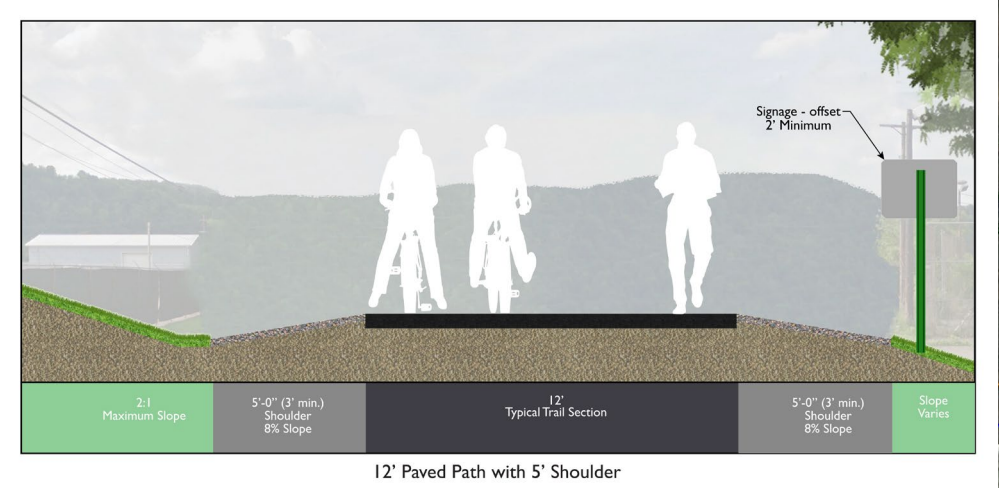
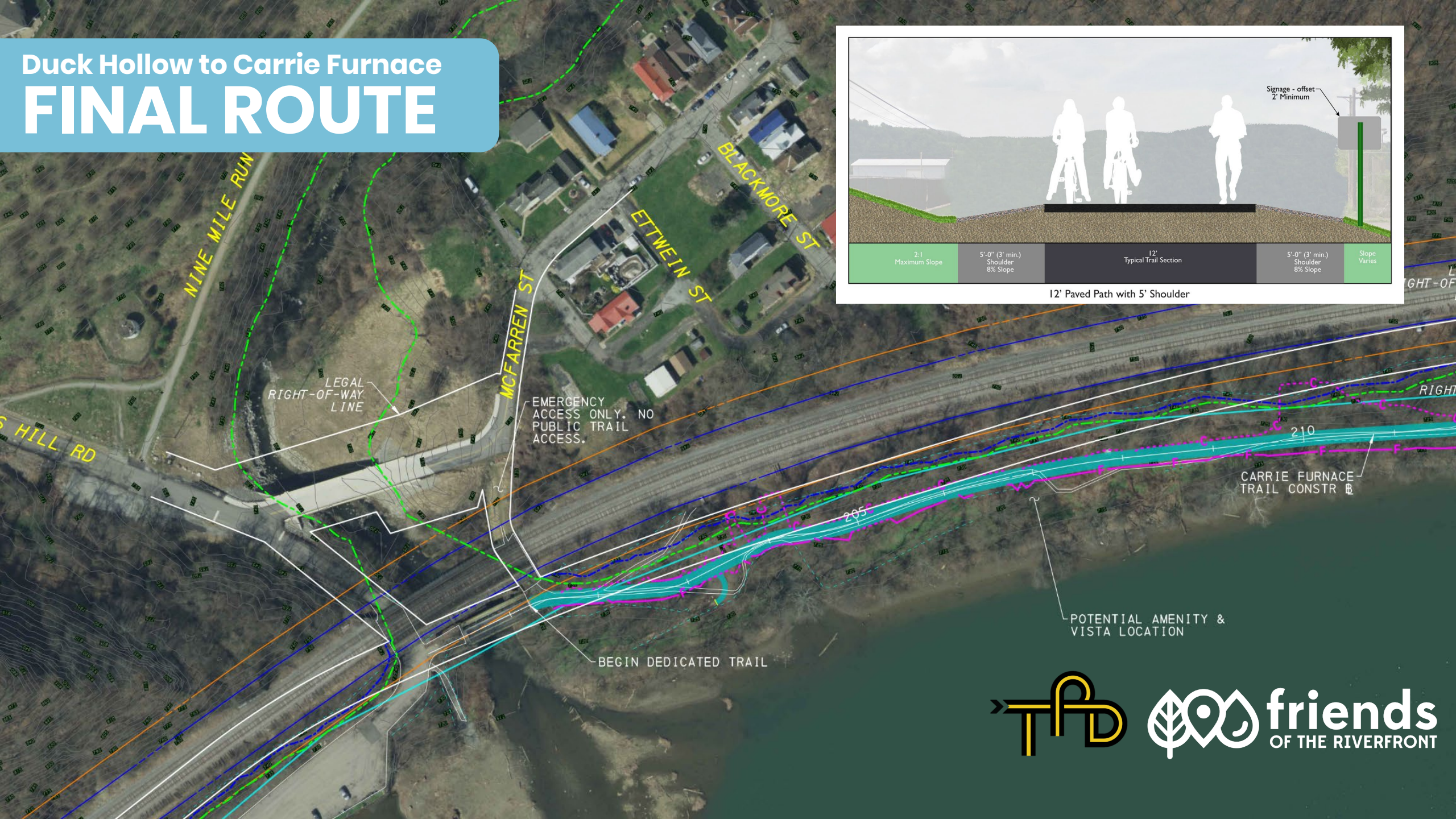


# Proposed Duck Hollow TRAIL BRIDGE





# Duck Hollow to Carrie Furnace FINAL ROUTE



friends  
OF THE RIVERFRONT



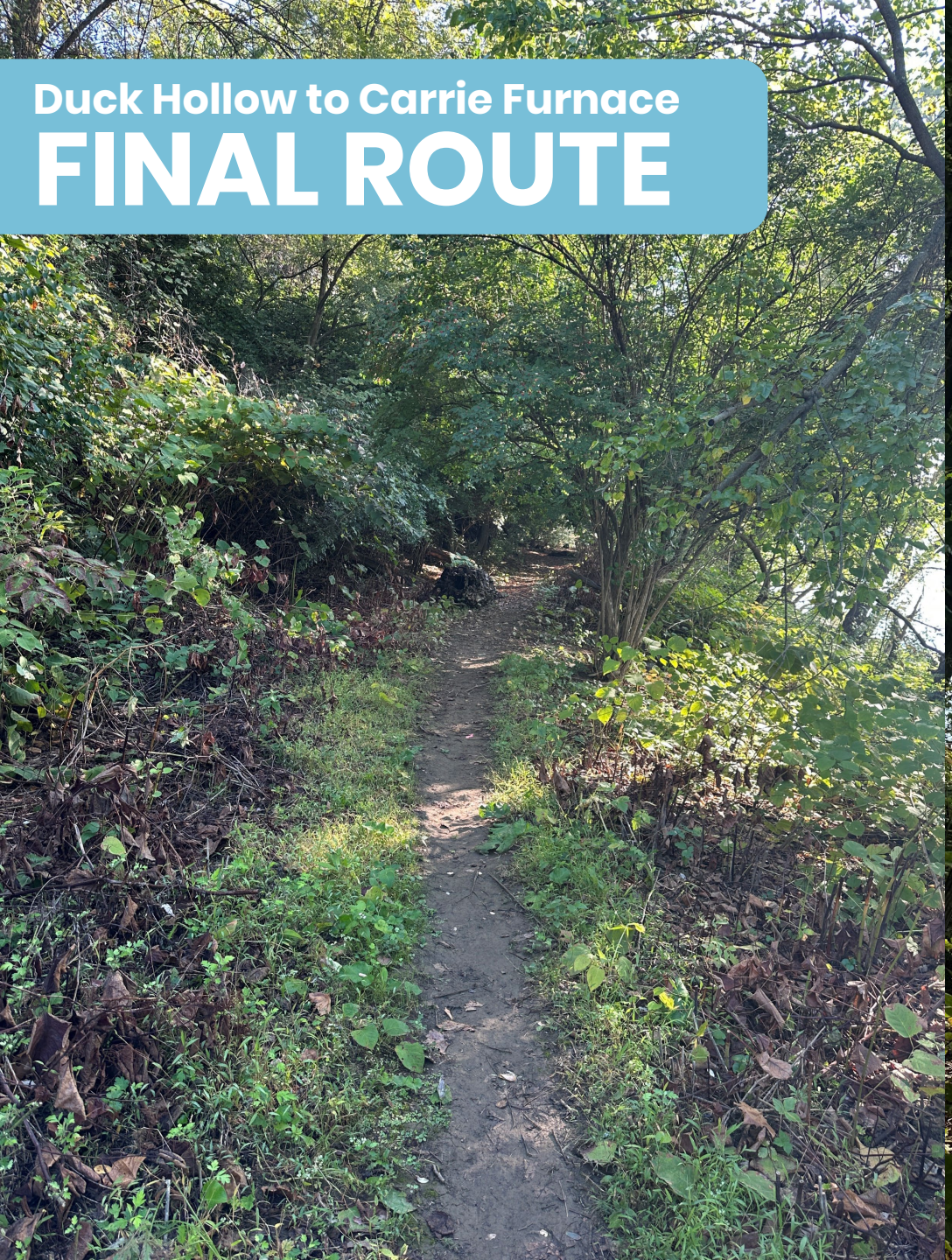
Duck Hollow to Carrie Furnace

# FINAL ROUTE



**friends**  
OF THE RIVERFRONT





Duck Hollow to Carrie Furnace  
**FINAL ROUTE**



**friends**  
OF THE RIVERFRONT



# Costs FINAL ROUTE



Location	Cost
<b>Section #1 Hazelwood to Glenwood Bridge (1.0 Mile)</b>	
Total Estimate for Construction	\$10,315,364.28
Total for Survey and Engineering	\$3,217,774.46
Total for Utility Relocation - Estimated Cost	\$16,9000.00
Est. Project Cost (Including Utility Poles, Engineering, and Inspection)	\$13,550,038.73
<b>Section #2 Glenwood Bridge to Duck Hollow (1.5 Mile)</b>	
Total Estimate for Construction	\$11,425,435.86
Total for Survey and Engineering	\$43,489,186.88
Total for Utility Relocation - Estimated Cost	\$60,000.00
Est. Project Cost (Including Utility Poles, Engineering, and Inspection)	\$14,974,622.74
<b>Section #3 Duck Hollow to Carrie Furnance (1.5 Mile)</b>	
Total Estimate for Construction	\$2,375,103.95
Total for Survey and Engineering	\$662,963.80
Total for Utility Relocation - Estimated Cost	-
Est. Project Cost (Including Utility Poles, Engineering, and Inspection)	\$3,038,067.75
<b>Overall</b>	
Total Estimate for Construction	\$24,115,904.07
Total for Survey and Engineering	\$7,369,925.14
Total for Utility Relocation - Estimated Cost	\$76,900.00
Est. Project Cost (Including Utility Poles, Engineering, and Inspection)	\$31,562,729.21



# CURRENT FUNDRAISING

## DUCK HOLLOW EXTENSION

- DCED Multimodal Transportation Fund (MTF)
- Gaming and Economic Development Tourism Fund (GEDTF)

## DUCK HOLLOW TRAIL BRIDGE

- SPC Transportation Alternatives Set-Aside (TASA)
- PennDOT Transportation Alternatives Set-Aside (TASA)\*
- PennDOT Multimodal Transportation Fund (MTF)\*

*\*tentative*



# Collaboration CSX SITE VISIT





# Timeline & **SCHEDULE**



- PROJECT KICKOFF
- ALTERNATIVES ANALYSIS
- PUBLIC MEETING #1, TWO (2) COMMUNITY SURVEYS (NOV 2023)
- FINALIZE BLAIR STREET ROUTE, LANDOWNER COORDINATION
- ATIIP GRANT APPLICATION (IN PARTNERSHIP WITH CITY)
- LAND SURVEY, STRUCTURE DESIGN, PLAN DEVELOPMENT
- RAILROAD COORDINATION (ONGOING)
- PUBLIC MEETING #2 (OCT 2024)
- TRAIL PLANS & COST ESTIMATES
- PUBLIC MEETING #3 (SUMMER 2025)
- FINAL STUDY DOCUMENT

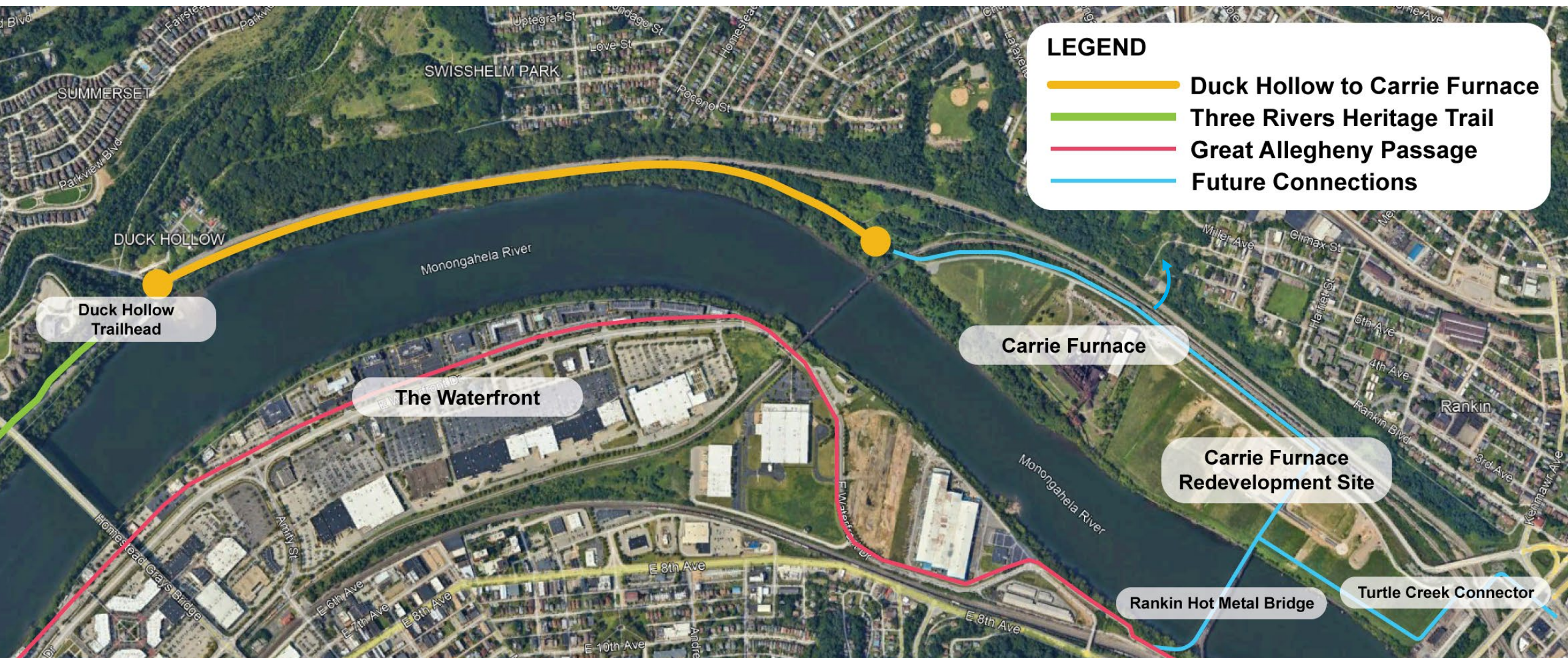
**WE ARE HERE!**



# HOW TO SUPPORT

- Sign the project pledge
- Reach out to your elected officials
- Sign up for our newsletter for updates
- Project pages (Engage and FOR)







**Tuesday, September 9**

## **TURTLE CREEK CONNECTOR PUBLIC MEETING**

**>> IN-PERSON**

**The Turtle Creek Connector** is a planned 9-mile bicycle and pedestrian route connecting the Carrie Furnace with the Westmoreland Heritage Trail.



Join us for an informational session to explore detailed plans and drawings of the Connector's current development. There are two opportunities to learn more. Both sessions will cover the same information, so please attend the one that works best for you!

### **IN PERSON**

**Carnegie One Braddock**  
(Braddock Carnegie Library)  
419 Library Street  
Braddock, PA 15104

Tuesday, September 9th  
6:00 - 7:30 PM

### **VIRTUAL**

**Zoom Meeting**  
Wednesday,  
September 10th  
6:00 - 7:30 PM



Scan the QR code below to learn more and register for the virtual event!

**Wednesday, September 10**

## **TURTLE CREEK CONNECTOR PUBLIC MEETING**

**>> VIRTUAL**

**The Turtle Creek Connector** is a planned 9-mile bicycle and pedestrian route connecting the Carrie Furnace with the Westmoreland Heritage Trail.



Join us for an informational session to explore detailed plans and drawings of the Connector's current development. There are two opportunities to learn more. Both sessions will cover the same information, so please attend the one that works best for you!

### **IN PERSON**

**Carnegie One Braddock**  
(Braddock Carnegie Library)  
419 Library Street  
Braddock, PA 15104

Tuesday, September 9th  
6:00 - 7:30 PM

### **VIRTUAL**

**Zoom Meeting**  
Wednesday,  
September 10th  
6:00 - 7:30 PM



Scan the QR code below to learn more and register for the virtual event!





*Trough side with person for perspective, looking north towards Carrie Furnace Site. Trough has graffiti on it.*



**RANKIN HOT  
METAL BRIDGE**



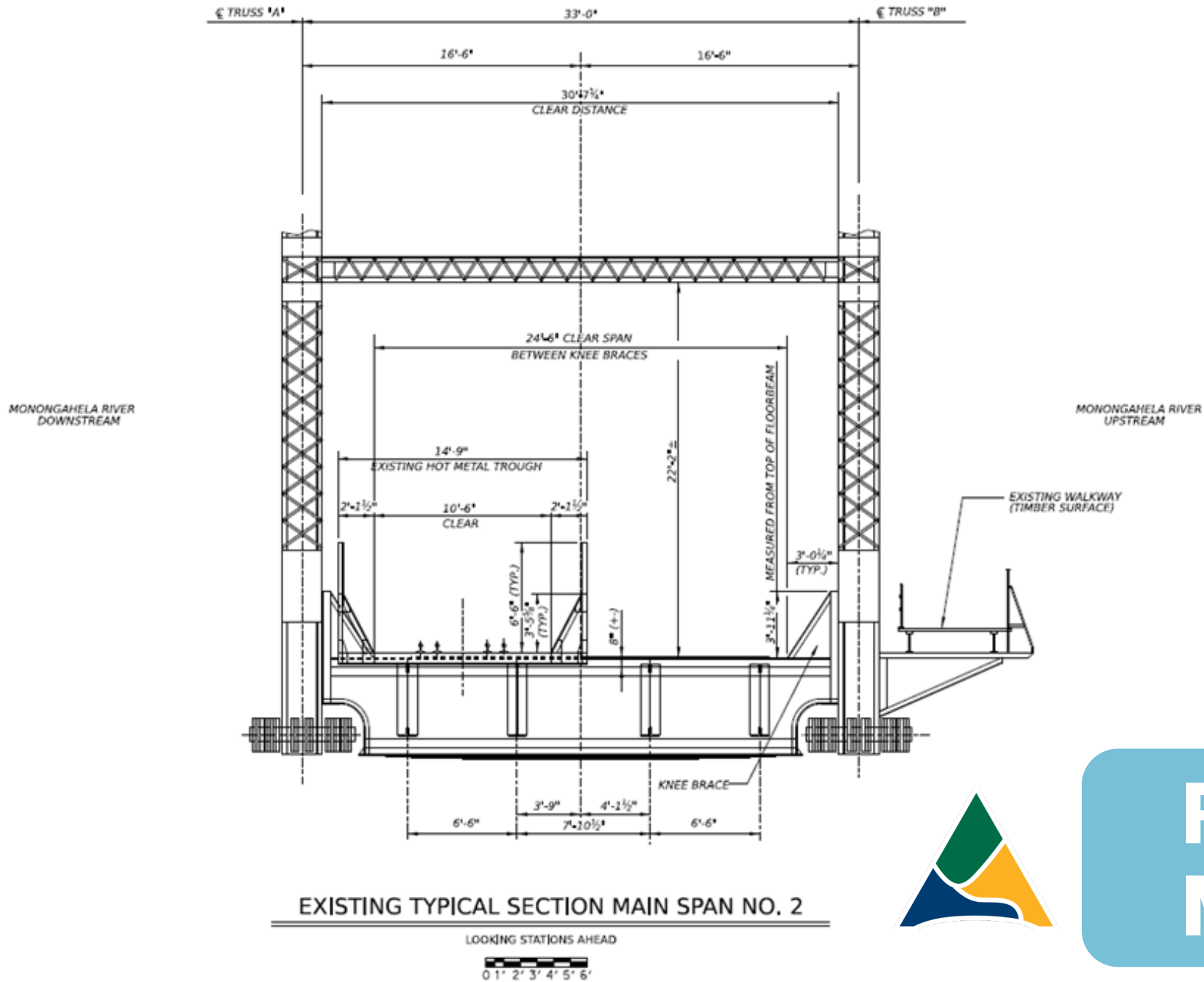


Commerce side without a  
trough, looking north  
towards Carrie Furnace Site.



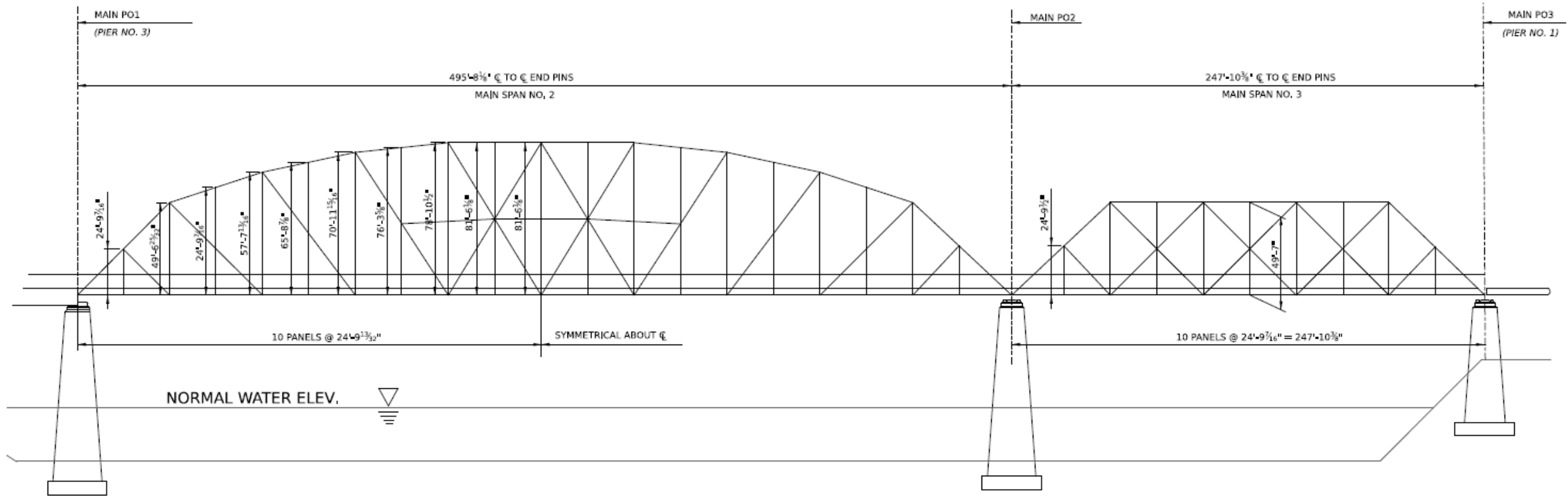
**RANKIN HOT  
METAL BRIDGE**



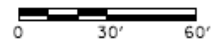


# RANKIN HOT METAL BRIDGE





ELEVATION - CARRIE FURNACE HOT METAL BRIDGE (TRUSS SPANS)



**RANKIN HOT  
METAL BRIDGE**



# Thank you!

